

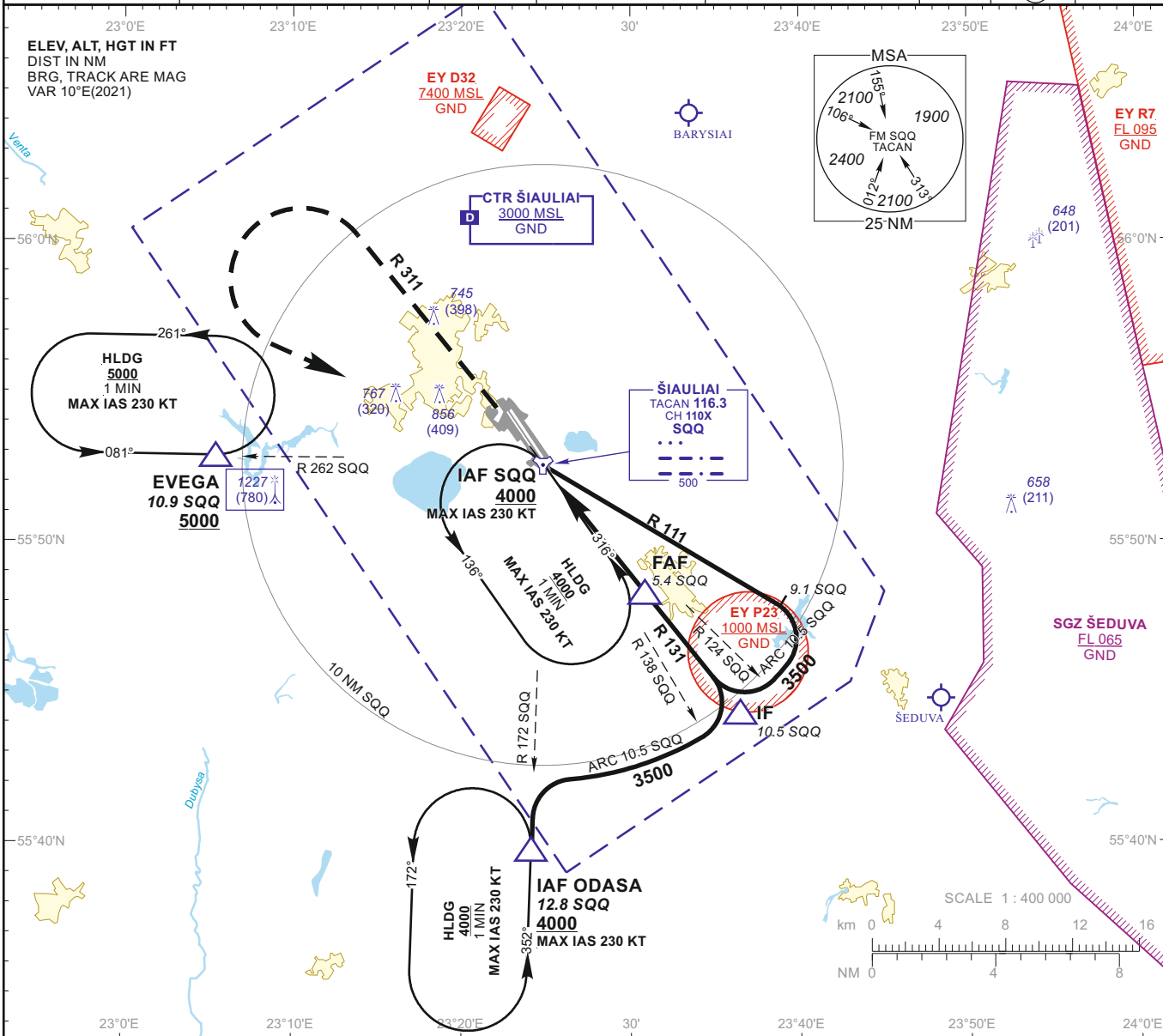
**INSTRUMENT APPROACH CHART**  
for MILITARY ACFT  
TRANSITION LEVEL By ATC  
TRANSITION ALT **5000(4553)**

**AERODROME ELEV 447**  
HEIGHTS RELATED TO AD ELEV  
THR RWY 32R - ELEV 441

TWR 120.405  
ATIS 120.755

**ŠIAULIAI (EYSA)**  
**TACAN**  
**RWY 32R (MIL)**

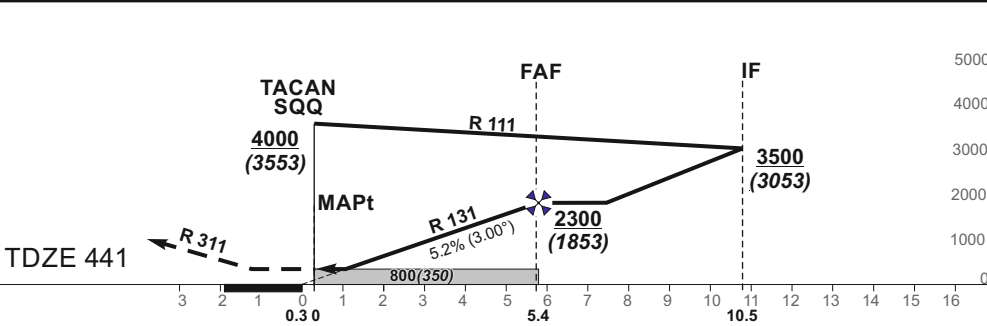
TACAN SQQ CH110X	APP COURSE 311°	FAF ALT 2300	Descent GP 5.2% (3.00°)	MDA 800	TDZE 441	ALS (BP)	LDA 11483
---------------------	--------------------	-----------------	----------------------------	---------	-------------	-------------	--------------



**MISSED APPROACH**

Climb via SQQ, then on R 311 to 2100, then turn left with MIN bank angle 20° (MAX IAS 230 KT) to SQQ climbing to 4000.

Remarks:  
Timing not authorized for defining the MAPt.



GS	Kts	80	100	120	140	160	180	DIST SQQ	5	4	3	2	1
FAF - MAPt 5.4 NM	min:sec	4:03	3:14	2:42	2:19	2:02	1:48	Altitude	2170	1850	1540	1220	910
Rate of descent (5.2%)	ft/min	415	520	625	730	835	940	Height	(1723)	(1403)	(1093)	(773)	(463)

	STRAIGHT-IN APPROACH			CIRCLING APPROACH				
	TACAN		ALS out	MDA(H)	Visibility			
	MDA(H)	Full						
A	800 (350)	RVR 1500m	RVR 2400m	880 (440)	1500m	A		
B				1160 (710)	2400m	B		
C				RVR 1700m	RVR 2600m	1260 (810)	3600m	C
D						1350 (910)	4300m	D
E								

INSTRUMENT APPROACH CHART  
for MILITARY ACFT  
TRANSITION LEVEL By ATC  
TRANSITION ALT **5000(4553)**

**AERODROME ELEV 447**  
HEIGHTS RELATED TO AD ELEV  
THR RWY 32R - ELEV 441

**ŠIAULIAI (EYSA)**  
**TACAN**  
**RWY 32R (MIL)**

TABULAR DESCRIPTION

TACAN INSTRUMENT APPROACH for MILITARY ACFT from IAFs (SQQ, ODASA)		
FIX/POINTS	COORDINATES	FIX FORMATION
EVEGA (HLDG)	55 52.87N 023 05.45E	BRG 082.01° / 10.91 NM SQQ
ODASA (IAF)	56 07.72N 023 24.76E	BRG 351.79° / 12.80 NM SQQ
SQQ TACAN (IAF)	55 52.54N 023 24.81E	
IF	55 44.36N 023 36.45E	BRG 311.37° / 10.50 NM SQQ
FAF	55 48.32N 023 30.83E	BRG 311.37° / 5.43 NM SQQ
MAPt	55 52.54N 023 24.81E	
THR RWY 32R	55 52.85N 023 24.64E	
Final approach descent angle: 3.00°		