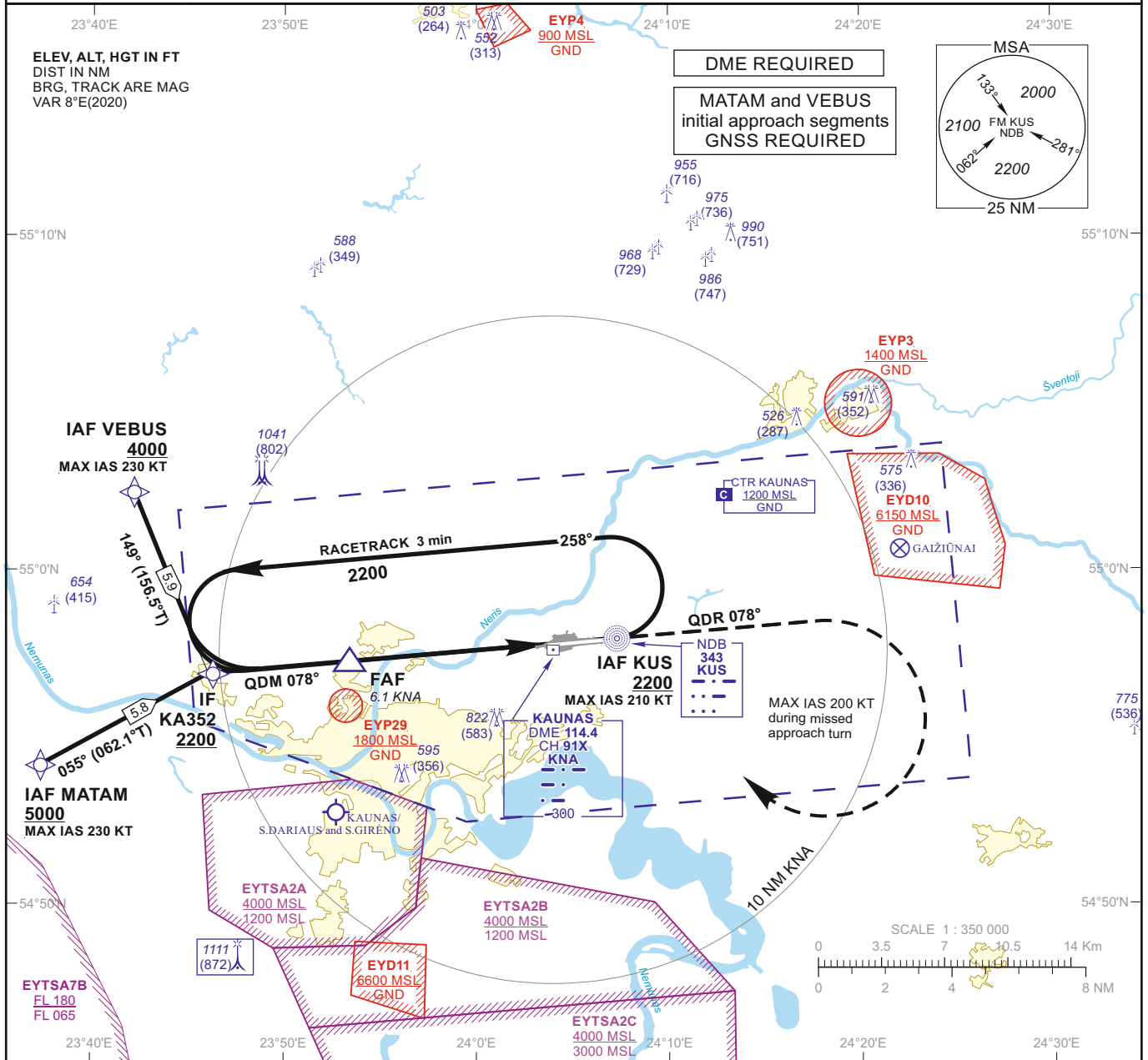


INSTRUMENT APPROACH CHART - ICAO

AERODROME ELEV 259
 HEIGHTS RELATED TO DTHR RWY 08 - ELEV 239

TWR 124.205
 ATIS 129.055

KAUNAS (EYKA) NDB Y RWY 08 (CAT C/D)



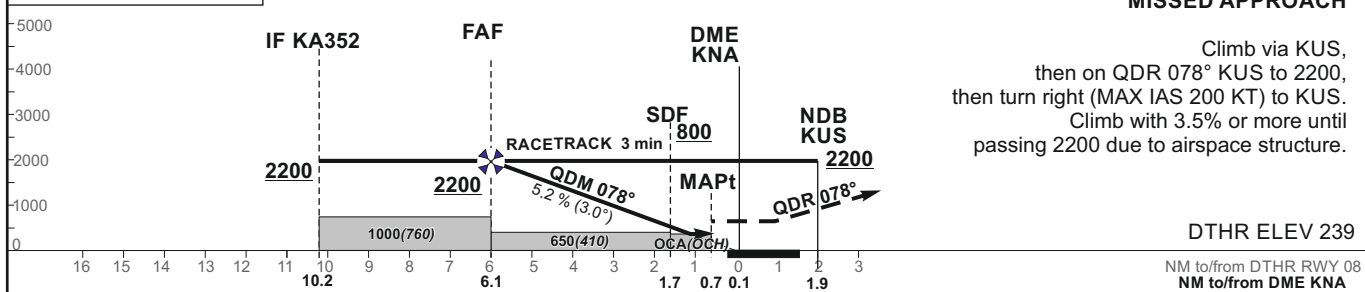
TRANSITION ALT 5000

MISSED APPROACH

Climb via KUS, then on QDR 078° KUS to 2200, then turn right (MAX IAS 200 KT) to KUS. Climb with 3.5% or more until passing 2200 due to airspace structure.

DTHR ELEV 239

NM to/from DTHR RWY 08
 NM to/from DME KNA



OCA(OCH)	C	D	DIST DME KNA								
			5	4	3	2					
STRAIGHT-IN APPROACH	NDB	640 (400)	Altitude	1850	1530	1220	900				
	NDB (when SDF not received)	650 (410)	Height	(1611)	(1291)	(981)	(661)				
CIRCLING	1230 (970)	not authorized	Timing not authorized for defining the MAPt								
			GS	Kts	80	100	120	140	160	180	
			FAF - MAPt	5.4 NM	min:sec	4:03	3:14	2:42	2:19	2:02	1:48
			Rate of descent (5.2%)	ft/min	415	520	625	730	835	940	

For data tabulation see verso

Changes: EYP37 and EYP38 withdrawn; OCA(H); SDF and MAPt position; obstacles; scale.

INSTRUMENT
APPROACH
CHART - ICAO

AERODROME ELEV 259
HEIGHTS RELATED TO
DTHR RWY 08 - ELEV 239

KAUNAS (EYKA)
NDB Y RWY 08
(CAT C/D)

TABULAR DESCRIPTION

IAF MATAM, INITIAL APPROACH

Serial Number	Path Descriptor	Waypoint Identifier	Fly-over	Course/Track °M(°T)	Magnetic Variation	Distance (NM)/ Time	Turn Direction	Altitude (FT)/ Flight level	Speed (KT)	VPA/TCH	Navigation Specification
001	IF	MATAM	—	—	7.5	—	—	+5000	-230	—	RNAV 1
002	TF	KA352	—	055(062.1)	7.5	5.8	—	+2200	—	—	RNAV 1

IAF VEBUS, INITIAL APPROACH

Serial Number	Path Descriptor	Waypoint Identifier	Fly-over	Course/Track °M(°T)	Magnetic Variation	Distance (NM)/ Time	Turn Direction	Altitude (FT)/ Flight level	Speed (KT)	VPA/TCH	Navigation Specification
001	IF	VEBUS	—	—	7.5	—	—	+4000	-230	—	RNAV 1
002	TF	KA352	—	149(156.5)	7.5	5.9	—	+2200	—	—	RNAV 1

NDB INSTRUMENT APPROACH from IAFs(KUS, MATAM, VEBUS)

FIX/POINTS	COORDINATES	FIX FORMATION
MATAM (IAF)	54 54 08.9N 023 37 22.7E	BRG 070.25° KUS / 15.74 NM KNA
VEBUS (IAF)	55 02 19.2N 023 42 11.7E	BRG 099.50° KUS / 13.40 NM KNA
KUS (IAF)	54 57 56.6N 024 07 18.7E	1.94 NM KNA
KA352 (IF)	54 56 52.8N 023 46 18.3E	BRG 077.59° KUS / 10.22 NM KNA
FAF	54 57 14.9N 023 53 23.4E	BRG 077.61° KUS / 6.12 NM KNA
SDF	54 57 38.1N 024 01 03.0E	BRG 077.61° KUS / 1.69 NM KNA
MAPt	54 57 43.3N 024 02 48.7E	BRG 077.61° KUS / 0.68 NM KNA
DTHR RWY 08	54 57 46.44N 024 03 50.94E	
KNA	54 57 37.4N 024 03 59.1E	

Final approach descent angle: 3.00°