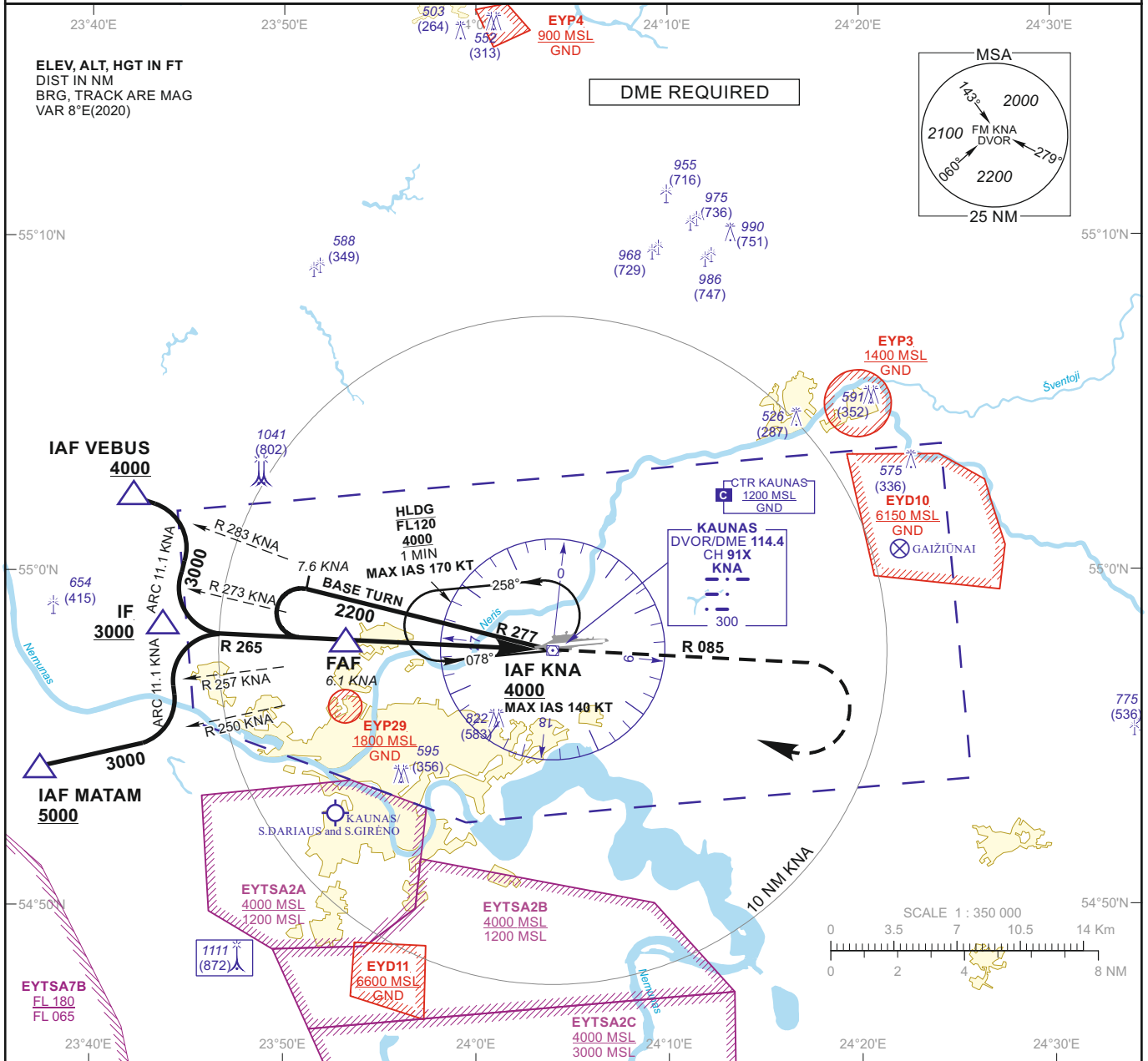


**INSTRUMENT
APPROACH
CHART - ICAO**

AERODROME ELEV 259
HEIGHTS RELATED TO
DTHR RWY 08 - ELEV 239

TWR 124.205
118.505
ATIS 129.055

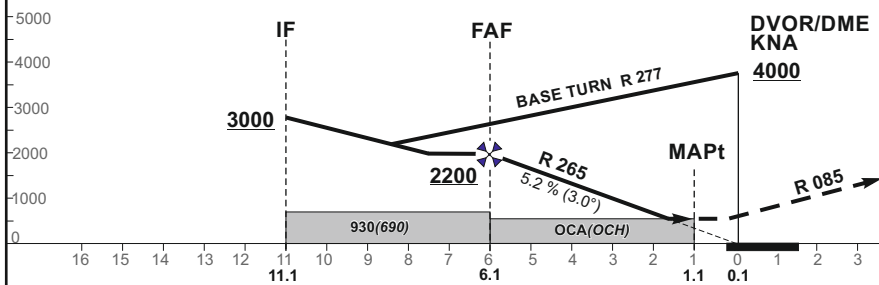
**KAUNAS (EYKA)
VOR Z RWY 08
(CAT A/B)**



TRANSITION ALT 5000

MISSED APPROACH

Climb via KNA, then on R 085 to 2200, then turn right to KNA climbing to 4000. Climb with 3.5% or more until passing 2200 due to airspace structure.



OCA(OCH)	STRAIGHT-IN APPROACH	A		B		DIST DME KNA							
		780 (540)		730 (470)	760 (500)	5	4	3	2				
	VOR					Altitude	1850	1530	1220	900			
						Height	(1611)	(1291)	(981)	(661)			
	CIRCLING					Timing not authorized for defining the MAPt							
						GS	Kts	80	100	120	140	160	180
						FAF - MAPt 5.0 NM	min:sec	3:45	3:00	2:30	2:09	1:53	1:40
						Rate of descent (5.2%)	ft/min	415	520	625	730	835	940

For data tabulation see verso

Changes: EYP37 and EYP38 withdrawn; OCA(H); obstacles; scale; SDF withdrawn.

INSTRUMENT
APPROACH
CHART - ICAO

AERODROME ELEV 259
HEIGHTS RELATED TO
DTHR RWY 08 - ELEV 239

KAUNAS (EYKA)
VOR Z RWY 08
(CAT A/B)

TABULAR DESCRIPTION

VOR INSTRUMENT APPROACH from IAFs(KNA, MATAM, VEBUS)		
FIX/POINTS	COORDINATES	FIX FORMATION
MATAM (IAF)	54 54 08.9N 023 37 22.7E	BRG 069.87° / 15.74 NM KNA
VEBUS (IAF)	55 02 19.2N 023 42 11.7E	BRG 103.17° / 13.40 NM KNA
KNA (IAF)	54 57 37.4N 024 03 59.1E	
IF	54 58 10.8N 023 44 41.9E	BRG 085.47° / 11.13 NM KNA
FAF	54 57 56.2N 023 53 22.0E	BRG 085.47° / 6.13 NM KNA
MAPt	54 57 41.0N 024 02 00.9E	BRG 085.47° / 1.14 NM KNA
DTHR RWY 08	54 57 46.44N 024 03 50.94E	
Final approach descent angle: 3.00°		