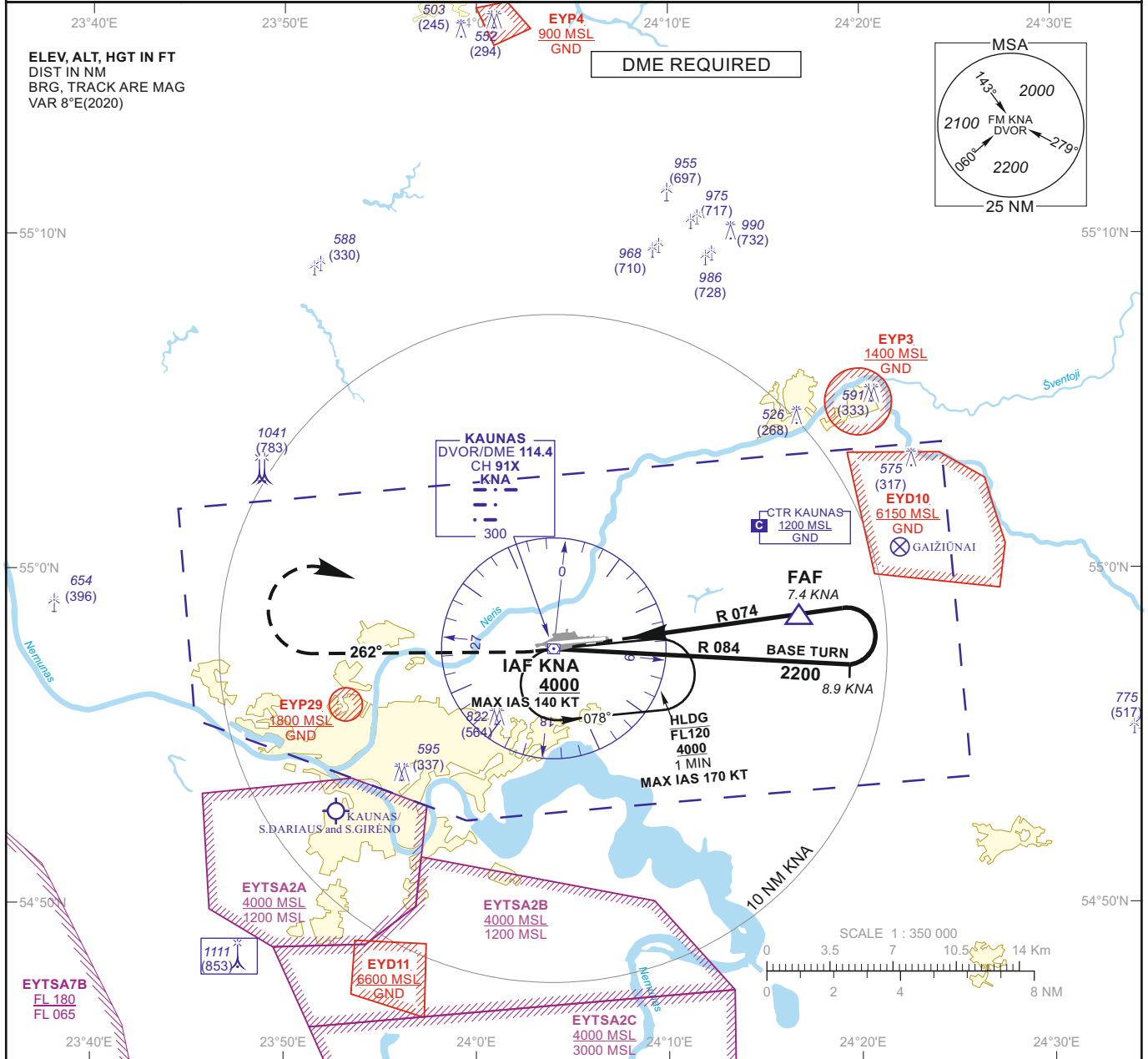


INSTRUMENT APPROACH CHART - ICAO

AERODROME ELEV 259
 HEIGHTS RELATED TO
 DTHR RWY 26 - ELEV 258

TWR 124.205
 118.505
 ATIS 129.055

**KAUNAS (EYKA)
 VOR Z RWY 26
 (CAT A/B)**

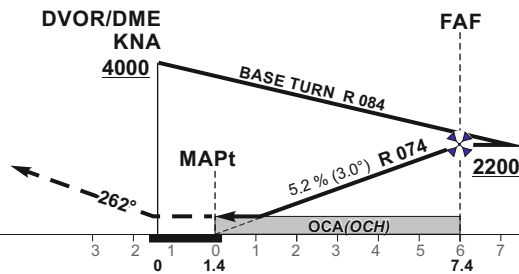


MISSED APPROACH

Climb via KNA, then turn right on track 262° to 2200, then turn right to KNA climbing to 4000. Climb with 3.5% or more until passing 2200 due to airspace structure.

DTHR ELEV 258

NM to/from DTHR RWY 26
 NM to/from DME KNA



TRANSITION ALT 5000

OCA(OCH)	STRAIGHT-IN APPROACH	VOR	A		B		DIST DME KNA										
			7	6	5	4	3	Altitude	Height	Timing not authorized for defining the MAPt							
			640	(390)			7	6	5	4	3	2090	1770	1460	1140	830	
												(1832)	(1512)	(1202)	(882)	(572)	
			730	(470)	760	(500)	Timing not authorized for defining the MAPt										
			GS		Kts		80	100	120	140	160	180					
			FAF-MAPt 6.0 NM		min:sec		4:30	3:36	3:00	2:34	2:15	2:00					
			Rate of descent (5.2%)		ft/min		415	520	625	730	835	940					

For data tabulation see verso

Changes: EYP37, EYP38 and SDF withdrawn; OCA(H); MAPt position; obstacles; scale.

INSTRUMENT
APPROACH
CHART - ICAO

AERODROME ELEV 259
HEIGHTS RELATED TO
DTHR RWY 26 - ELEV 258

KAUNAS (EYKA)
VOR Z RWY 26
(CAT A/B)

TABULAR DESCRIPTION

VOR INSTRUMENT APPROACH from IAF(KNA)		
FIX/POINTS	COORDINATES	FIX FORMATION
KNA (IAF)	54 57 37.4N 024 03 59.1E	
FAF	54 58 45.8N 024 16 36.6E	BRG 253.47° / 7.37 NM KNA
MAPt	54 57 50.2N 024 06 20.2E	BRG 253.47° / 1.37 NM KNA
DTHR RWY 26	54 57 53.79N 024 06 19.46E	
Final approach descent angle: 3.00°		

Changes: SDF withdrawn; MAPt coordinates and FIX formation.