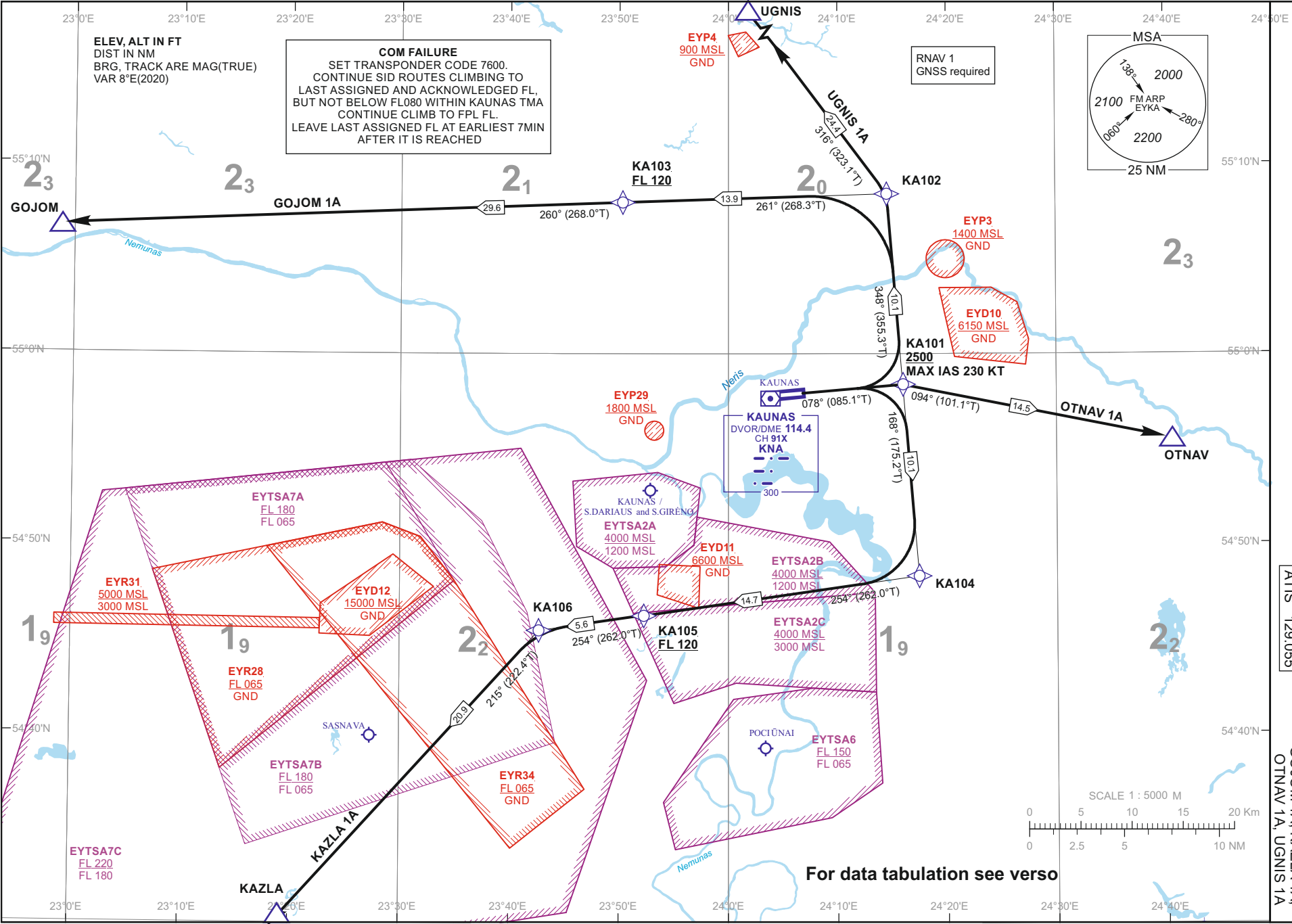


Changes: EYP36, EYP37 and EYP38 withdrawn.

30 OCT 2025

©2019 ORO NAVIGACIJA

AIRAC AMDT 03/25



STANDARD DEPARTURE CHART
INSTRUMENT (SID) - ICAO

TRANSITION ALT
5000

| | |
|------|---------|
| TWR | 124,205 |
| ATIS | 118,505 |
| | 129,055 |

KAUNAS (EYKA)
RNV RMY 08
GOJOM 1A, KAZLA 1A,
OTNAV 1A, UGNIS 1A

AIP LITHUANIA

EYKAAD 2.24-10-1

**STANDARD DEPARTURE CHART
INSTRUMENT (SID) - ICAO**

 TRANSITION ALT
5000

**KAUNAS (EYKA)
RNAV RWY 08**
GOJOM 1A, KAZLA 1A,
OTNAV 1A, UGNIS 1A

TABULAR DESCRIPTION
GOJOM 1A PDG 7.0% REQUIRED DUE TO OPERATIONAL REASONS UNTIL KA101

| Serial Number | Path Descriptor | Waypoint Identifier | Fly-over | Course/Track °M(°T) | Magnetic Variation | Distance (NM) | Turn Direction | Altitude (FT)/ Flight level | Speed (KT) | Navigation Specification |
|---------------|-----------------|---------------------|----------|---------------------|--------------------|---------------|----------------|-----------------------------|------------|--------------------------|
| 001 | CF | KA101 | — | 078(085.1) | 7.5 | 5.3 | — | +2500 | -230 | RNAV1 |
| 002 | TF | KA102 | — | 348(355.3) | 7.5 | 10.1 | — | — | — | RNAV1 |
| 003 | TF | KA103 | — | 261(268.3) | 7.5 | 13.9 | — | +FL120 | — | RNAV1 |
| 004 | TF | GOJOM | — | 260(268.0) | 7.5 | 29.6 | — | — | — | RNAV1 |

KAZLA 1A PDG 7.0% REQUIRED DUE TO OPERATIONAL REASONS UNTIL KA101

| Serial Number | Path Descriptor | Waypoint Identifier | Fly-over | Course/Track °M(°T) | Magnetic Variation | Distance (NM) | Turn Direction | Altitude (FT)/ Flight level | Speed (KT) | Navigation Specification |
|---------------|-----------------|---------------------|----------|---------------------|--------------------|---------------|----------------|-----------------------------|------------|--------------------------|
| 001 | CF | KA101 | — | 078(085.1) | 7.5 | 5.3 | — | +2500 | -230 | RNAV1 |
| 002 | TF | KA104 | — | 168(175.2) | 7.5 | 10.1 | — | — | — | RNAV1 |
| 003 | TF | KA105 | — | 254(262.0) | 7.5 | 14.7 | — | +FL120 | — | RNAV1 |
| 004 | TF | KA106 | — | 254(262.0) | 7.5 | 5.6 | — | — | — | RNAV1 |
| 005 | TF | KAZLA | — | 215(222.4) | 7.5 | 20.9 | — | — | — | RNAV1 |

OTNAV 1A PDG 7.0% REQUIRED DUE TO OPERATIONAL REASONS UNTIL KA101

| Serial Number | Path Descriptor | Waypoint Identifier | Fly-over | Course/Track °M(°T) | Magnetic Variation | Distance (NM) | Turn Direction | Altitude (FT)/ Flight level | Speed (KT) | Navigation Specification |
|---------------|-----------------|---------------------|----------|---------------------|--------------------|---------------|----------------|-----------------------------|------------|--------------------------|
| 001 | CF | KA101 | — | 078(085.1) | 7.5 | 5.3 | — | +2500 | -230 | RNAV1 |
| 002 | TF | OTNAV | — | 094(101.1) | 7.5 | 14.5 | — | — | — | RNAV1 |

UGNIS 1A PDG 7.0% REQUIRED DUE TO OPERATIONAL REASONS UNTIL KA101

| Serial Number | Path Descriptor | Waypoint Identifier | Fly-over | Course/Track °M(°T) | Magnetic Variation | Distance (NM) | Turn Direction | Altitude (FT)/ Flight level | Speed (KT) | Navigation Specification |
|---------------|-----------------|---------------------|----------|---------------------|--------------------|---------------|----------------|-----------------------------|------------|--------------------------|
| 001 | CF | KA101 | — | 078(085.1) | 7.5 | 5.3 | — | +2500 | -230 | RNAV1 |
| 002 | TF | KA102 | — | 348(355.3) | 7.5 | 10.1 | — | — | — | RNAV1 |
| 003 | TF | UGNIS | — | 316(323.1) | 7.5 | 24.4 | — | — | — | RNAV1 |

WAYPOINT COORDINATES

| FIX/POINTS | COORDINATES | FIX/POINTS | COORDINATES |
|------------|--------------------------|------------|--------------------------|
| KA101 | 54 58 21.9N 024 15 57.4E | GOJOM | 55 06 43.5N 022 58 51.0E |
| KA102 | 55 08 25.0N 024 14 30.9E | KAZLA | 54 29 59.3N 023 18 33.8E |
| KA103 | 55 07 57.6N 023 50 18.0E | OTNAV | 54 55 33.0N 024 40 36.0E |
| KA104 | 54 48 17.1N 024 17 25.3E | UGNIS | 55 27 50.9N 023 48 44.5E |
| KA105 | 54 46 11.9N 023 52 16.7E | KNA | 54 57 37.4N 024 03 59.1E |
| KA106 | 54 45 24.8N 023 42 42.2E | | |

FOR DETAILED FLIGHT PROCEDURES REFER TO AIP EYKA AD 2.22