

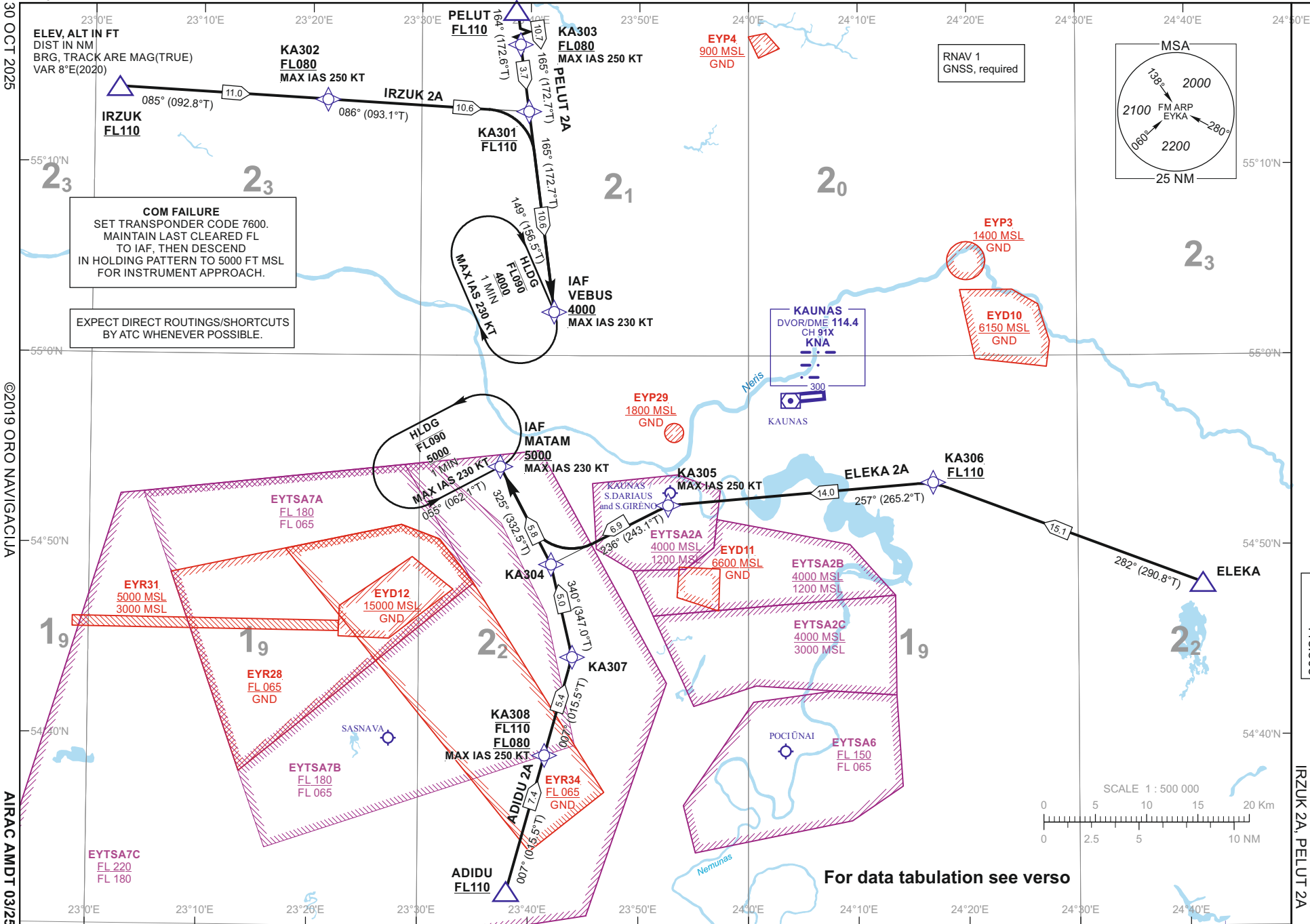
STANDARD ARRIVAL CHART
INSTRUMENT (STAR) - ICAO

TRANSITION ALT
5000

ATIS 129.055
TWR 124.205
118.505

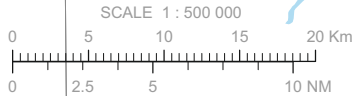
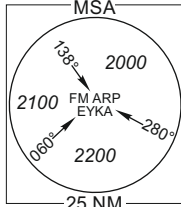
KAUNAS (EYKA)
RNAV RMY 08
ADIDU 2A, ELEKA 2A,
IRZUK 2A, PELUT 2A

Changes: EYP36, EYP37, EYP38 and CDA note withdrawn.



COM FAILURE
SET TRANSPONDER CODE 7600.
MAINTAIN LAST CLEARED FL
TO IAF, THEN DESCEND
IN HOLDING PATTERN TO 5000 FT MSL
FOR INSTRUMENT APPROACH.

EXPECT DIRECT ROUTINGS/SHORTCUTS
BY ATC WHENEVER POSSIBLE.



For data tabulation see verso

30 OCT 2025

©2019 ORO NAVIGACIJA

AIRAC AMDT 03/25

**STANDARD ARRIVAL CHART
INSTRUMENT (STAR) - ICAO**

TRANSITION ALT 5000

**KAUNAS (EYKA)
RNAV RWY 08**

 ADIDU 2A, ELEKA 2A,
IRZUK 2A, PELUT 2A

TABULAR DESCRIPTION
ADIDU 2A

Serial Number	Path Descriptor	Waypoint Identifier	Fly-over	Course/Track °M(°T)	Magnetic Variation	Distance (NM)/ Time	Turn Direction	Altitude (FT)/ Flight level	Speed (KT)	Navigation Specification
001	IF	ADIDU	—	—	8.1	—	—	+FL110	—	RNAV1
002	TF	KA308	—	007(015.5)	8.1	7.4	—	-FL110/+FL080	-250	RNAV1
003	TF	KA307	—	007(015.5)	7.5	5.4	—	—	—	RNAV1
004	TF	KA304	—	340(347.0)	7.5	5.0	—	—	—	RNAV1
005	TF	MATAM	—	325(332.5)	7.5	5.8	—	+5000	-230	RNAV1

ELEKA 2A

Serial Number	Path Descriptor	Waypoint Identifier	Fly-over	Course/Track °M(°T)	Magnetic Variation	Distance (NM)/ Time	Turn Direction	Altitude (FT)/ Flight level	Speed (KT)	Navigation Specification
001	IF	ELEKA	—	—	8.4	—	—	—	—	RNAV1
002	TF	KA306	—	282(290.8)	8.4	15.1	—	+FL110	—	RNAV1
003	TF	KA305	—	257(265.2)	7.5	14.0	—	—	-250	RNAV1
004	TF	KA304	—	236(243.1)	7.5	6.9	—	—	—	RNAV1
005	TF	MATAM	—	325(332.5)	7.5	5.8	—	+5000	-230	RNAV1

IRZUK 2A

Serial Number	Path Descriptor	Waypoint Identifier	Fly-over	Course/Track °M(°T)	Magnetic Variation	Distance (NM)/ Time	Turn Direction	Altitude (FT)/ Flight level	Speed (KT)	Navigation Specification
001	IF	IRZUK	—	—	8.1	—	—	+FL110	—	RNAV1
002	TF	KA302	—	085(092.8)	8.1	11.0	—	+FL080	-250	RNAV1
003	TF	KA301	—	086(093.1)	7.5	10.6	—	-FL110	—	RNAV1
004	TF	VEBUS	—	165(172.7)	7.5	10.6	—	+4000	-230	RNAV1

PELUT 2A

Serial Number	Path Descriptor	Waypoint Identifier	Fly-over	Course/Track °M(°T)	Magnetic Variation	Distance (NM)/ Time	Turn Direction	Altitude (FT)/ Flight level	Speed (KT)	Navigation Specification
001	IF	PELUT	—	—	8.3	—	—	+FL110	—	RNAV1
002	TF	KA303	—	164(172.6)	8.3	10.7	—	+FL080	-250	RNAV1
003	TF	KA301	—	165(172.7)	7.5	3.7	—	-FL110	—	RNAV1
004	TF	VEBUS	—	165(172.7)	7.5	10.6	—	+4000	-230	RNAV1

FOR DETAILED FLIGHT PROCEDURES REFER TO AIP EYKA AD 2.22

**STANDARD ARRIVAL CHART
INSTRUMENT (STAR) - ICAO**TRANSITION ALT
5000**KAUNAS (EYKA)
RNAV RWY 08**
ADIDU 2A, ELEKA 2A,
IRZUK 2A, PELUT 2A

TABULAR DESCRIPTION

HOLDINGS IDENTIFICATION

<i>Holding fix</i>	<i>Geographical coordinates</i>	<i>Inbound track °M(°T)</i>	<i>Magnetic Variation</i>	<i>Outbound distance (NM)/ Time</i>	<i>Turn Direction</i>	<i>Minimum/Maximum holding altitude (FT)/Flight level</i>	<i>Speed (KT)</i>
MATAM	54 54 08.9N 023 37 22.7E	055(062.1)	7.5	1 min	L	+5000 / -FL090	-230
VEBUS	55 02 19.2N 023 42 11.7E	149(156.5)	7.5	1 min	R	+4000 / -FL090	-230

WAYPOINT COORDINATES

FIX/POINTS	COORDINATES	FIX/POINTS	COORDINATES
KA301	55 12 49.1N 023 39 50.7E	ADIDU	54 31 49.1N 023 38 03.5E
KA302	55 13 24.8N 023 21 21.6E	ELEKA	54 48 01.6N 024 41 20.1E
KA303	55 16 27.3N 023 39 01.5E	IRZUK	55 13 58.8N 023 02 14.4E
KA304	54 49 00.9N 023 42 01.5E	MATAM	54 54 08.9N 023 37 22.7E
KA305	54 52 08.3N 023 52 41.1E	PELUT	55 27 04.4N 023 36 37.1E
KA306	54 53 20.5N 024 16 50.5E	VEBUS	55 02 19.2N 023 42 11.7E
KA307	54 44 08.9N 023 43 58.0E	KNA	54 57 37.4N 024 03 59.1E
KA308	54 38 57.2N 023 41 28.2E		

FOR DETAILED FLIGHT PROCEDURES REFER TO AIP EYKA AD 2.22

SPECIALUSIS TUŠČIAS PUSLAPIS

THIS PAGE INTENTIONALLY LEFT BLANK