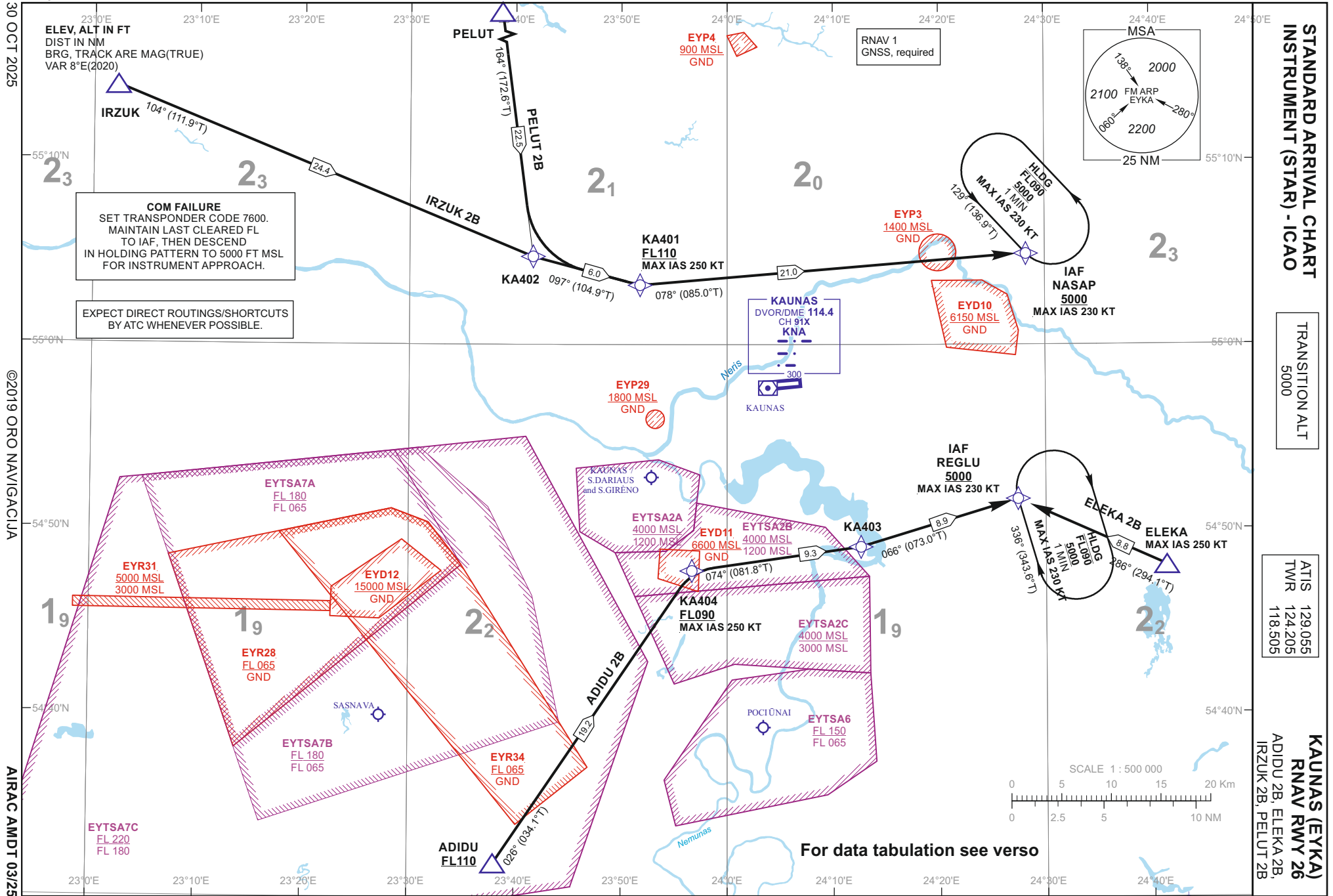
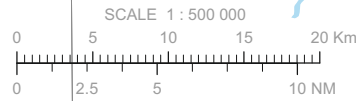


Changes: EYP36, EYP37, EYP38 and CDA note withdrawn.



COM FAILURE
 SET TRANSPONDER CODE 7600.
 MAINTAIN LAST CLEARED FL
 TO IAF, THEN DESCEND
 IN HOLDING PATTERN TO 5000 FT MSL
 FOR INSTRUMENT APPROACH.

EXPECT DIRECT ROUTINGS/SHORTCUTS
 BY ATC WHENEVER POSSIBLE.



For data tabulation see verso

**STANDARD ARRIVAL CHART
 INSTRUMENT (STAR) - ICAO**

TRANSITION ALT
 5000

ATIS 129 055
 TWR 124 205
 118 505

KAUNAS (EYKA)
RNAV RMY 26
 ADIDU 2B, ELEKA 2B,
 IRZUK 2B, PELUT 2B

**STANDARD ARRIVAL CHART
INSTRUMENT (STAR) - ICAO**TRANSITION ALT
5000**KAUNAS (EYKA)
RNAV RWY 26**ADIDU 2B, ELEKA 2B,
IRZUK 2B, PELUT 2B

TABULAR DESCRIPTION

ADIDU 2B

Serial Number	Path Descriptor	Waypoint Identifier	Fly-over	Course/Track °M(°T)	Magnetic Variation	Distance (NM)/ Time	Turn Direction	Altitude (FT)/ Flight level	Speed (KT)	Navigation Specification
001	IF	ADIDU	—	—	8.1	—	—	+FL110	—	RNAV1
002	TF	KA404	—	026(034.1)	8.1	19.2	—	+FL090	-250	RNAV1
003	TF	KA403	—	074(081.8)	7.5	9.3	—	—	—	RNAV1
004	TF	REGLU	—	066(073.0)	7.5	8.9	—	+5000	-230	RNAV1

ELEKA 2B

Serial Number	Path Descriptor	Waypoint Identifier	Fly-over	Course/Track °M(°T)	Magnetic Variation	Distance (NM)/ Time	Turn Direction	Altitude (FT)/ Flight level	Speed (KT)	Navigation Specification
001	IF	ELEKA	—	—	8.4	—	—	—	-250	RNAV1
002	TF	REGLU	—	286(294.1)	7.5	8.8	—	+5000	-230	RNAV1

IRZUK 2B

Serial Number	Path Descriptor	Waypoint Identifier	Fly-over	Course/Track °M(°T)	Magnetic Variation	Distance (NM)/ Time	Turn Direction	Altitude (FT)/ Flight level	Speed (KT)	Navigation Specification
001	IF	IRZUK	—	—	8.1	—	—	—	—	RNAV1
002	TF	KA402	—	104(111.9)	8.1	24.4	—	—	—	RNAV1
003	TF	KA401	—	097(104.9)	7.5	6.0	—	+FL110	-250	RNAV1
004	TF	NASAP	—	078(085.0)	7.5	21.0	—	+5000	-230	RNAV1

PELUT 2B

Serial Number	Path Descriptor	Waypoint Identifier	Fly-over	Course/Track °M(°T)	Magnetic Variation	Distance (NM)/ Time	Turn Direction	Altitude (FT)/ Flight level	Speed (KT)	Navigation Specification
001	IF	PELUT	—	—	8.3	—	—	—	—	RNAV1
002	TF	KA402	—	164(172.6)	8.3	22.5	—	—	—	RNAV1
003	TF	KA401	—	097(104.9)	7.5	6.0	—	+FL110	-250	RNAV1
004	TF	NASAP	—	078(085.0)	7.5	21.0	—	+5000	-230	RNAV1

FOR DETAILED FLIGHT PROCEDURES REFER TO AIP EYKA AD 2.22

**STANDARD ARRIVAL CHART
INSTRUMENT (STAR) - ICAO**

TRANSITION ALT
5000

**KAUNAS (EYKA)
RNAV RWY 26**
ADIDU 2B, ELEKA 2B,
IRZUK 2B, PELUT 2B

TABULAR DESCRIPTION

HOLDINGS IDENTIFICATION							
<i>Holding fix</i>	<i>Geographical coordinates</i>	<i>Inbound track °M(°T)</i>	<i>Magnetic Variation</i>	<i>Outbound distance (NM)/ Time</i>	<i>Turn Direction</i>	<i>Minimum/Maximum holding altitude (FT)/Flight level</i>	<i>Speed (KT)</i>
NASAP	55 04 57.2N 024 28 10.6E	129(136.9)	7.5	1 min	L	+5000 / -FL090	-230
REGLU	54 51 37.2N 024 27 23.7E	336(343.6)	7.5	1 min	R	+5000 / -FL090	-230

WAYPOINT COORDINATES			
FIX/POINTS	COORDINATES	FIX/POINTS	COORDINATES
KA401	55 03 13.0N 023 51 45.7E	ADIDU	54 31 49.1N 023 38 03.5E
KA402	55 04 45.7N 023 41 40.4E	ELEKA	54 48 01.6N 024 41 20.1E
KA403	54 49 01.2N 024 12 35.9E	IRZUK	55 13 58.8N 023 02 14.4E
KA404	54 47 42.6N 023 56 40.9E	NASAP	55 04 57.2N 024 28 10.6E
		PELUT	55 27 04.4N 023 36 37.1E
		REGLU	54 51 37.2N 024 27 23.7E
		KNA	54 57 37.4N 024 03 59.1E

FOR DETAILED FLIGHT PROCEDURES REFER TO AIP EYKA AD 2.22

Changes:

SPECIALUSIS TUŠČIAS PUSLAPIS

THIS PAGE INTENTIONALLY LEFT BLANK