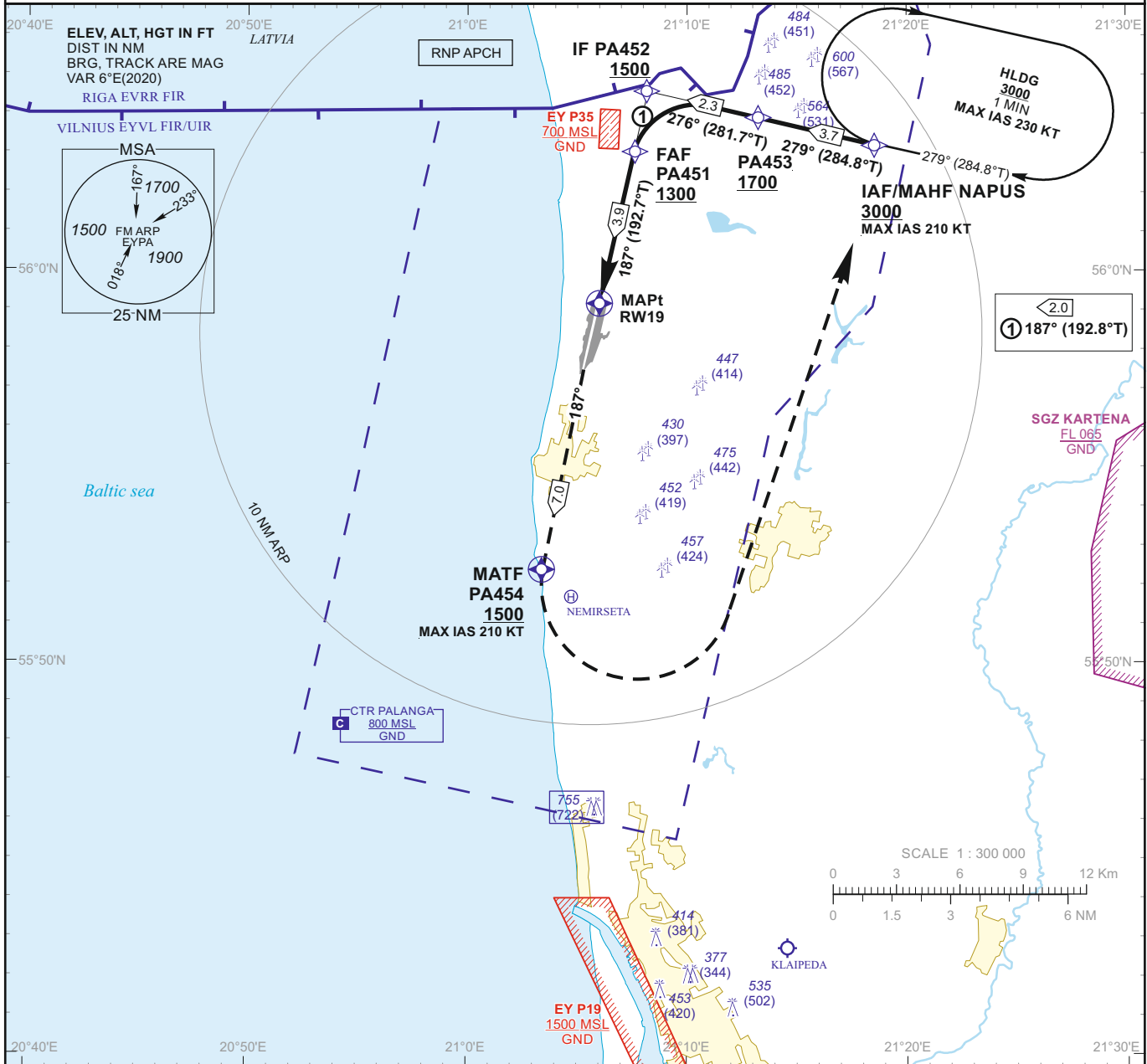


**INSTRUMENT APPROACH CHART - ICAO**

**AERODROME ELEV 33**  
 HEIGHTS RELATED TO AD ELEV  
 DTHR RWY 19 - ELEV 32

TWR 124.305  
 118.305  
 ATIS 127.805

**PALANGA RNP (LNAV only) RWY 19 (CAT A/B/C/D)**



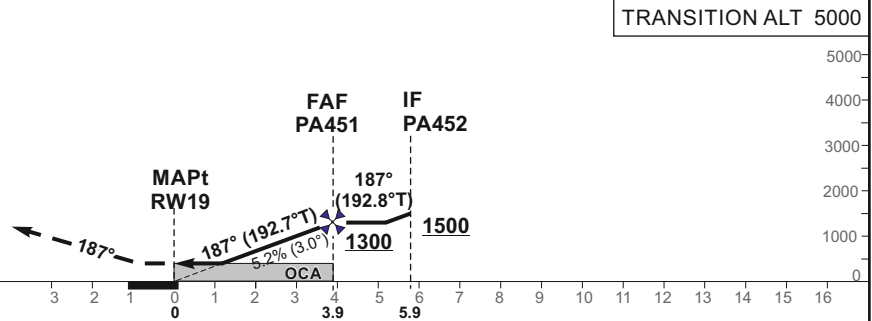
**MISSED APPROACH**

Climb on course 187° to PA454 [A1500+], then turn left [K210-], direct to NAPUS climbing to 3000.

TCH 50

DTHR ELEV 32

NM to/from DTHR RWY 19  
 NM to/from DTHR RWY 19



OCA(OCH)	LNAV	DIST TO RWY19				Altitude		Timing not authorized for defining the MAPt								
		A	B	C	D	3	2	GS	Kts	80	100	120	140	160	180	
STRAIGHT-IN APPROACH		420 (390)				1030 / 720										
CIRCLING		490 (450)	740 (710)	870 (840)	not authorized	GS	Kts	80	100	120	140	160	180			
						FAF-MAPt	3.9 NM	min:sec	2:55	2:20	1:57	1:40	1:28	1:18		
						Rate of descent (5.2%)	ft/min	415	520	625	730	835	940			

For data tabulation see verso

Changes: scale; alternative channel added; obstacles: OCA(H); ALT on PA451.

**INSTRUMENT  
APPROACH  
CHART - ICAO**

**AERODROME ELEV 33**  
HEIGHTS RELATED TO AD ELEV  
DTHR RWY 19 - ELEV 32

**PALANGA**  
**RNP (LNAV only) RWY 19**  
**(CAT A/B/C/D)**

**TABULAR DESCRIPTION**

**IAF NAPUS**

Serial Number	Path Descriptor	Waypoint Identifier	Fly-over	Course/Track °M(°T)	Magnetic Variation	Distance (NM)/ Time	Turn Direction	Altitude (FT)/ Flight level	Speed (KT)	VPA/TCH	Navigation Specification
001	IF	NAPUS	—	—	5.9	—	—	+3000	-210	—	RNP APCH
002	TF	PA453	—	279(284.8)	5.9	3.7	—	+1700	—	—	RNP APCH
003	TF	PA452	—	276(281.7)	5.9	2.3	—	+1500	—	—	RNP APCH
004	TF	PA451	—	187(192.8)	5.9	2.0	—	+1300	—	—	RNP APCH
005	TF	RW19	Y	187(192.7)	5.9	3.9	—	@420	—	-3.00/50	RNP APCH
006	CF	PA454	Y	187(192.7)	5.9	7.0	—	+1500	-210	—	RNP APCH
007	DF	NAPUS	—	—	5.9	—	L	+3000	-210	—	RNP APCH
008	HM	NAPUS	—	279(284.8)	5.9	1 min	R	+3000	-230	—	RNAV 1

FIX/POINTS	COORDINATES
NAPUS (IAF/MAHF)	56 03 12.1N 021 18 32.7E
PA453	56 04 08.3N 021 12 13.2E
PA452 (IF)	56 04 36.6N 021 08 08.6E
PA451 (FAF)	56 02 39.6N 021 07 21.2E
RW19 (MAPt)	55 58 54.36N 021 05 50.27E
PA454 (MATF)	55 52 05.5N 021 03 05.9E