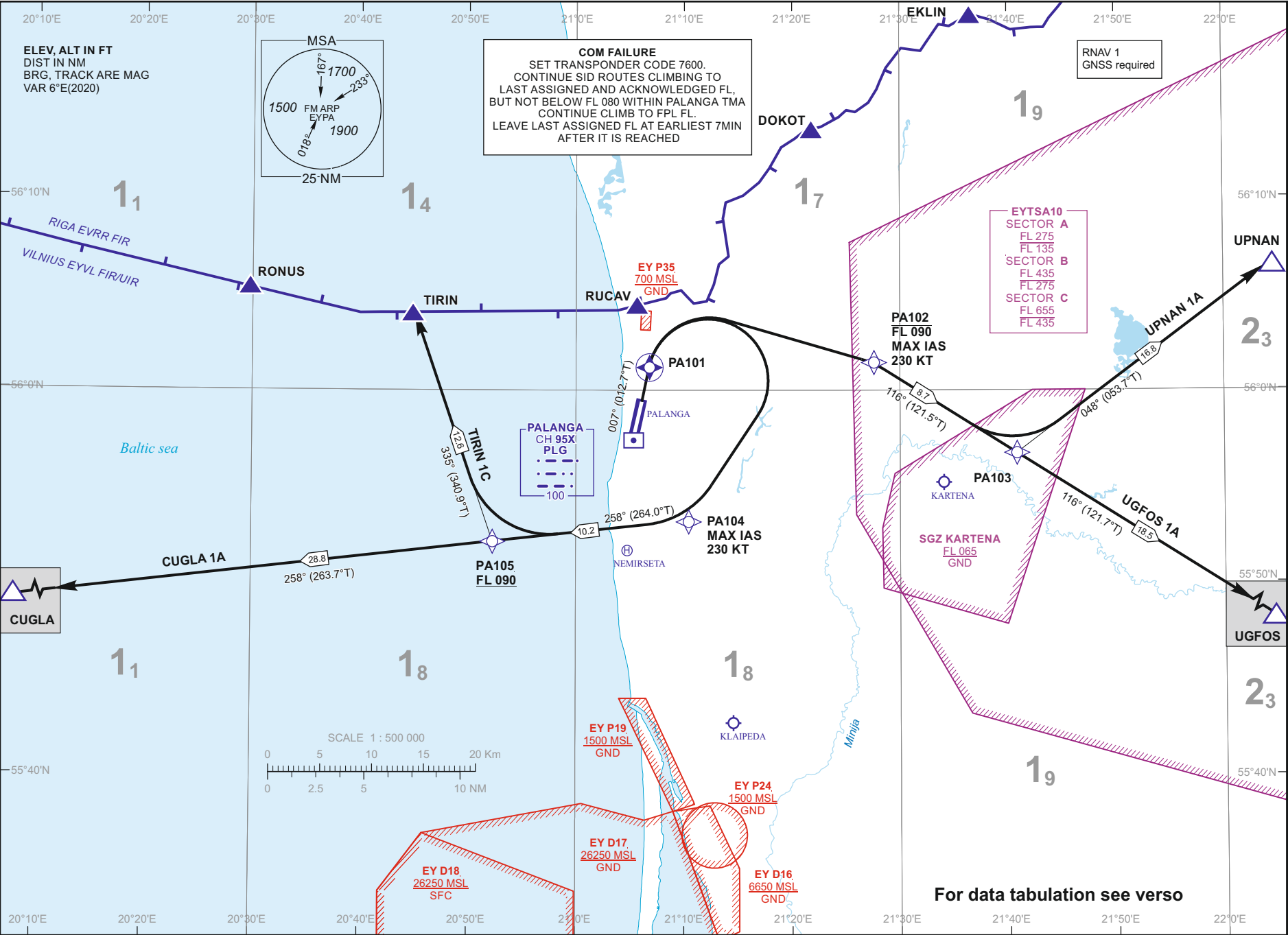


Changes: EY TSA3 withdrawn; EY TSA10 A/B/C added.

30 OCT 2025

©2019 ORO NAVIGACIJA

AIRAC AMDT 03/25



STANDARD DEPARTURE CHART
INSTRUMENT (SID) - ICAO

TRANSITION ALT
 5000

TWR 124.305
 ATIS 118.305
 127.805

PALANGA (EYPA)
RNAV RMY 01
 CUGLA 1A, TIRIN 1C,
 UGFOS 1A, UPNAN 1A

AIP LITHUANIA

EYPAAD 2.24-12-1

**STANDARD DEPARTURE CHART
INSTRUMENT (SID) - ICAO**TRANSITION ALT
5000**PALANGA (EYPA)
RNAV RWY 01**
CUGLA 1A, TIRIN 1C,
UGFOS 1A, UPNAN 1A

TABULAR DESCRIPTION

CUGLA 1A PDG 7.7% REQUIRED DUE TO OPERATIONAL REASONS UNTIL PA101

Serial Number	Path Descriptor	Waypoint Identifier	Fly-over	Course/Track °M(°T)	Magnetic Variation	Distance (NM)	Turn Direction	Altitude (FT)/ Flight level	Speed (KT)	Navigation Specification
001	CF	PA101	Y	007(012.7)	5.9	2.0	—	—	—	RNAV1
002	DF	PA104	—	—	5.9	—	R	—	-230	RNAV1
003	TF	PA105	—	258(264.0)	5.9	10.2	—	+FL090	—	RNAV1
004	TF	CUGLA	—	258(263.7)	5.9	28.8	—	—	—	RNAV1

TIRIN 1C PDG 7.7% REQUIRED DUE TO OPERATIONAL REASONS UNTIL PA101

Serial Number	Path Descriptor	Waypoint Identifier	Fly-over	Course/Track °M(°T)	Magnetic Variation	Distance (NM)	Turn Direction	Altitude (FT)/ Flight level	Speed (KT)	Navigation Specification
001	CF	PA101	Y	007(012.7)	5.9	2.0	—	—	—	RNAV1
002	DF	PA104	—	—	5.9	—	R	—	-230	RNAV1
003	TF	PA105	—	258(264.0)	5.9	10.2	—	+FL090	—	RNAV1
004	TF	TIRIN	—	335(340.9)	5.9	12.6	—	—	—	RNAV1

UGFOS 1A PDG 7.7% REQUIRED DUE TO OPERATIONAL REASONS UNTIL PA101

Serial Number	Path Descriptor	Waypoint Identifier	Fly-over	Course/Track °M(°T)	Magnetic Variation	Distance (NM)	Turn Direction	Altitude (FT)/ Flight level	Speed (KT)	Navigation Specification
001	CF	PA101	Y	007(012.7)	5.9	2.0	—	—	—	RNAV1
002	DF	PA102	—	—	5.9	—	R	-FL090	-230	RNAV1
003	TF	PA103	—	116(121.5)	5.9	8.7	—	—	—	RNAV1
004	TF	UGFOS	—	116(121.7)	5.9	18.5	—	—	—	RNAV1

UPNAN 1A PDG 7.7% REQUIRED DUE TO OPERATIONAL REASONS UNTIL PA101

Serial Number	Path Descriptor	Waypoint Identifier	Fly-over	Course/Track °M(°T)	Magnetic Variation	Distance (NM)	Turn Direction	Altitude (FT)/ Flight level	Speed (KT)	Navigation Specification
001	CF	PA101	Y	007(012.7)	5.9	2.0	—	—	—	RNAV1
002	DF	PA102	—	—	5.9	—	R	-FL090	-230	RNAV1
003	TF	PA103	—	116(121.5)	5.9	8.7	—	—	—	RNAV1
004	TF	UPNAN	—	048(053.7)	5.9	16.8	—	—	—	RNAV1

WAYPOINT COORDINATES

FIX/POINTS	COORDINATES	FIX/POINTS	COORDINATES
PA101	56 00 55.9N 021 06 39.3E	CUGLA	55 48 48.6N 020 01 29.9E
PA102	56 01 09.3N 021 27 16.5E	TIRIN	56 04 02.2N 020 44 52.2E
PA103	55 56 36.3N 021 40 28.1E	UGFOS	55 46 52.0N 022 08 18.7E
PA104	55 53 12.6N 021 10 17.1E	UPNAN	56 06 27.9N 022 04 35.9E
PA105	55 52 07.8N 020 52 14.3E	PLG	55 57 23.5N 021 05 13.4E

FOR DETAILED FLIGHT PROCEDURES REFER TO AIP EYPAAD 2.22