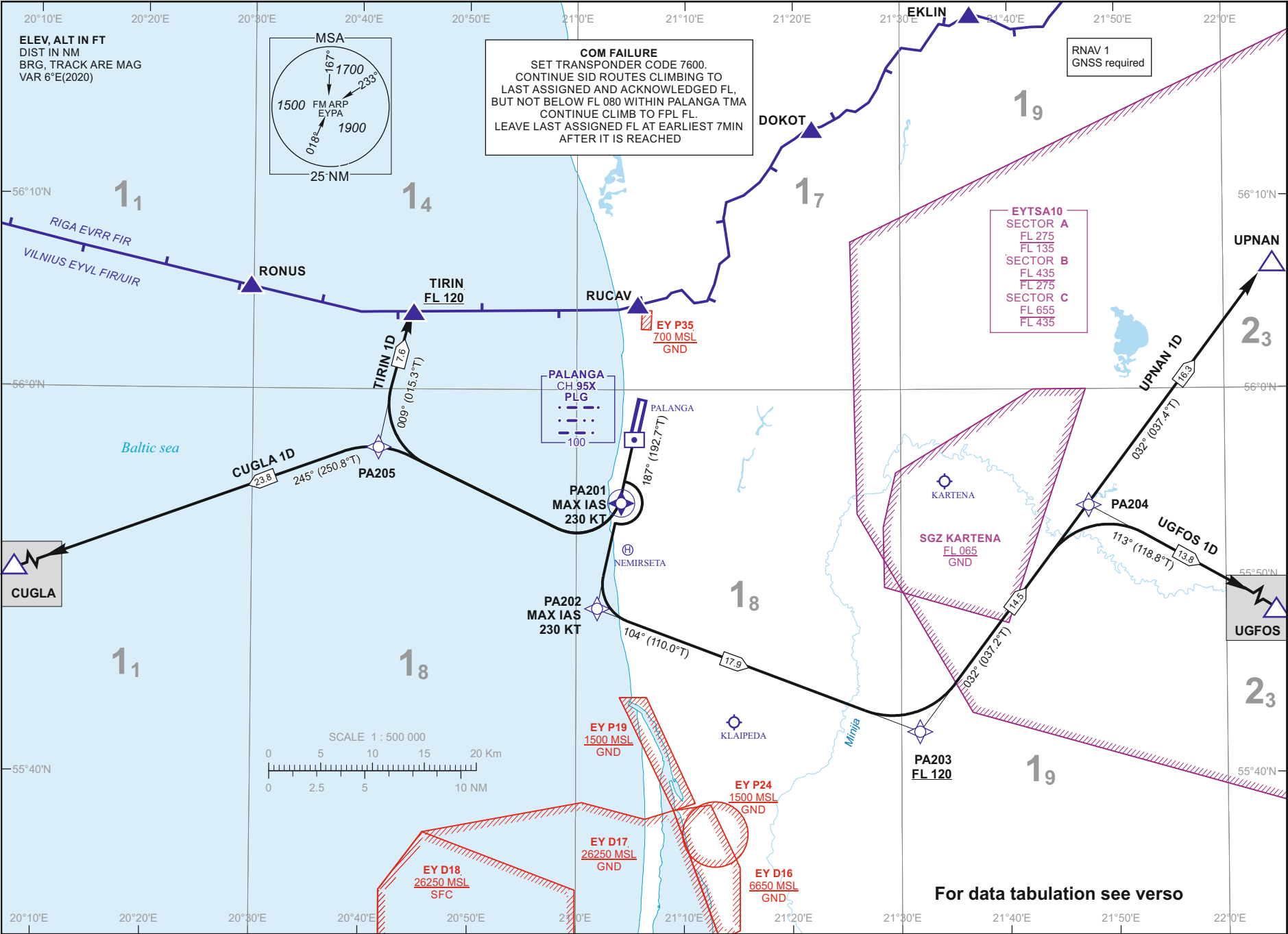


Changes: EY TSA3 withdrawn; EY TSA10 A/B/C added.

30 OCT 2025

©2019 ORO NAVIGACIJA

AIRAC AMDT 03/25



STANDARD DEPARTURE CHART
INSTRUMENT (SID) - ICAO

TRANSITION ALT
5000

TWR 124.305
ATIS 118.305
127.805

PALANGA (EYPA)
RNAV Rwy 19
CUGLA 1D, TIRIN 1D,
UGFOS 1D, UPNAN 1D

AIP LITHUANIA

EYPAAD 2.24-13-1

**STANDARD DEPARTURE CHART
INSTRUMENT (SID) - ICAO**TRANSITION ALT
5000**PALANGA (EYPA)
RNAV RWY 19**
CUGLA 1D, TIRIN 1D,
UGFOS 1D, UPNAN 1D

TABULAR DESCRIPTION

CUGLA 1D PDG 7.0% REQUIRED DUE TO OPERATIONAL REASONS UNTIL PA205

Serial Number	Path Descriptor	Waypoint Identifier	Fly-over	Course/Track °M(°T)	Magnetic Variation	Distance (NM)	Turn Direction	Altitude (FT)/ Flight level	Speed (KT)	Navigation Specification
001	CF	PA201	Y	187(192.7)	5.9	4.0	—	—	-230	RNAV1
002	DF	PA205	—	—	5.9	—	R	—	—	RNAV1
003	TF	CUGLA	—	245(250.8)	5.9	23.8	—	—	—	RNAV1

TIRIN 1D PDG 7.0% REQUIRED DUE TO OPERATIONAL REASONS UNTIL PA205

Serial Number	Path Descriptor	Waypoint Identifier	Fly-over	Course/Track °M(°T)	Magnetic Variation	Distance (NM)	Turn Direction	Altitude (FT)/ Flight level	Speed (KT)	Navigation Specification
001	CF	PA201	Y	187(192.7)	5.9	4.0	—	—	-230	RNAV1
002	DF	PA205	—	—	5.9	—	R	—	—	RNAV1
003	TF	TIRIN	—	009(015.3)	5.9	7.6	—	+FL120	—	RNAV1

UGFOS 1D PDG 7.0% REQUIRED DUE TO OPERATIONAL REASONS UNTIL PA202

Serial Number	Path Descriptor	Waypoint Identifier	Fly-over	Course/Track °M(°T)	Magnetic Variation	Distance (NM)	Turn Direction	Altitude (FT)/ Flight level	Speed (KT)	Navigation Specification
001	CF	PA202	—	187(192.7)	5.9	9.8	—	—	-230	RNAV1
002	TF	PA203	—	104(110.0)	5.9	17.9	—	+FL120	—	RNAV1
003	TF	PA204	—	032(037.2)	5.9	14.5	—	—	—	RNAV1
004	TF	UGFOS	—	113(118.8)	5.9	13.8	—	—	—	RNAV1

UPNAN 1D PDG 7.0% REQUIRED DUE TO OPERATIONAL REASONS UNTIL PA202

Serial Number	Path Descriptor	Waypoint Identifier	Fly-over	Course/Track °M(°T)	Magnetic Variation	Distance (NM)	Turn Direction	Altitude (FT)/ Flight level	Speed (KT)	Navigation Specification
001	CF	PA202	—	187(192.7)	5.9	9.8	—	—	-230	RNAV1
002	TF	PA203	—	104(110.0)	5.9	17.9	—	+FL120	—	RNAV1
003	TF	PA204	—	032(037.2)	5.9	14.5	—	—	—	RNAV1
004	TF	UPNAN	—	032(037.4)	5.9	16.3	—	—	—	RNAV1

WAYPOINT COORDINATES

FIX/POINTS	COORDINATES	FIX/POINTS	COORDINATES
PA201	55 53 53.6N 021 03 49.3E	CUGLA	55 48 48.6N 020 01 29.9E
PA202	55 48 11.8N 021 01 32.4E	TIRIN	56 04 02.2N 020 44 52.2E
PA203	55 42 01.7N 021 31 15.8E	UGFOS	55 46 52.0N 022 08 18.7E
PA204	55 53 32.1N 021 46 50.9E	UPNAN	56 06 27.9N 022 04 35.9E
PA205	55 56 43.4N 020 41 18.0E	PLG	55 57 23.5N 021 05 13.4E

FOR DETAILED FLIGHT PROCEDURES REFER TO AIP EYPAAD 2.22