

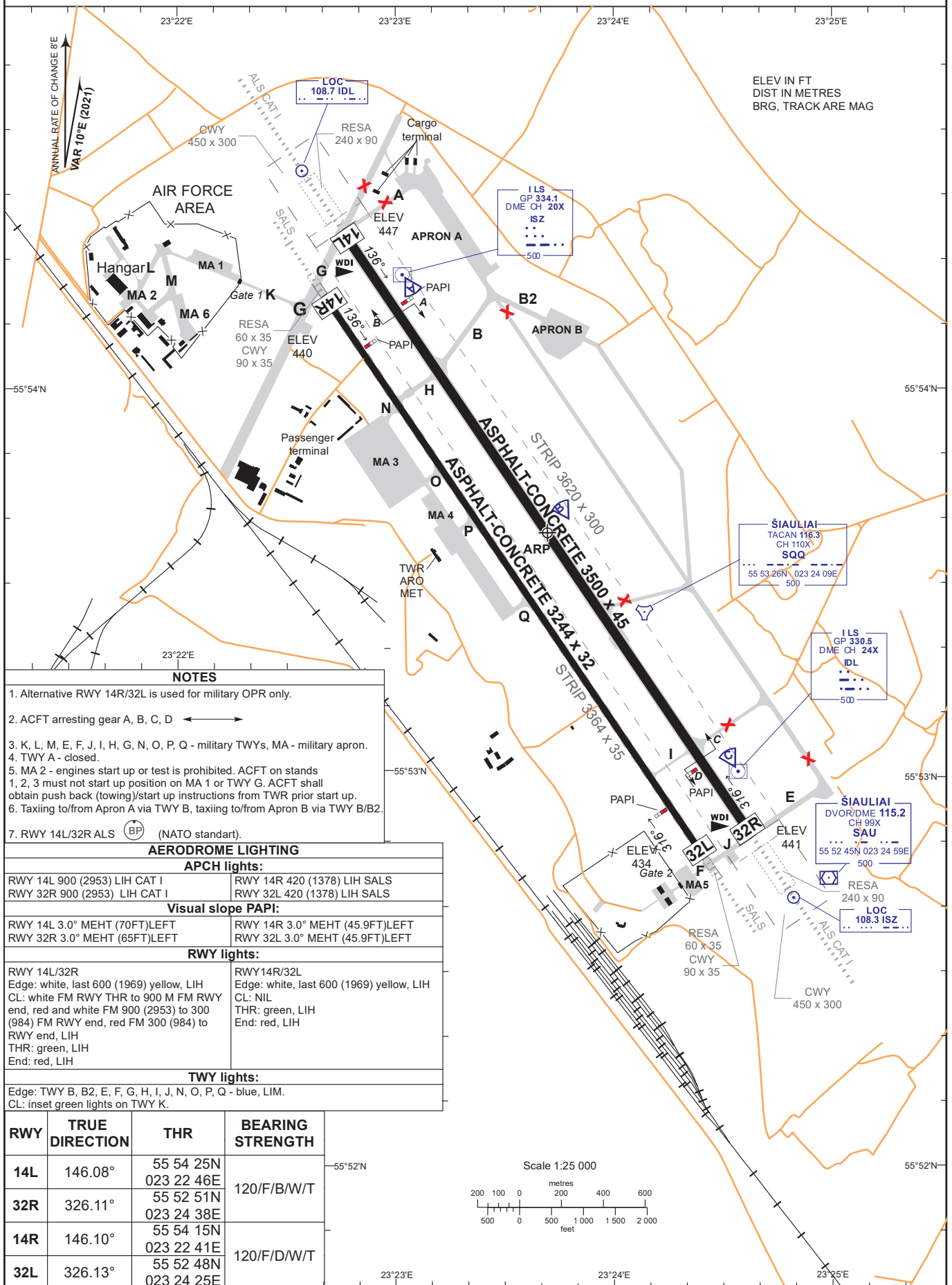
AERODROME CHART - ICAO

AERODROME ELEV 447

55° 53' 38" N  
023° 23' 42" E

TWR 120.405  
ATIS 120.755

SIAULIAI (EYSA)



ELEV IN FT  
DIST IN METRES  
BRG, TRACK ARE MAG

NOTES

- Alternative RWY 14R/32L is used for military OPR only.
- ACFT arresting gear A, B, C, D
- K, L, M, E, F, J, I, H, G, N, O, P, Q - military TWYs, MA - military apron.
- TWY A - closed.
- MA 2 - engines start up or test is prohibited. ACFT on stands 1, 2, 3 must not start up position on MA 1 or TWY G. ACFT shall obtain push back (towing)/start up instructions from TWR prior start up.
- Taxiing to/from Apron A via TWY B, taxiing to/from Apron B via TWY B/B2.
- RWY 14L/32R ALS (BP) (NATO standart).

AERODROME LIGHTING

APCH lights:

RWY 14L 900 (2953) LIH CAT I      RWY 14R 420 (1378) LIH SALS  
RWY 32R 900 (2953) LIH CAT I      RWY 32L 420 (1378) LIH SALS

Visual slope PAPI:

RWY 14L 3.0° MEHT (70FT)LEFT      RWY 14R 3.0° MEHT (45.9FT)LEFT  
RWY 32R 3.0° MEHT (65FT)LEFT      RWY 32L 3.0° MEHT (45.9FT)LEFT

RWY lights:

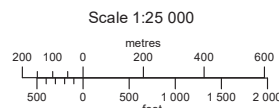
RWY 14L/32R  
Edge: white, last 600 (1969) yellow, LIH  
CL: white FM RWY THR to 900 M FM RWY end, red and white FM 900 (2953) to 300 (984) FM RWY end, red FM 300 (984) to RWY end, LIH  
THR: green, LIH  
End: red, LIH

RWY 14R/32L  
Edge: white, last 600 (1969) yellow, LIH  
CL: NIL  
THR: green, LIH  
End: red, LIH

TWY lights:

Edge: TWY B, B2, E, F, G, H, I, J, N, O, P, Q - blue, LIM.  
CL: inset green lights on TWY K.

RWY	TRUE DIRECTION	THR	BEARING STRENGTH
14L	146.08°	55 54 25N 023 22 46E	120/F/B/W/T
32R	326.11°	55 52 51N 023 24 38E	
14R	146.10°	55 54 15N 023 22 41E	120/F/D/W/T
32L	326.13°	55 52 48N 023 24 25E	



Changes: RWY 14R/32L PCN changed.

SPECIALUSIS TUŠČIAS PUSLAPIS

*THIS PAGE INTENTIONALLY LEFT BLANK*