

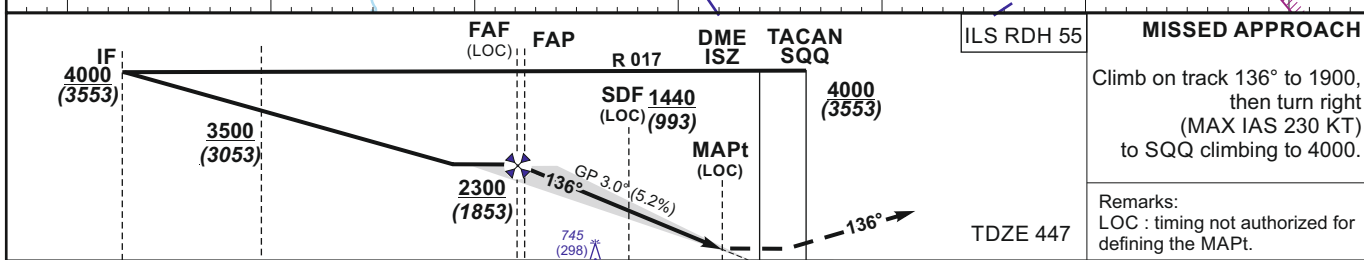
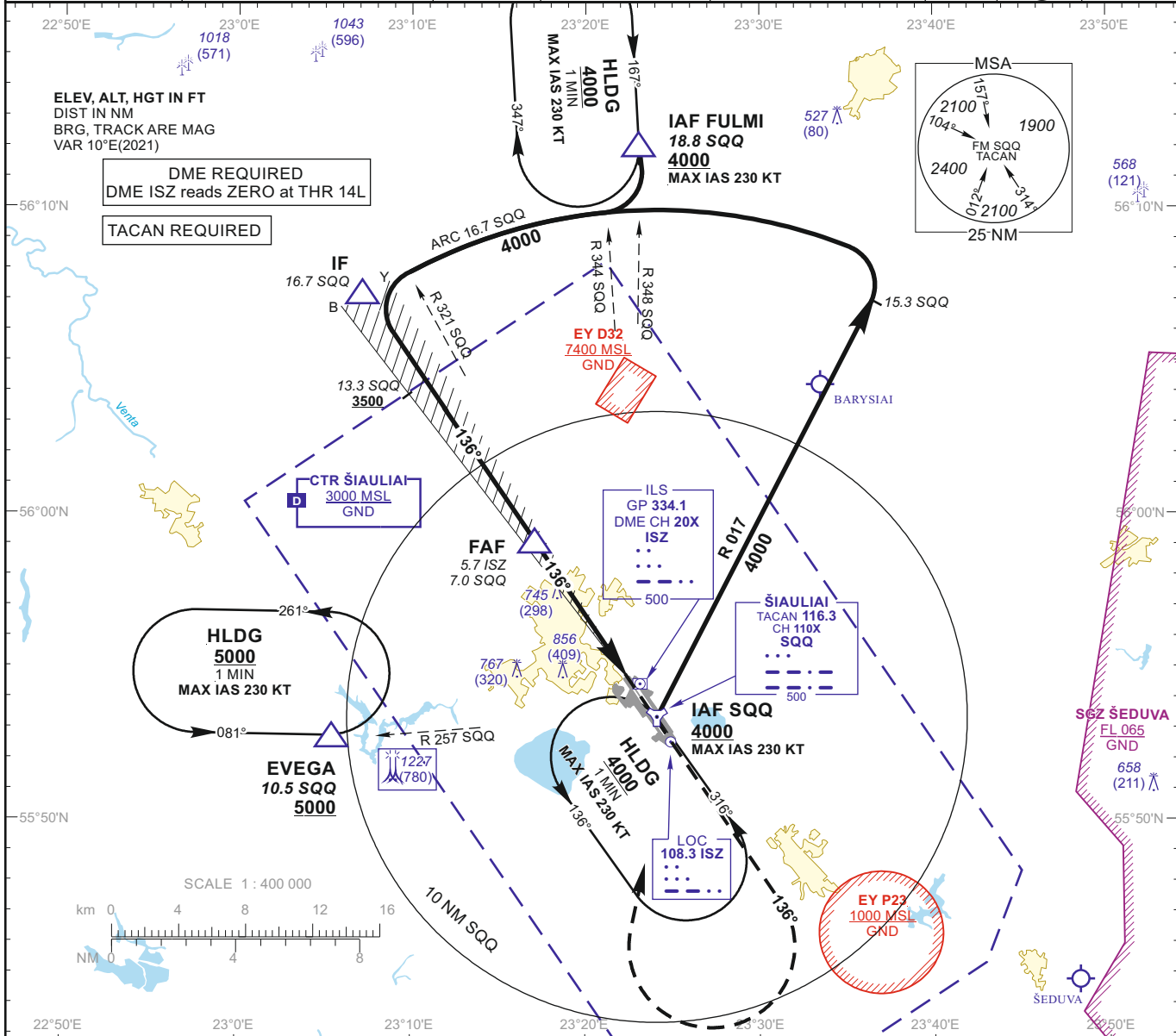
INSTRUMENT APPROACH CHART
 for MILITARY ACFT
 TRANSITION LEVEL By ATC
 TRANSITION ALT **5000(4553)**

AERODROME ELEV 447
 HEIGHTS RELATED TO
 THR RWY 14L - ELEV 447

TWR 120.405
 ATIS 120.755

ŠIAULIAI (EYSA)
ILS Y or LOC Y
RWY 14L (MIL)

TACAN SQQ CH110X	APP COURSE 136°	FAF ALT 2300	Descent GP 3.00° (5.2%)	DA ref. to minimums MDA 830	TDZE 447	ALS (BP)	LDA 11483
---------------------	--------------------	-----------------	----------------------------	---------------------------------------	--------------------	--------------------	---------------------



GS	Kts	80	100	120	140	160	180	DIST ISZ	5	4	3	2	1
FAF - MAPt 5.0 NM	min:sec	3:45	3:00	2:30	2:09	1:53	1:40	Altitude	2080	1760	1440	1130	820
Rate of descent (5.2%)	ft/min	415	520	625	730	835	940	Height	(1633)	(1313)	(993)	(683)	(373)

	STRAIGHT-IN APPROACH									CIRCLING APPROACH		
	ILS CAT I			LOC			LOC (When SDF not received)			MDA(H)	Visibility	
	DA(H)	Full	ALS out	MDA(H)	Full	ALS out	MDA(H)	Full	ALS out			
A										880 (440)	1500m	A
B	647 (200)	RVR 550m	RVR 1200m	830 (380)	RVR 1000m	RVR 1500m	1000 (550)	RVR 2000m	RVR 2700m	1160 (710)	2400m	B
C										1260 (810)	3600m	C
D										1350 (910)	4300m	D
E	651 (204)											E

Changes:

INSTRUMENT APPROACH CHART
for MILITARY ACFT
TRANSITION LEVEL By ATC
TRANSITION ALT **5000(4553)**

AERODROME ELEV 447
HEIGHTS RELATED TO
THR RWY 14L - ELEV 447

TWR 120.405
ATIS 120.755

ŠIAULIAI (EYSA)
ILS Y or LOC Y
RWY 14L (MIL)

TABULAR DESCRIPTION

ILS or LOC INSTRUMENT APPROACH for MILITARY ACFT from IAFs (SQQ, FULMI)		
FIX/POINTS	COORDINATES	FIX FORMATION
EVEGA (HLDG)	55 52.87N 023 05.45E	BRG 077.28° / 10.54 NM SQQ
FULMI (IAF)	56 12.18N 023 23.10E	BRG 168.39° / 18.80 NM SQQ
SQQ TACAN (IAF)	55 53.43N 023 24.14E	
IF	56 07.18N 023 07.41E	BRG 136.33° / 15.42 NM ISZ ; 16.67 NM SQQ
FAF	55 59.14N 023 17.09E	BRG 136.33° / 5.71 NM ISZ ; 6.97 NM SQQ
FAP	55 59.02N 023 17.24E	BRG 136.33° / 5.56 NM ISZ ; 6.82 NM SQQ
SDF	55 56.89N 023 19.80E	BRG 136.33° / 2.99 NM ISZ ; 4.24 NM SQQ
MAPt	55 55.00N 023 22.07E	BRG 136.33° / 0.70 NM ISZ ; 1.96 NM SQQ
THR RWY 14L	55 54.41N 023 22.76E	
DME ISZ	55 54.30N 023 23.04E	
LOC ISZ	55 52.68N 023 24.84E	
Final approach (LOC) descent angle: 3.00°		