

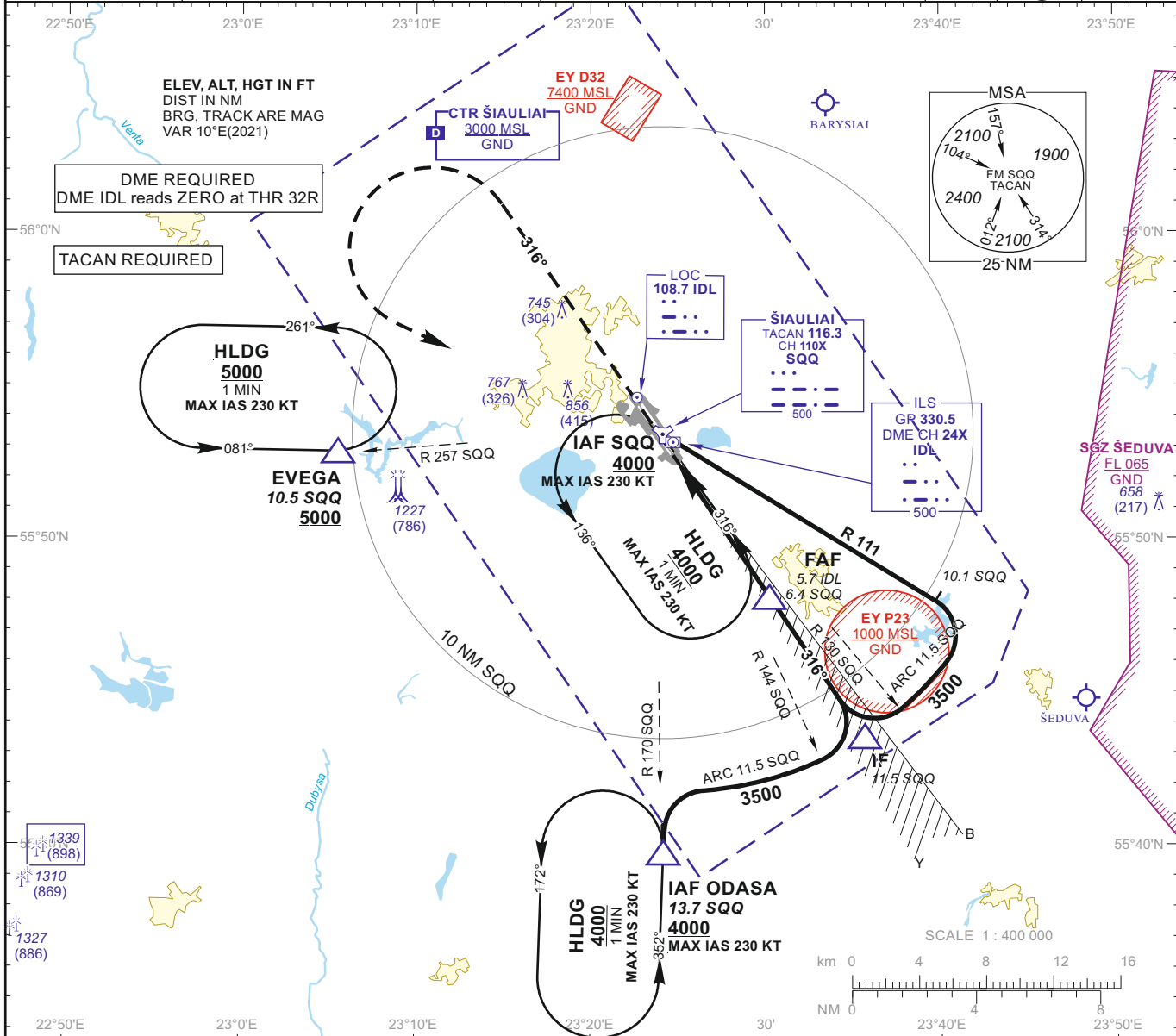
INSTRUMENT APPROACH CHART
 for **MILITARY ACFT**
 TRANSITION LEVEL By ATC
 TRANSITION ALT **5000(4559)**

AERODROME ELEV 447
 HEIGHTS RELATED TO
 THR RWY 32R - ELEV 441

TWR 120.405
 ATIS 120.755

ŠIAULIAI (EYSA)
ILS Y or LOC Y
RWY 32R (MIL)

| | | | | | | | |
|---------------------|--------------------|-----------------|----------------------------|---------------------------------------|--------------------|-------------|---------------------|
| TACAN SQQ CH110X | APP COURSE 316° | FAF ALT 2300 | Descent GP 3.00° (5.2%) | DA ref. to minimums MDA 760 | TDZE 441 | ALS (BP) | LDA 11483 |
|---------------------|--------------------|-----------------|----------------------------|---------------------------------------|--------------------|-------------|---------------------|



MISSED APPROACH

ILS RDH 51

Climb on track 316° to 2000, then turn left with MIN bank angle 20° (MAX IAS 230 KT) to SQQ climbing to 4000.

Remarks:
 LOC : timing not authorized for defining the MAPt.

TDZE 441

| | | | | | | | | | | | | | |
|------------------------|---------|------|------|------|------|------|------|----------|--------|--------|-------|-------|-------|
| GS | Kts | 80 | 100 | 120 | 140 | 160 | 180 | DIST IDL | 5 | 4 | 3 | 2 | 1 |
| FAF - MAPt 5.0 NM | min:sec | 3:45 | 3:00 | 2:30 | 2:09 | 1:53 | 1:40 | Altitude | 2070 | 1750 | 1440 | 1120 | 810 |
| Rate of descent (5.2%) | ft/min | 415 | 520 | 625 | 730 | 835 | 940 | Height | (1629) | (1309) | (999) | (679) | (369) |

| | STRAIGHT-IN APPROACH | | | | | | CIRCLING APPROACH | | |
|---|----------------------|----------|-----------|-----------|----------|-----------|-------------------|------------|---|
| | ILS CAT I | | | LOC | | | MDA(H) | Visibility | |
| | DA(H) | Full | ALS out | MDA(H) | Full | ALS out | | | |
| A | 641 (200) | RVR 550m | RVR 1200m | 760 (320) | RVR 750m | RVR 1400m | 880 (440) | 1500m | A |
| B | | | | | | | 1160 (710) | 2400m | B |
| C | | | | | | | 1260 (810) | 3600m | C |
| D | | | | | | | 1350 (910) | 4300m | D |
| E | 652 (211) | | | | | | | | E |

Changes:

INSTRUMENT APPROACH CHART
for MILITARY ACFT
TRANSITION LEVEL By ATC
TRANSITION ALT **5000(4559)**

AERODROME ELEV 447
HEIGHTS RELATED TO
THR RWY 32R - ELEV 441

TWR 120.405
ATIS 120.755

ŠIAULIAI (EYSA)
ILS Y or LOC Y
RWY 32R (MIL)

TABULAR DESCRIPTION

| ILS or LOC INSTRUMENT APPROACH for MILITARY ACFT from IAFs (SQQ, ODASA) | | |
|---|----------------------|---|
| FIX/POINTS | COORDINATES | FIX FORMATION |
| EVEGA (HLDG) | 55 52.87N 023 05.45E | BRG 077.28° / 10.54 NM SQQ |
| ODASA (IAF) | 56 07.72N 023 24.76E | BRG 350.12° / 13.68 NM SQQ |
| SQQ TACAN (IAF) | 55 53.43N 023 24.14E | |
| IF | 55 43.84N 023 35.35E | BRG 316.25° / 10.87 NM IDL ; 11.50 NM SQQ |
| FAF | 55 48.10N 023 30.30E | BRG 316.25° / 5.73 NM IDL ; 6.37 NM SQQ |
| FAP | 55 48.21N 023 30.16E | BRG 316.25° / 5.59 NM IDL ; 6.23 NM SQQ |
| MAPt | 55 52.27N 023 25.33E | BRG 316.25° / 0.70 NM IDL ; 1.34 NM SQQ |
| THR RWY 32R | 55 52.85N 023 24.64E | |
| DME IDL | 55 53.02N 023 24.58E | |
| LOC IDL | 55 54.58N 023 22.57E | |
| Final approach (LOC) descent angle: 3.00° | | |