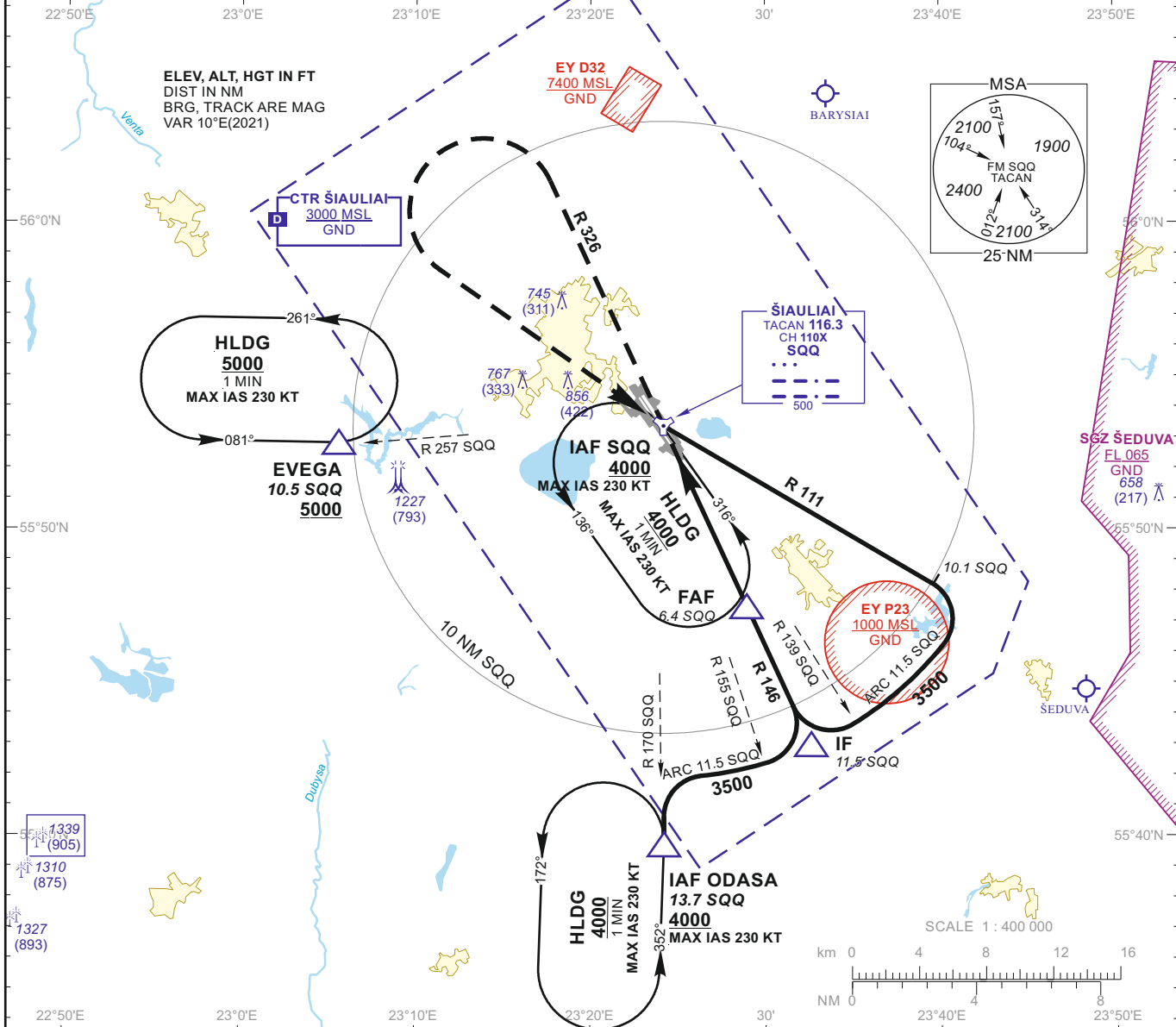
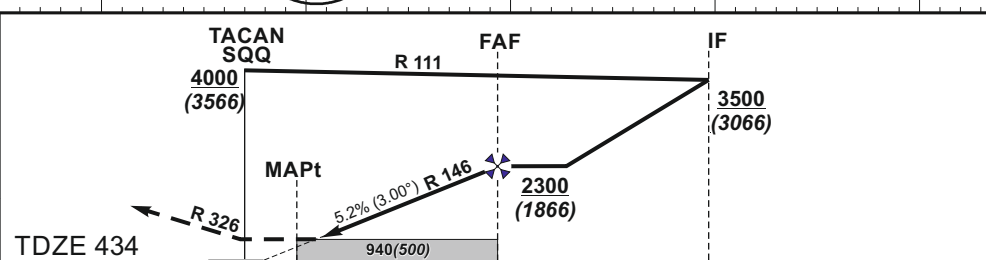


INSTRUMENT APPROACH CHART **AERODROME ELEV 447** **ŠIAULIAI (EYSA) TACAN RWY 32L (MIL)**
 for MILITARY ACFT
 TRANSITION LEVEL By ATC
 TACAN ALT **5000(4566)**
 HEIGHTS RELATED TO
 THR RWY 32L - ELEV 434
 TWR 120.405
 ATIS 120.755

TACAN SQQ CH110X	APP COURSE 326°	FAF ALT 2300	Descent GP 5.2% (3.00°)	MDA 940	TDZE 434	ALS OUT	LDA 10643
---------------------	--------------------	-----------------	----------------------------	---------	-------------	------------	--------------



MISSED APPROACH
 Climb via SQQ, then on R 326 to 2100, then turn left with MIN bank angle 20° (MAX IAS 230 KT) to SQQ climbing to 4000.
 Remarks:
 Timing not authorized for defining the MAPt.



GS	Kts	80	100	120	140	160	180	DIST SQQ	6	5	4	3	2
FAF - MAPt 5.0 NM	min:sec	3:45	3:00	2:30	2:09	1:53	1:40	Altitude	2180	1870	1550	1240	920
Rate of descent (5.2%)	ft/min	415	520	625	730	835	940	Height	(1746)	(1436)	(1116)	(806)	(486)

	STRAIGHT-IN APPROACH			CIRCLING APPROACH		
	TACAN			MDA(H)	Visibility	
	MDA(H)	Full	ALS out			
A	940 (500)			880 (440)	1500m	A
B		RVR 1500m	RVR 1500m	1160 (710)	2400m	B
C				1260 (810)	3600m	C
D		RVR 1900m	RVR 2700m	1350 (910)	4300m	D
E						E

Changes:

INSTRUMENT APPROACH CHART
for MILITARY ACFT
TRANSITION LEVEL By ATC
TRANSITION ALT **5000(4566)**

AERODROME ELEV 447
HEIGHTS RELATED TO
THR RWY 32L - ELEV 434

TWR 120.405
ATIS 120.755

ŠIAULIAI (EYSA)
TACAN
RWY 32L (MIL)

TABULAR DESCRIPTION

TACAN INSTRUMENT APPROACH for MILITARY ACFT from IAFs (SQQ, ODASA)		
FIX/POINTS	COORDINATES	FIX FORMATION
EVEGA (HLDG)	55 52.87N 023 05.45E	BRG 077.28° / 10.54 NM SQQ
ODASA (IAF)	56 07.72N 023 24.76E	BRG 350.12° / 13.68 NM SQQ
SQQ TACAN (IAF)	55 53.43N 023 24.14E	
IF	55 42.98N 023 32.58E	BRG 325.67° / 11.50 NM SQQ
FAF	55 47.63N 023 28.83E	BRG 325.67° / 6.38 NM SQQ
MAPt	55 52.17N 023 25.17E	BRG 325.67° / 1.39 NM SQQ
THR RWY 32L	55 52.80N 023 24.42E	
Final approach descent angle: 3.00°		