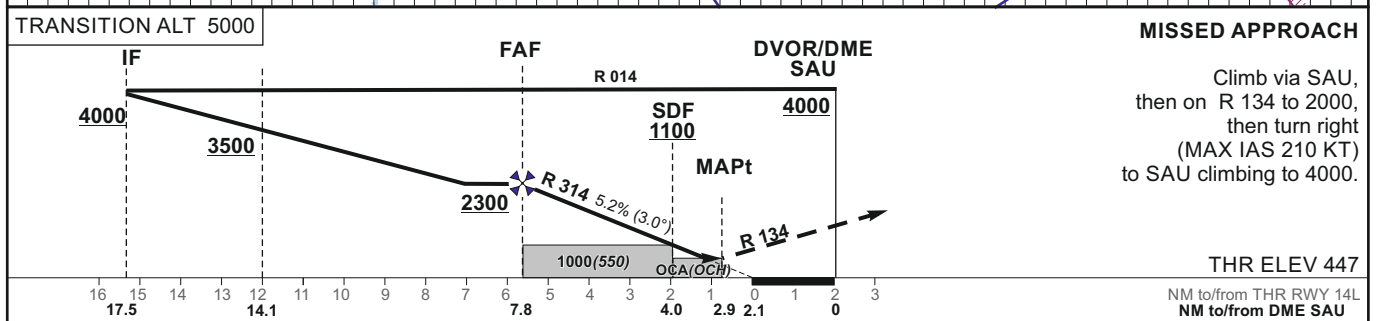
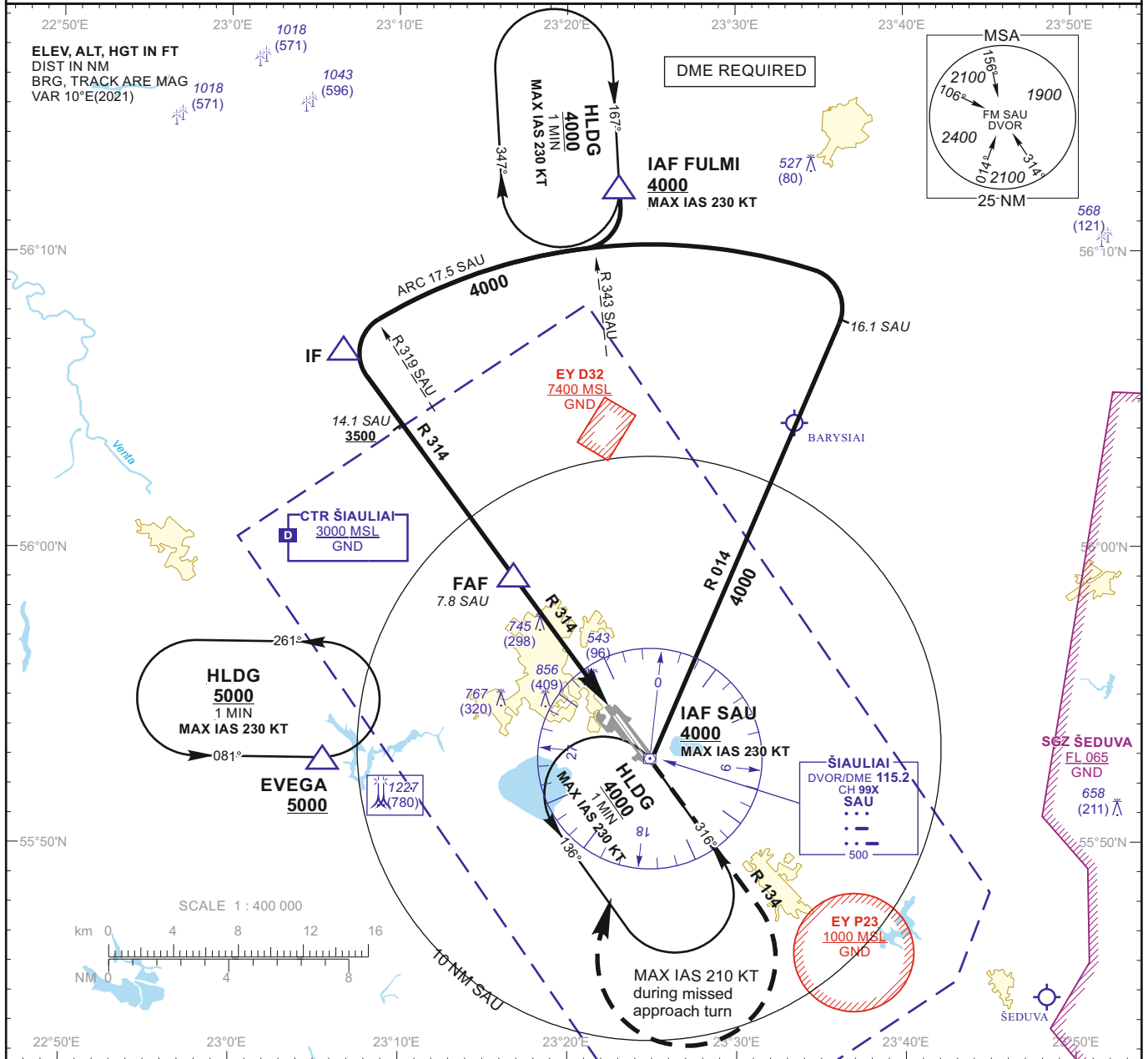


INSTRUMENT APPROACH CHART - ICAO

AERODROME ELEV 447
 HEIGHTS RELATED TO
 THR RWY 14L - ELEV 447

TWR 120.405
 ATIS 120.755

**ŠIAULIAI (EYSA)
 VOR RWY 14L
 (CAT A/B/C/D)**



OCA(OCH)	STRAIGHT-IN APPROACH	DIST DME SAU				MISSED APPROACH				
		A	B	C	D	7	6	5	4	
VOR	840 (390)					Altitude	2050	1740	1420	1110
VOR (when SDF not received)	1000 (550)					Height	(1603)	(1293)	(973)	(653)
CIRCLING	880 (440)	1160 (710)	1260 (810)		Timing not authorized for defining the MAPt					
GS		Kts		80	100	120	140	160	180	
FAF - MAPt 4.9 NM		min:sec		3:40	2:56	2:27	2:06	1:50	1:38	
Rate of descent (5.2%)		ft/min		415	520	625	730	835	940	

For data tabulation see verso

Changes:

INSTRUMENT
APPROACH
CHART - ICAO

AERODROME ELEV 447
HEIGHTS RELATED TO
THR RWY 14L - ELEV 447

TWR 120.405
ATIS 120.755

ŠIAULIAI (EYSA)
VOR RWY 14L
(CAT A/B/C/D)

TABULAR DESCRIPTION

VOR INSTRUMENT APPROACH from IAFs (SAU, FULMI)		
FIX/POINTS	COORDINATES	FIX FORMATION
EVEGA (HLDG)	55 52 52.4N 023 05 27.0E	BRG 080.98° / 11.00 NM SAU
FULMI (IAF)	56 12 11.0N 023 23 06.0E	BRG 167.08° / 19.51 NM SAU
SAU (IAF)	55 52 44.6N 023 24 59.0E	
IF	56 06 52.1N 023 06 38.0E	BRG 134.24° / 17.50 NM SAU
FAF	55 59 02.5N 023 16 49.9E	BRG 134.24° / 7.80 NM SAU
SDF	55 55 58.5N 023 20 48.5E	BRG 134.24° / 4.00 NM SAU
MAPt	55 55 04.2N 023 21 58.8E	BRG 134.24° / 2.88 NM SAU
THR RWY 14L	55 54 24.88N 023 22 45.78E	
Final approach descent angle: 3.00°		