

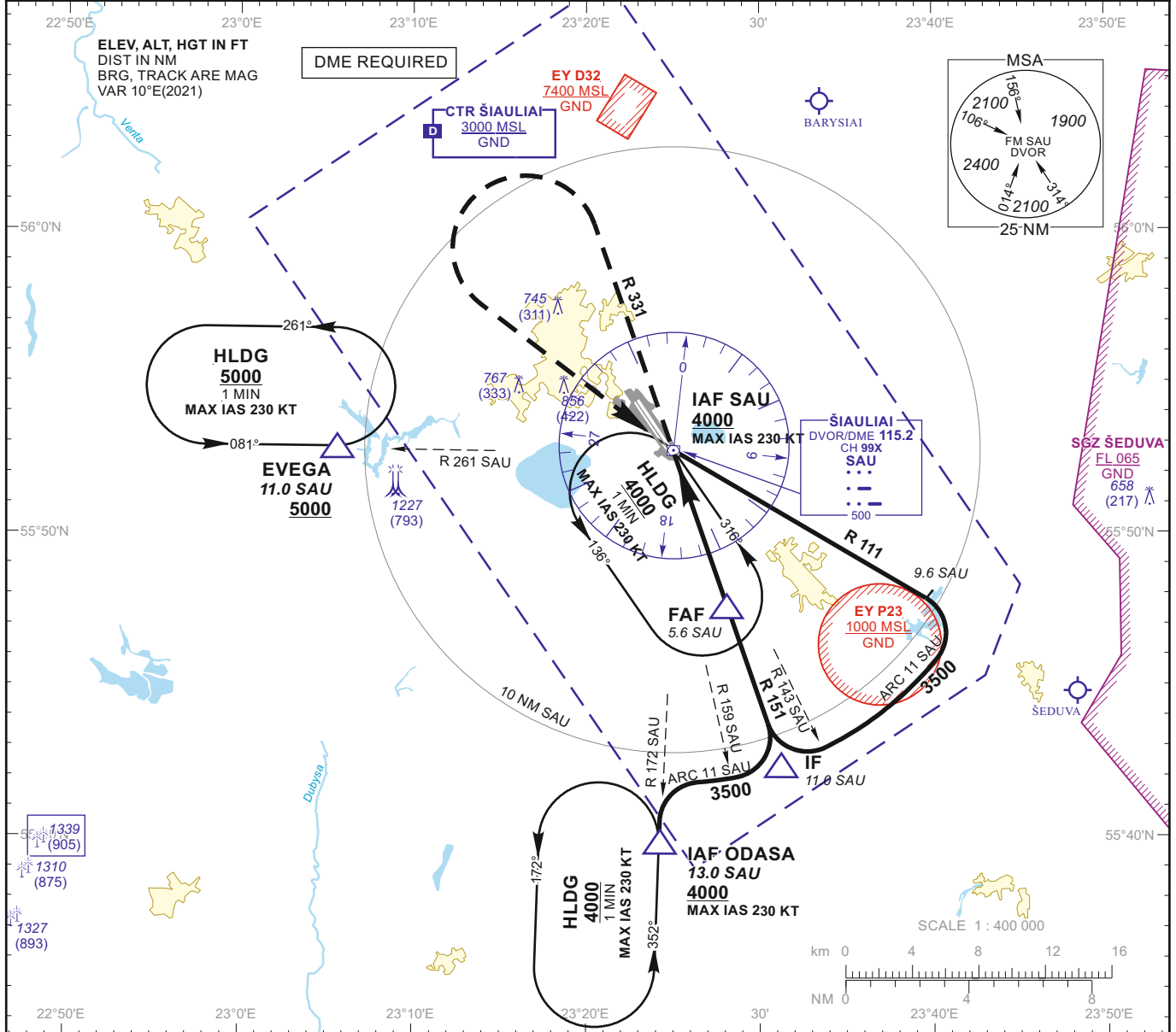
INSTRUMENT APPROACH CHART
for MILITARY ACFT
 TRANSITION LEVEL By ATC
 TRANSITION ALT **5000(4566)**

AERODROME ELEV 447
 HEIGHTS RELATED TO
 THR RWY 32L - ELEV 434

TWR 120.405
 ATIS 120.755

**ŠIAULIAI (EYSA)
 VOR
 RWY 32L (MIL)**

DVOR/DME SAU CH99X	APP COURSE 331°	FAF ALT 2300	Descent GP 5.2% (3.00°)	MDA 1050	TDZE 434	ALS OUT	LDA 10643
-----------------------	--------------------	-----------------	----------------------------	----------	-------------	------------	--------------



MISSED APPROACH

Climb via SAU, then on R 331 to 2000, then turn left with MIN bank angle 20° (MAX IAS 230 KT) to SAU climbing to 4000.

Remarks:
Timing not authorized for defining the MAPt.

DVOR/DME SAU

4000 (3566)

FAF

IF

3500 (3066)

MAPt

R 111

R 151

2300 (1866)

5.2% (3.00°)

R 331

1050(610)

TDZE 434

NM to/from THR RWY 32L	3	2	1	0	0.9	2	3	4	5	6	7	8	9	10	11	12	13	14	15	16
NM to/from DME SAU																				

GS	Kts	80	100	120	140	160	180	DIST SAU	5	4	3	2
FAF - MAPt 4.7 NM	min:sec	3:31	2:49	2:21	2:01	1:46	1:34	Altitude	2130	1810	1500	1180
Rate of descent (5.2%)	ft/min	415	520	625	730	835	940	Height	(1696)	(1376)	(1066)	(746)

	STRAIGHT-IN APPROACH			CIRCLING APPROACH		
	VOR			MDA(H)	Visibility	
	MDA(H)	Full	ALS out			
A	1050 (610)			880 (440)	1500m	A
B		RVR 2300m	RVR 3000m	1160 (710)	2400m	B
C				1260 (810)	3600m	C
D		RVR 2500m	RVR 3200m	1350 (910)	4300m	D
E						E

Changes:

INSTRUMENT APPROACH CHART
for **MILITARY ACFT**
TRANSITION LEVEL By ATC
TRANSITION ALT **5000(4566)**

AERODROME ELEV 447
HEIGHTS RELATED TO
THR RWY 32L - ELEV 434

TWR 120.405
ATIS 120.755

ŠIAULIAI (EYSA)
VOR
RWY 32L (MIL)

TABULAR DESCRIPTION

VOR INSTRUMENT APPROACH for MILITARY ACFT from IAFs (SAU, ODASA)		
FIX/POINTS	COORDINATES	FIX FORMATION
EVEGA (HLDG)	55 52.87N 023 05.45E	BRG 080.98° / 11.00 NM SAU
ODASA (IAF)	56 07.72N 023 24.76E	BRG 352.21° / 13.00 NM SAU
SAU (IAF)	55 52.74N 023 24.98E	
IF	55 42.35N 023 31.27E	BRG 331.31° / 11.00 NM SAU
FAF	55 47.49N 023 28.17E	BRG 331.31° / 5.56 NM SAU
MAPt	55 51.88N 023 25.51E	BRG 331.31° / 0.91 NM SAU
THR RWY 32L	55 52.80N 023 24.42E	
Final approach descent angle: 3.00°		