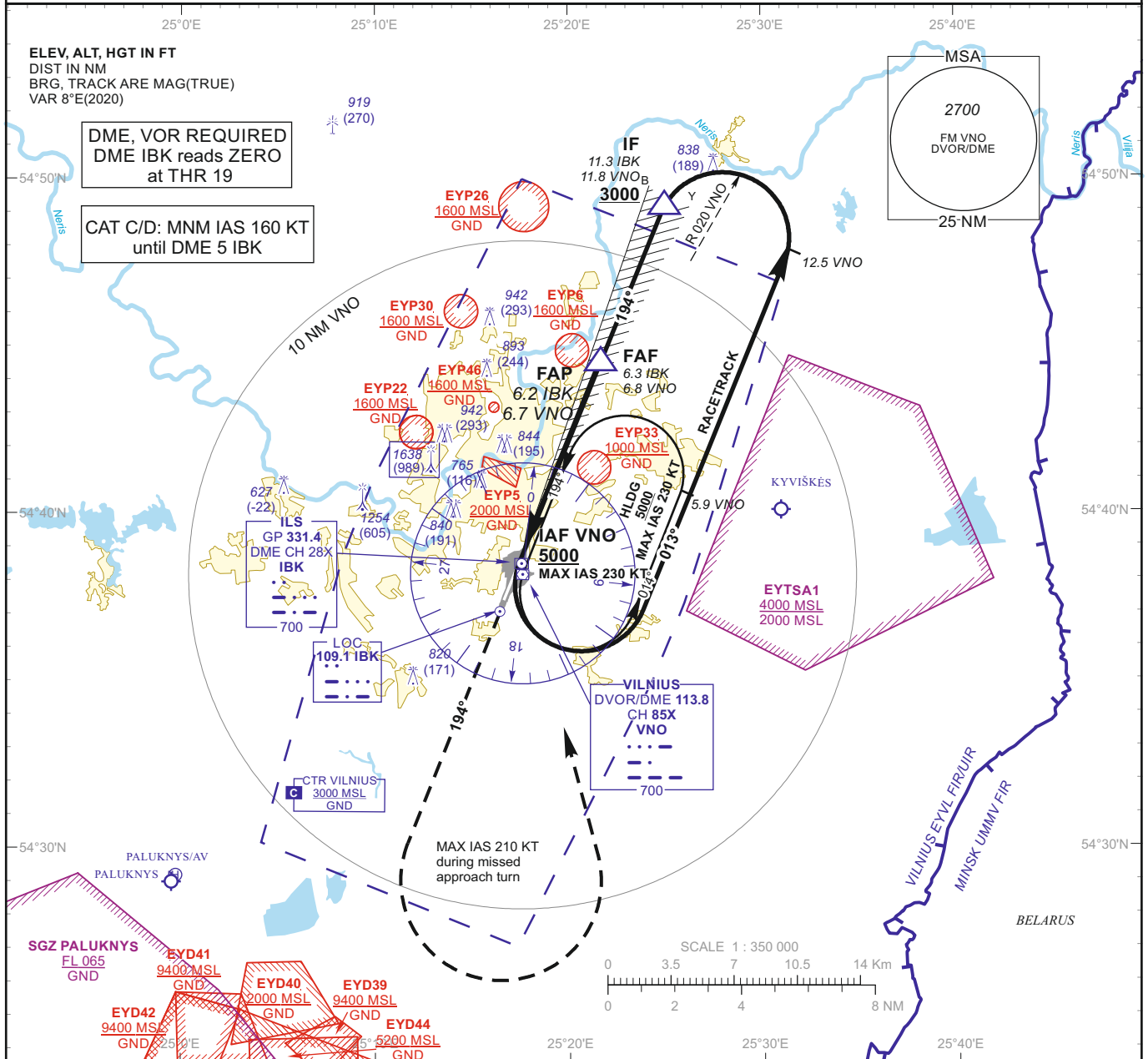


INSTRUMENT APPROACH CHART - ICAO

AERODROME ELEV 649
HEIGHTS RELATED TO THR RWY 19 - ELEV 649

APP 120.705
TWR 118.205
ATIS 125.805

VILNIUS (EYVI)
ILS Y or LOC RWY 19
(CAT A/B/C/D)



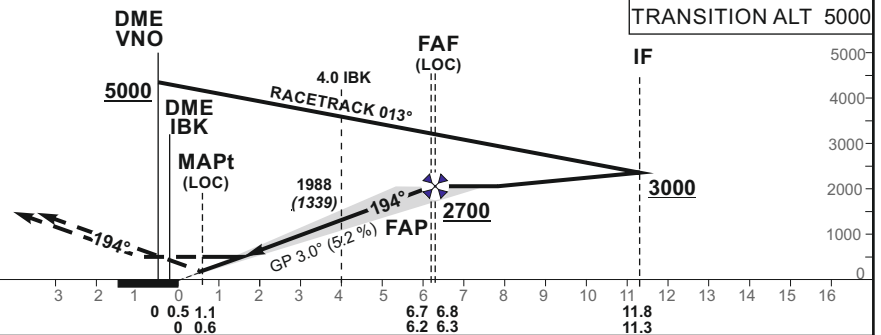
MISSED APPROACH

Climb on track 194° to 2400, then turn left (MAX IAS 210 KT) to VNO climbing to 5000.

ILS RDH 51

THR ELEV 649

NM to/from THR RWY 19
NM to/from DME VNO
NM to/from DME IBK



OCA(OCH)	A	B	C	D	DIST DME IBK	6	5	4	3	2	
STRAIGHT-IN APPROACH	ILS CAT I	917 (268)	930 (281)	938 (289)	948 (299)	Altitude	2650	2320	1990	1670	1340
	LOC	1050 (400)				Height	(2001)	(1671)	(1341)	(1021)	(691)
CIRCLING	NOT AUTHORIZED					LOC : timing not authorized for defining the MAPt					
	GS	Kts	80	100	120	140	160	180			
	FAF - MAPt 5.7 NM	min:sec	4:16	3:25	2:51	2:26	2:08	1:54			
	Rate of descent (5.2%)	ft/min	415	520	625	730	835	940			

For data tabulation see verso

Changes: EYP45 withdrawn; EYP46 added; ALT FM DME IBK.

**INSTRUMENT
APPROACH
CHART - ICAO**

AERODROME ELEV 649
HEIGHTS RELATED TO
THR RWY 19 - ELEV 649

**VILNIUS (EYVI)
ILS Y or LOC RWY 19
(CAT A/B/C/D)**

TABULAR DESCRIPTION

ILS or LOC INSTRUMENT APPROACH from IAF (VNO)		
FIX/POINTS	COORDINATES	FIX FORMATION
VNO (IAF)	54 38 09.8N 025 17 37.1E	
IF	54 49 10.7N 025 24 53.9E	BRG 192.63° / 11.81 NM VNO ; BRG 193.64° / 11.34 NM IBK
FAF	54 44 32.9N 025 21 39.8E	BRG 191.88° / 6.81 NM VNO ; BRG 193.64° / 6.34 NM IBK
FAP	54 44 24.0N 025 21 33.6E	BRG 191.84° / 6.65 NM VNO ; BRG 193.64° / 6.18 NM IBK
MAPt	54 39 14.1N 025 17 58.1E	BRG 182.49° / 1.09 NM VNO ; BRG 193.64° / 0.60 NM IBK
THR RWY 19	54 38 40.73N 025 17 34.99E	
LOC IBK	54 36 59.4N 025 16 24.8E	
DME IBK	54 38 29.0N 025 17 34.2E	
Final approach (LOC) descent angle: 3.00°		