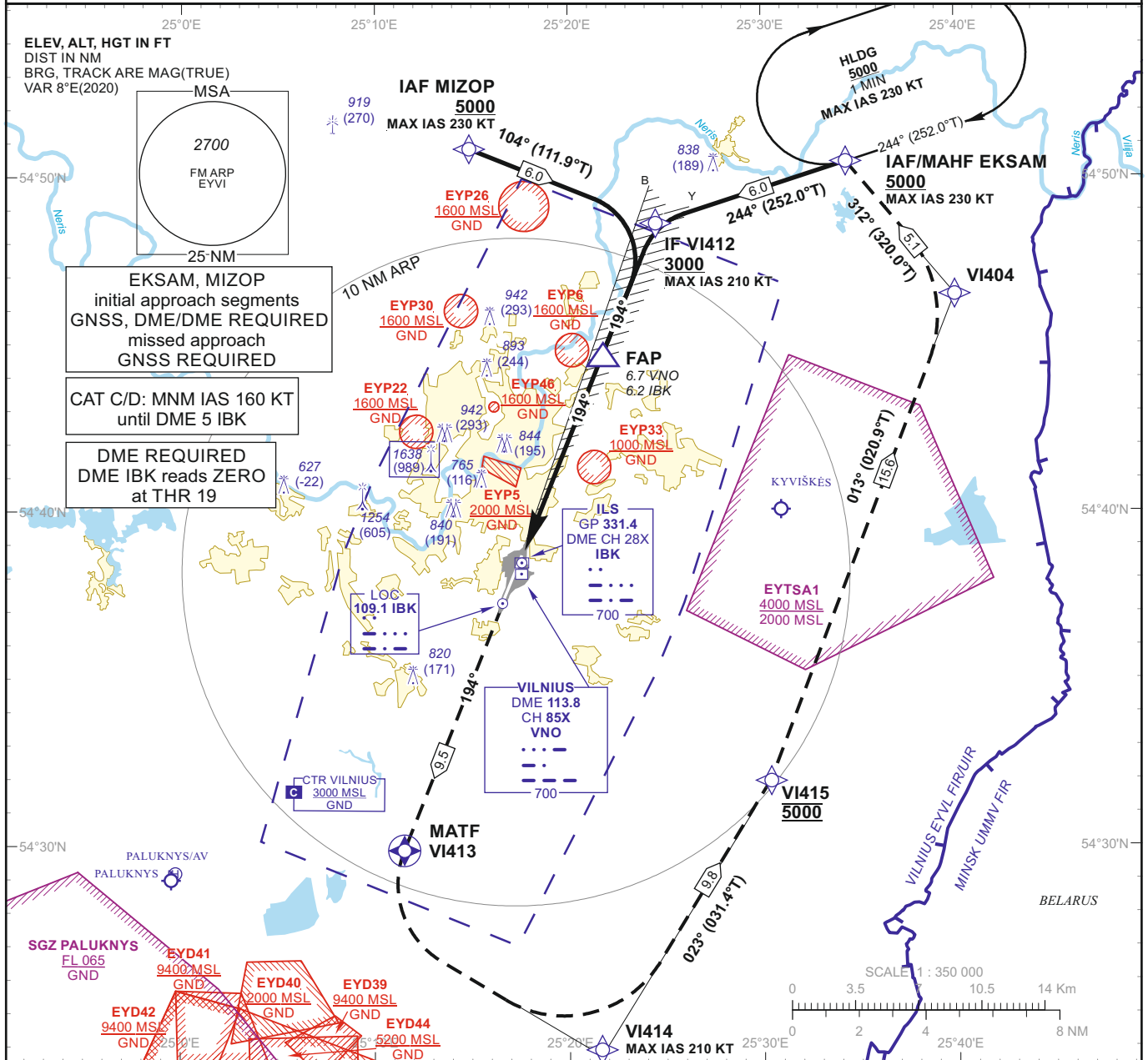


INSTRUMENT APPROACH CHART - ICAO

AERODROME ELEV 649
HEIGHTS RELATED TO THR RWY 19 - ELEV 649

APP 120.705
TWR 118.205
ATIS 125.805

VILNIUS (EYVI) ILS Z RWY 19 (CAT A/B/C/D)



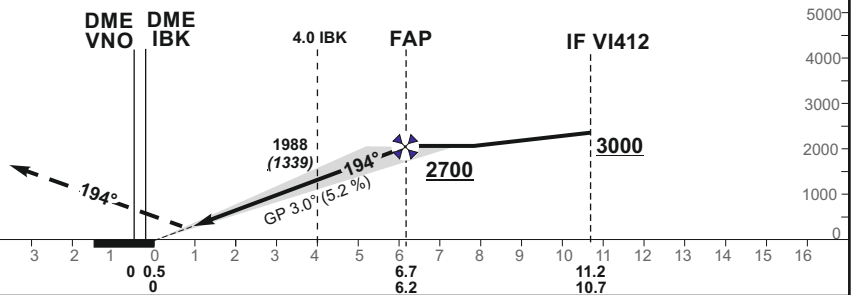
MISSED APPROACH

Climb on course 194° to VI413, then turn left, direct to VI414[K210-], then on track 023° to VI415[A5000], then on track 013° to VI404, then on track 312° to EKSAM[A5000+;K230-].

ILS RDH 51

THR ELEV 649

NM to/from THR RWY 19
NM to/from DME VNO
NM to/from DME IBK



TRANSITION ALT 5000

| OCA(OCH) | A | B | C | D | DIST DME IBK | 6 | 5 | 4 | 3 | 2 | | | |
|----------------------|----------------|-----------|-----------|-----------|--------------|------------------------|---------|--------|--------|--------|-------|------|------|
| STRAIGHT-IN APPROACH | ILS CAT I | 917 (268) | 930 (281) | 938 (289) | 948 (299) | Altitude | 2650 | 2320 | 1990 | 1670 | 1340 | | |
| | | | | | | Height | (2001) | (1671) | (1341) | (1021) | (691) | | |
| CIRCLING | NOT AUTHORIZED | | | | | | | | | | | | |
| | | | | | | GS | Kts | 80 | 100 | 120 | 140 | 160 | 180 |
| | | | | | | FAP - THR 6.2 NM | min:sec | 4:39 | 3:43 | 3:06 | 2:39 | 2:20 | 2:04 |
| | | | | | | Rate of descent (5.2%) | ft/min | 415 | 520 | 625 | 730 | 835 | 940 |

For data tabulation see verso

Changes: EYP45 withdrawn; EYP46 added; ALT FM DME IBK; note.

**INSTRUMENT
APPROACH
CHART - ICAO**
AERODROME ELEV 649
 HEIGHTS RELATED TO
 THR RWY 19 - ELEV 649

**VILNIUS (EYVI)
ILS Z RWY 19
(CAT A/B/C/D)**
TABULAR DESCRIPTION

| Serial Number | Path Descriptor | Waypoint Identifier | Fly-over | Course/Track °M(°T) | Magnetic Variation | Distance (NM)/ Time | Turn Direction | Altitude (FT)/ Flight level | Speed (KT) | VPA/TCH | Navigation Specification |
|------------------------------------|-----------------|---------------------|----------|---------------------|--------------------|---------------------|----------------|-----------------------------|------------|---------|--------------------------|
| IAF EKSAM, INITIAL APPROACH | | | | | | | | | | | |
| 001 | IF | EKSAM | — | — | 8.3 | — | — | +5000 | -230 | — | RNAV 1 |
| 002 | TF | VI412 | — | 244(252.0) | 8.3 | 6.0 | — | +3000 | -210 | — | RNAV 1 |
| IAF MIZOP, INITIAL APPROACH | | | | | | | | | | | |
| 001 | IF | MIZOP | — | — | 8.3 | — | — | +5000 | -230 | — | RNAV 1 |
| 002 | TF | VI412 | — | 104(111.9) | 8.3 | 6.0 | — | +3000 | 210 | — | RNAV 1 |
| MISSED APPROACH | | | | | | | | | | | |
| 001 | — | RW19 | — | — | 8.3 | — | — | — | — | — | RNAV 1 |
| 002 | CF | VI413 | Y | 194(201.8) | 8.3 | 9.50 | — | — | — | — | RNAV 1 |
| 003 | DF | VI414 | — | — | 8.3 | — | L | — | -210 | — | RNAV 1 |
| 004 | TF | VI415 | — | 023(031.5) | 8.3 | 9.8 | — | @5000 | — | — | RNAV 1 |
| 005 | TF | VI404 | — | 011(021.1) | 8.3 | 15.6 | — | — | — | — | RNAV 1 |
| 006 | TF | EKSAM | — | 312(320.0) | 8.3 | 5.1 | — | +5000 | -230 | — | RNAV 1 |
| 007 | HM | EKSAM | — | 244(252.0) | 8.3 | 1 min | R | +5000 | -230 | — | RNAV 1 |

| FIX/POINTS | COORDINATES | FIX FORMATION |
|------------------|----------------------------|---|
| VNO | 54 38 09.8N 025 17 37.1E | |
| EKSAM (IAF/MAHF) | 54 50 28.1N 025 34 22.5E | |
| MIZOP (IAF) | 54 50 51.1N 025 14 52.6E | |
| VI412 (IF) | 54 48 37.4N 025 24 30.6E | 11.22 NM VNO ; BRG 193.64° / 10.74 NM IBK |
| FAP | 54 44 24.0N 025 21 33.6E | 6.65 NM VNO ; BRG 193.64° / 6.18 NM IBK |
| RW19 | 54 38 40.73N 025 17 34.99E | |
| VI413 (MATF) | 54 29 52.5N 025 11 30.2E | |
| VI414 | 54 23 40.3N 025 21 37.7E | |
| VI415 | 54 32 01.1N 025 30 23.8E | |
| VI404 | 54 46 34.0N 025 40 02.2E | |
| LOC IBK | 54 36 59.4N 025 16 24.8E | |
| DME IBK | 54 38 29.0N 025 17 34.2E | |