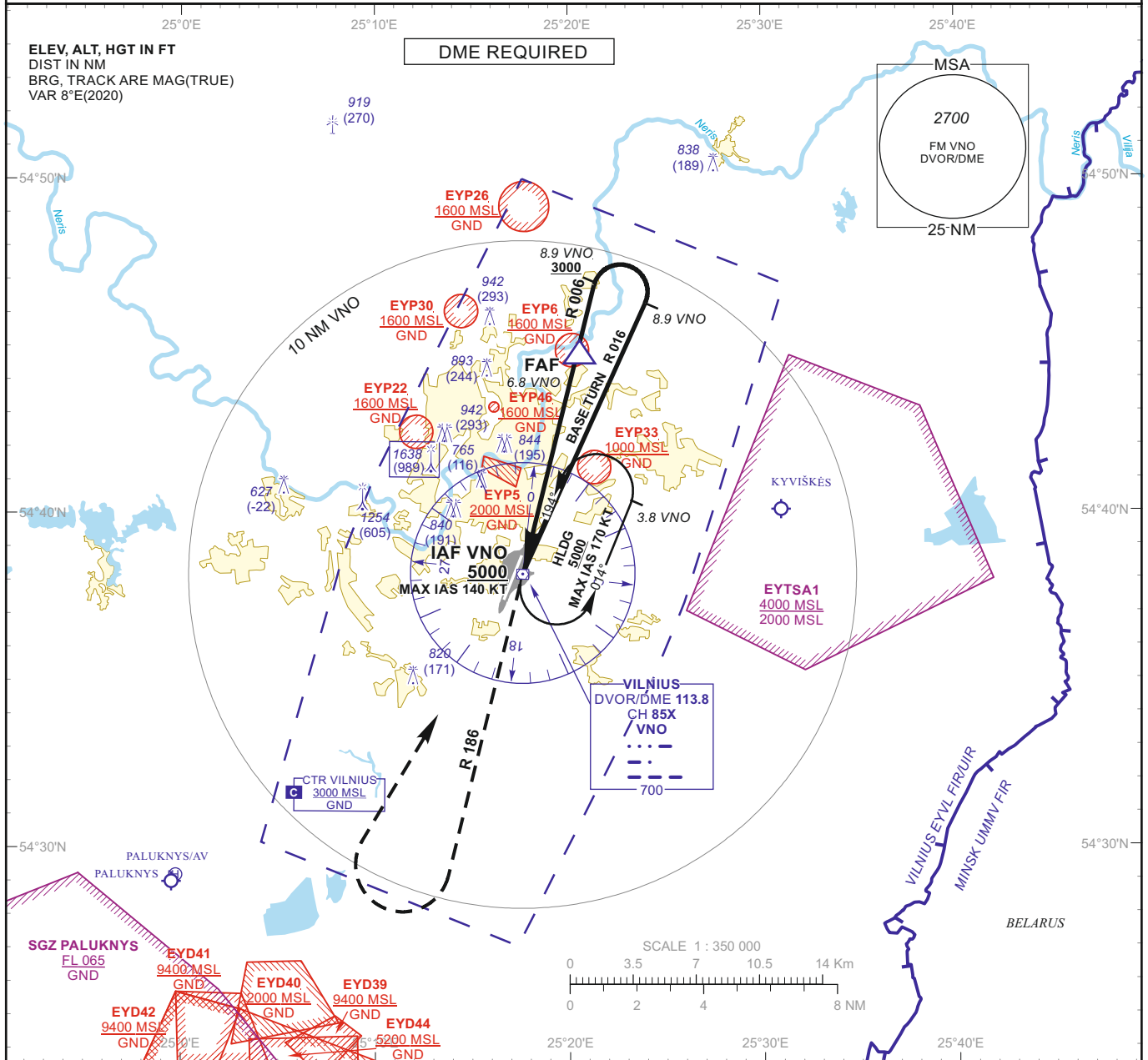


**INSTRUMENT APPROACH CHART - ICAO**

**AERODROME ELEV 649**  
HEIGHTS RELATED TO THR RWY 19 - ELEV 649

APP 120.705  
TWR 118.205  
ATIS 125.805

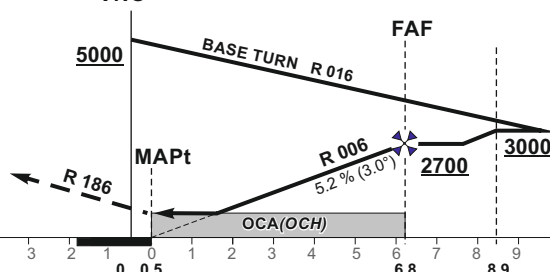
**VILNIUS (EYVI)**  
**VOR Z RWY 19**  
**(CAT A/B)**



**MISSED APPROACH**

Climb via VNO on R 186 to 3000, then turn right to VNO climbing to 5000. Climb with 3.6% or more until passing 3000 due to airspace restriction. When MACG 3.6% not possible, report ATC immediately.

**DVOR/DME VNO**



TRANSITION ALT 5000

THR ELEV 649

NM to/from THR RWY 19  
NM to/from DME VNO

OCA(OCH)	VOR	A		B		DIST DME VNO							
		1190 (540)				6	5	4	3	2			
STRAIGHT-IN APPROACH	VOR	1190 (540)				Altitude	2450	2130	1810	1500	1190		
						Height	(1801)	(1481)	(1161)	(851)	(541)		
CIRCLING		NOT AUTHORIZED				Timing not authorized for defining the MAPt							
						GS	Kts	80	100	120	140	160	180
						FAF-MAPt 6.3 NM	min:sec	4:44	3:47	3:09	2:42	2:22	2:06
						Rate of descent (5.2%)	ft/min	415	520	625	730	835	940

For data tabulation see verso

Changes: EYP45 withdrawn; EYP46 added.

**INSTRUMENT  
APPROACH  
CHART - ICAO**
**AERODROME ELEV 649**  
 HEIGHTS RELATED TO  
 THR RWY 19 - ELEV 649

**VILNIUS (EYVI)  
VOR Z RWY 19  
(CAT A/B)**
**TABULAR DESCRIPTION**
**VOR INSTRUMENT APPROACH from IAF(VNO)**

<b>FIX/POINTS</b>	<b>COORDINATES</b>	<b>FIX FORMATION</b>
VNO (IAF)	54 38 09.8N 025 17 37.1E	
FAF	54 44 46.3N 025 20 28.0E	BRG 185.75° / 6.82 NM VNO
MAPt	54 38 38.1N 025 17 49.2E	BRG 185.75° / 0.49 NM VNO
THR RWY 19	54 38 40.73N 025 17 34.99E	
Final approach descent angle: 3.00°		