

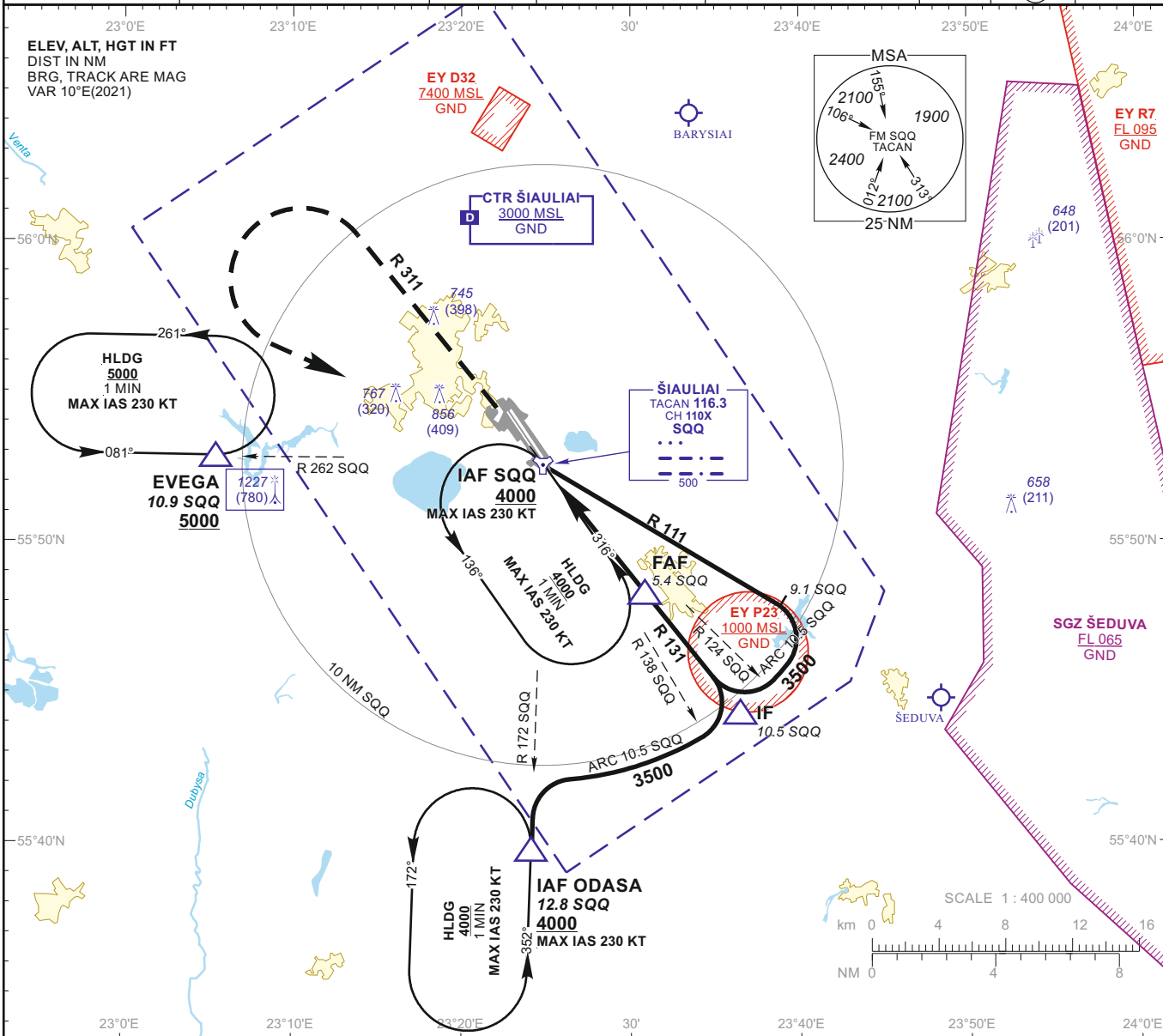
INSTRUMENT APPROACH CHART
for MILITARY ACFT
TRANSITION LEVEL By ATC
TRANSITION ALT **5000(4553)**

AERODROME ELEV 447
HEIGHTS RELATED TO AD ELEV
THR RWY 32R - ELEV 441

TWR 120.405
ATIS 120.755

ŠIAULIAI (EYSA)
TACAN
RWY 32R (MIL)

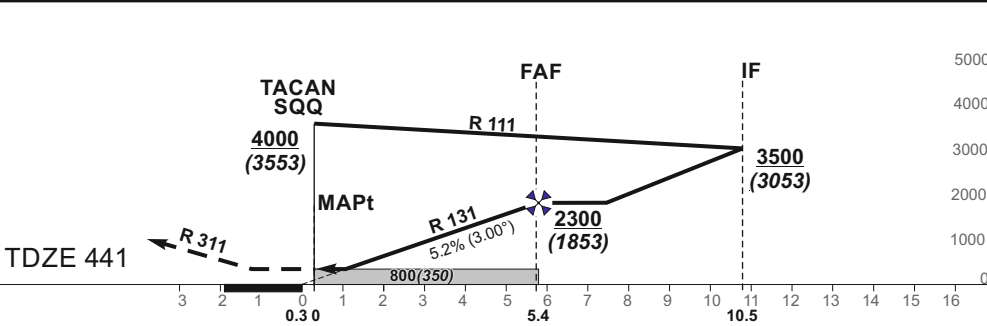
| | | | | | | | |
|---------------------|--------------------|-----------------|----------------------------|---------|-------------|-------------|--------------|
| TACAN SQQ CH110X | APP COURSE 311° | FAF ALT 2300 | Descent GP 5.2% (3.00°) | MDA 800 | TDZE 441 | ALS (BP) | LDA 11483 |
|---------------------|--------------------|-----------------|----------------------------|---------|-------------|-------------|--------------|



MISSED APPROACH

Climb via SQQ, then on R 311 to 2100, then turn left with MIN bank angle 20° (MAX IAS 230 KT) to SQQ climbing to 4000.

Remarks:
Timing not authorized for defining the MAPt.



| | | | | | | | | | | | | | |
|------------------------|---------|------|------|------|------|------|------|----------|--------|--------|--------|-------|-------|
| GS | Kts | 80 | 100 | 120 | 140 | 160 | 180 | DIST SQQ | 5 | 4 | 3 | 2 | 1 |
| FAF - MAPt 5.4 NM | min:sec | 4:03 | 3:14 | 2:42 | 2:19 | 2:02 | 1:48 | Altitude | 2170 | 1850 | 1540 | 1220 | 910 |
| Rate of descent (5.2%) | ft/min | 415 | 520 | 625 | 730 | 835 | 940 | Height | (1723) | (1403) | (1093) | (773) | (463) |

| | STRAIGHT-IN APPROACH | | | CIRCLING APPROACH | | |
|---|----------------------|-----------|-----------|-------------------|------------|---|
| | TACAN | | ALS out | MDA(H) | Visibility | |
| | MDA(H) | Full | | | | |
| A | 800 (350) | RVR 1500m | RVR 2400m | 880 (440) | 1500m | A |
| B | | | | 1160 (710) | 2400m | B |
| C | | | | 1260 (810) | 3600m | C |
| D | | | | 1350 (910) | 4300m | D |
| E | | | | | | |

INSTRUMENT APPROACH CHART
for MILITARY ACFT
TRANSITION LEVEL By ATC
TRANSITION ALT **5000(4553)**

AERODROME ELEV 447
HEIGHTS RELATED TO AD ELEV
THR RWY 32R - ELEV 441

ŠIAULIAI (EYSA)
TACAN
RWY 32R (MIL)

TABULAR DESCRIPTION

| TACAN INSTRUMENT APPROACH for MILITARY ACFT from IAFs (SQQ, ODASA) | | |
|--|----------------------|----------------------------|
| FIX/POINTS | COORDINATES | FIX FORMATION |
| EVEGA (HLDG) | 55 52.87N 023 05.45E | BRG 082.01° / 10.91 NM SQQ |
| ODASA (IAF) | 56 07.72N 023 24.76E | BRG 351.79° / 12.80 NM SQQ |
| SQQ TACAN (IAF) | 55 52.54N 023 24.81E | |
| IF | 55 44.36N 023 36.45E | BRG 311.37° / 10.50 NM SQQ |
| FAF | 55 48.32N 023 30.83E | BRG 311.37° / 5.43 NM SQQ |
| MAPt | 55 52.54N 023 24.81E | |
| THR RWY 32R | 55 52.85N 023 24.64E | |
| Final approach descent angle: 3.00° | | |