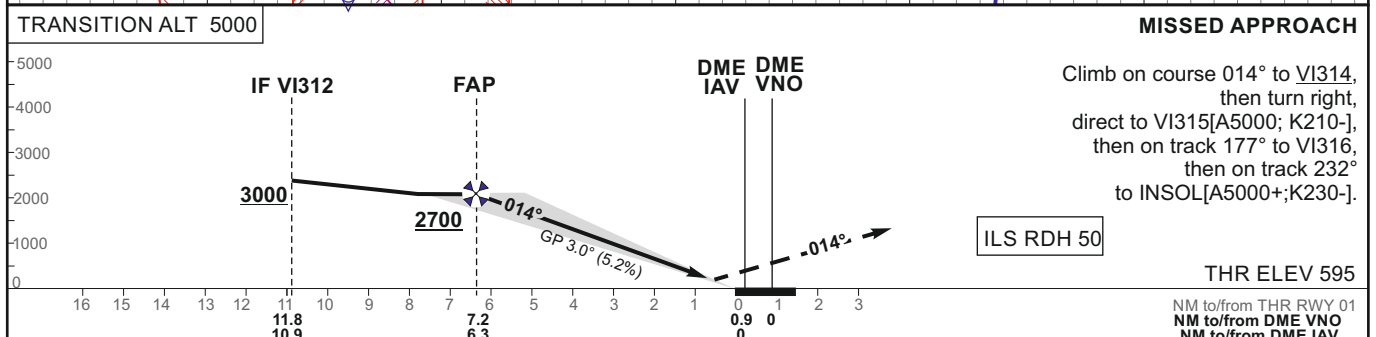
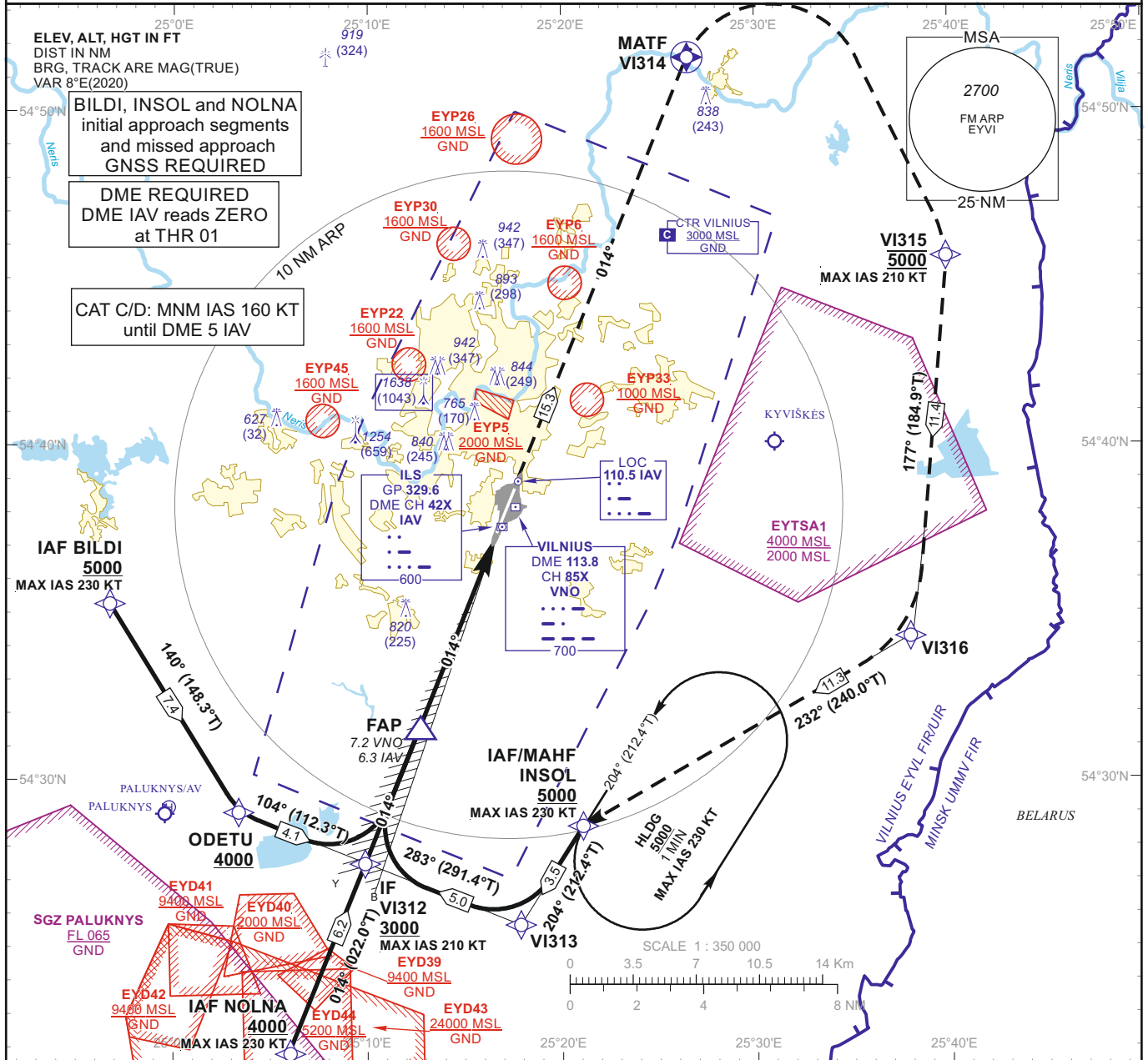


**INSTRUMENT APPROACH CHART - ICAO**

**AERODROME ELEV 649**  
 HEIGHTS RELATED TO  
 THR RWY 01 - ELEV 595

APP 120.705  
 TWR 118.205  
 ATIS 125.805

**VILNIUS (EYVI)**  
**ILS CAT II Z RWY 01**  
**(CAT A/B/C/D)**



OCA(OCH)	STRAIGHT-IN APPROACH	ILS CAT II				DIST DME IAV	MISSED APPROACH						
		A	B	C	D		6	5	4	3	2		
	ILS CAT II	746 (151)	764 (169)	775 (180)	790 (195)	Altitude	2540	2220	1910	1590	1280		
	ILS CAT I	844 (249)	856 (261)	865 (270)	875 (280)	Height	(1945)	(1625)	(1315)	(995)	(685)		
CIRCLING NOT AUTHORIZED													
		GS					Kts	80	100	120	140	160	180
		FAP - THR 6.3 NM					min:sec	4:44	3:47	3:09	2:42	2:22	2:06
		Rate of descent (5.2%)					ft/min	415	520	625	730	835	940

**INSTRUMENT  
APPROACH  
CHART - ICAO**

**AERODROME ELEV 649**  
HEIGHTS RELATED TO  
THR RWY 01 - ELEV 595

**VILNIUS (EYVI)  
ILS CAT II Z RWY 01  
(CAT A/B/C/D)**

**TABULAR DESCRIPTION**

**IAF BILDI, INITIAL APPROACH**

Serial Number	Path Descriptor	Waypoint Identifier	Fly-over	Course/Track °M(°T)	Magnetic Variation	Distance (NM)/ Time	Turn Direction	Altitude (FT)/ Flight level	Speed (KT)	VPA/TCH	Navigation Specification
001	IF	BILDI	—	—	8.3	—	—	+5000	-230	—	RNAV 1
002	TF	ODETU	—	140(148.3)	8.3	7.4	—	+4000	—	—	RNAV 1
003	TF	VI312	—	104(112.3)	8.3	4.1	—	+3000	-210	—	RNAV 1

**IAF INSOL, INITIAL APPROACH**

Serial Number	Path Descriptor	Waypoint Identifier	Fly-over	Course/Track °M(°T)	Magnetic Variation	Distance (NM)/ Time	Turn Direction	Altitude (FT)/ Flight level	Speed (KT)	VPA/TCH	Navigation Specification
001	IF	INSOL	—	—	8.3	—	—	+5000	-230	—	RNAV 1
002	TF	VI313	—	204(212.4)	8.3	3.5	—	—	—	—	RNAV 1
003	TF	VI312	—	283(291.4)	8.3	5.0	—	+3000	-210	—	RNAV 1

**IAF NOLNA, INITIAL APPROACH**

Serial Number	Path Descriptor	Waypoint Identifier	Fly-over	Course/Track °M(°T)	Magnetic Variation	Distance (NM)/ Time	Turn Direction	Altitude (FT)/ Flight level	Speed (KT)	VPA/TCH	Navigation Specification
001	IF	NOLNA	—	—	8.3	—	—	+4000	-230	—	RNAV 1
002	TF	VI312	—	014(022.0)	8.3	6.2	—	+3000	-210	—	RNAV 1

**MISSED APPROACH**

001	—	RW01	—	—	8.3	—	—	—	—	—	RNAV 1
002	CF	VI314	Y	014(022.0)	8.3	15.30	—	—	—	—	RNAV 1
003	DF	VI315	—	—	8.3	—	R	@5000	-210	—	RNAV 1
004	TF	VI316	—	177(184.9)	8.3	11.4	—	—	—	—	RNAV 1
005	TF	INSOL	—	232(240.0)	8.3	11.3	—	+5000	-230	—	RNAV 1
006	HM	INSOL	—	204(212.4)	8.3	1 min	L	+5000	-230	—	RNAV 1

FIX/POINTS	COORDINATES	FIX FORMATION
VNO	54 38 09.8N 025 17 37.1E	
INSOL (IAF/MAHF)	54 28 37.0N 025 21 03.5E	
BILDI (IAF)	54 35 16.4N 024 56 43.1E	
NOLNA (IAF)	54 21 46.6N 025 05 54.5E	
ODETU	54 29 01.7N 025 03 21.0E	
VI313	54 25 39.4N 025 17 49.9E	
VI312 (IF)	54 27 28.7N 025 09 51.3E	11.62 NM VNO ; BRG 013.66° / 10.73 NM IAV
FAP	54 31 32.7N 025 12 39.1E	7.23 NM VNO ; BRG 013.66° / 6.34 NM IAV
RW01	54 37 25.27N 025 16 42.70E	
VI314 (MATF)	54 51 35.4N 025 26 35.3E	
VI315	54 45 39.1N 025 39 36.6E	
VI316	54 34 16.1N 025 37 56.0E	
DME IAV	54 37 33.7N 025 16 55.8E	
LOC IAV	54 38 55.0N 025 17 44.9E	