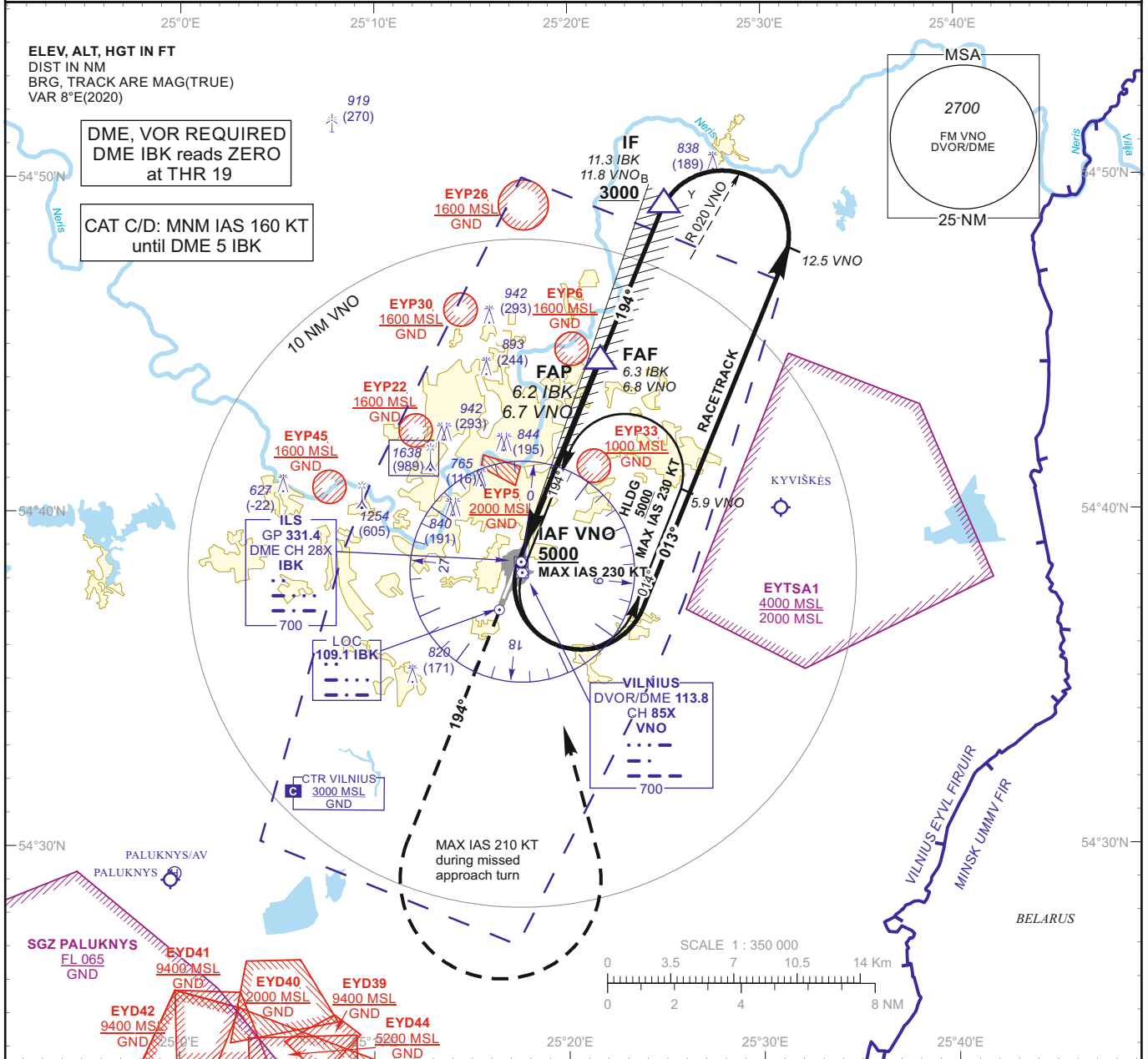


INSTRUMENT APPROACH CHART - ICAO

AERODROME ELEV 649
HEIGHTS RELATED TO THR RWY 19 - ELEV 649

APP 120.705
TWR 118.205
ATIS 125.805

VILNIUS (EYVI)
ILS Y or LOC RWY 19
(CAT A/B/C/D)



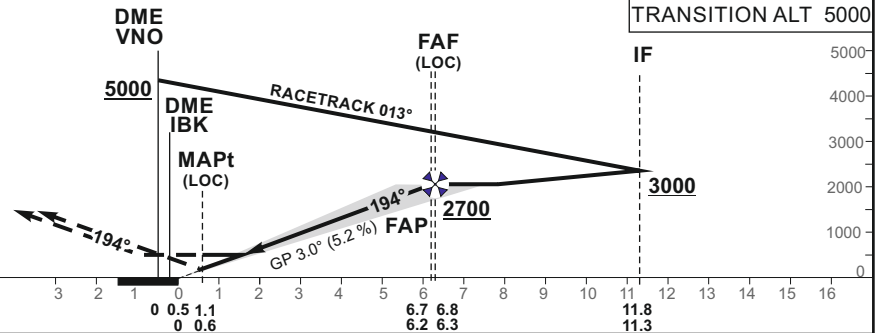
MISSED APPROACH

Climb on track 194° to 2400, then turn left (MAX IAS 210 KT) to VNO climbing to 5000.

ILS RDH 51

THR ELEV 649

NM to/from THR RWY 19
NM to/from DME VNO
NM to/from DME IBK



OCA(OCH)	ILS CAT I	A	B	C	D	DIST DME IBK	6	5	4	3	2		
		917 (268)	930 (281)	938 (289)	948 (299)		Altitude	2600	2280	1960	1650	1330	
STRAIGHT-IN APPROACH	LOC	1050 (400)					Height	(1951)	(1631)	(1311)	(1001)	(681)	
	CIRCLING						NOT AUTHORIZED						
						LOC : timing not authorized for defining the MAPt							
						GS	Kts	80	100	120	140	160	180
						FAF - MAPt 5.7 NM	min:sec	4:16	3:25	2:51	2:26	2:08	1:54
						Rate of descent (5.2%)	ft/min	415	520	625	730	835	940

For data tabulation see verso

Changes: lateral and vertical limits of EYP22; EYP45 added; OCA(H); MAPt position; SDF withdrawn; obstacles; scale.

INSTRUMENT
APPROACH
CHART - ICAO

AERODROME ELEV 649
HEIGHTS RELATED TO
THR RWY 19 - ELEV 649

VILNIUS (EYVI)
ILS Y or LOC RWY 19
(CAT A/B/C/D)

TABULAR DESCRIPTION

ILS or LOC INSTRUMENT APPROACH from IAF (VNO)		
FIX/POINTS	COORDINATES	FIX FORMATION
VNO (IAF)	54 38 09.8N 025 17 37.1E	
IF	54 49 10.7N 025 24 53.9E	BRG 192.63° / 11.81 NM VNO ; BRG 193.64° / 11.34 NM IBK
FAF	54 44 32.9N 025 21 39.8E	BRG 191.88° / 6.81 NM VNO ; BRG 193.64° / 6.34 NM IBK
FAP	54 44 24.0N 025 21 33.6E	BRG 191.84° / 6.65 NM VNO ; BRG 193.64° / 6.18 NM IBK
MAPt	54 39 14.1N 025 17 58.1E	BRG 182.49° / 1.09 NM VNO ; BRG 193.64° / 0.60 NM IBK
THR RWY 19	54 38 40.73N 025 17 34.99E	
LOC IBK	54 36 59.4N 025 16 24.8E	
DME IBK	54 38 29.0N 025 17 34.2E	
Final approach (LOC) descent angle: 3.00°		