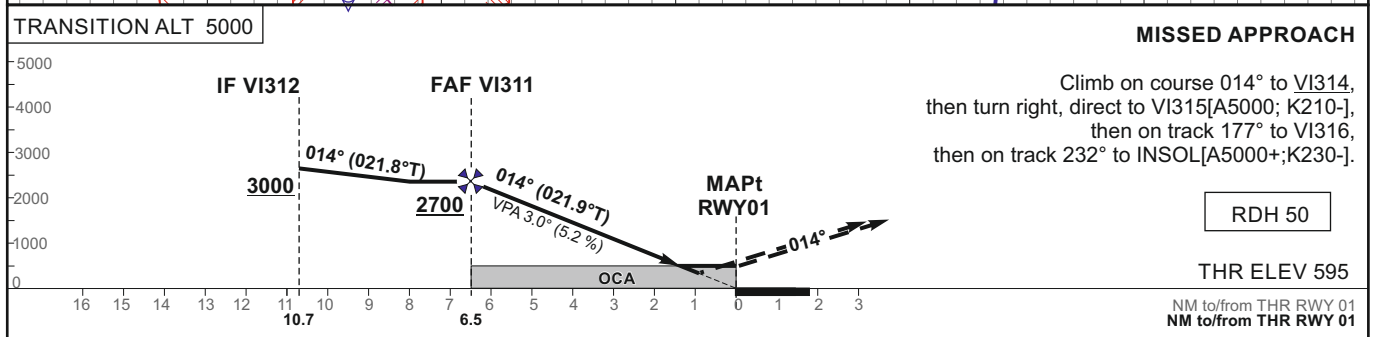
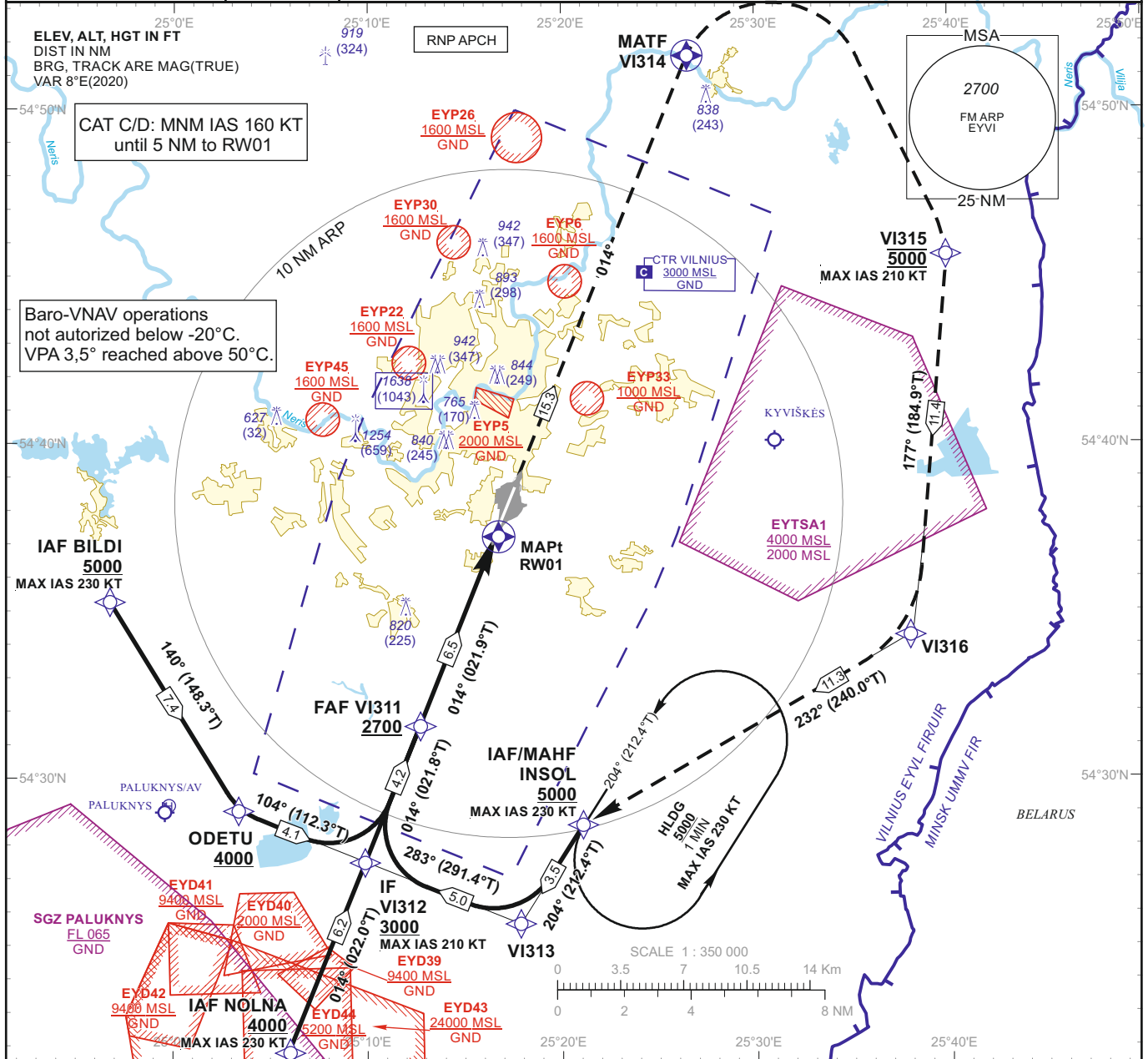


INSTRUMENT APPROACH CHART - ICAO	EGNOS CH 78897 E01A	AERODROME ELEV 649 HEIGHTS RELATED TO THR RWY 01 - ELEV 595	APP 120.705 TWR 118.205 ATIS 125.805	VILNIUS (EYVI) RNP RWY 01 (CAT A/B/C/D)
---	----------------------------	---	--	--



TRANSITION ALT 5000					MISSED APPROACH								
					Climb on course 014° to VI314, then turn right, direct to VI315[A5000; K210-], then on track 177° to VI316, then on track 232° to INSOL[A5000+; K230-].								
					RDH 50								
					THR ELEV 595								
					NM to/from THR RWY 01 NM to/from THR RWY 01								
OCA(OCH)		A	B	C	D	DIST TO RWY01	6	5	4	3	2		
STRAIGHT-IN APPROACH	LPV	896 (301)	909 (314)	917 (322)	927 (332)	Altitude	2540	2220	1910	1590	1280		
	LNAV/VNAV	930 (330)	940 (350)	950 (350)	960 (360)	Timing not authorized for defining the MAPt							
	LNAV	1050 (450)											
CIRCLING	NOT AUTHORIZED					GS	Kts	80	100	120	140	160	180
						FAF-THR 6.5 NM	min:sec	4:52	3:54	3:15	2:47	2:26	2:10
						Rate of descent (5.2%)	ft/min	415	520	625	730	835	940
For data tabulation see verso													

Changes: lateral and vertical limits of EYP22; EYP45 added; EYD41, EYD40, EYD39, EYD42, EYD43, EYD44; obstacles; scale.

INSTRUMENT
APPROACH
CHART - ICAOEGNOS
CH 78897
E01AAERODROME ELEV 649
HEIGHTS RELATED TO
THR RWY 01 - ELEV 595VILNIUS (EYVI)
RNP RWY 01
(CAT A/B/C/D)

TABULAR DESCRIPTION

IAF BILDI

Serial Number	Path Descriptor	Waypoint Identifier	Fly-over	Course/Track °M(°T)	Magnetic Variation	Distance (NM)/ Time	Turn Direction	Altitude (FT)/ Flight level	Speed (KT)	VPA/TCH	Navigation Specification
001	IF	BILDI	—	—	8.3	—	—	+5000	-230	—	RNP APCH
002	TF	ODETU	—	140(148.3)	8.3	7.4	—	+4000	—	—	RNP APCH
003	TF	VI312	—	104(112.3)	8.3	4.1	—	+3000	-210	—	RNP APCH

IAF INSOL

Serial Number	Path Descriptor	Waypoint Identifier	Fly-over	Course/Track °M(°T)	Magnetic Variation	Distance (NM)/ Time	Turn Direction	Altitude (FT)/ Flight level	Speed (KT)	VPA/TCH	Navigation Specification
001	IF	INSOL	—	—	8.3	—	—	+5000	-230	—	RNP APCH
002	TF	VI313	—	204(212.4)	8.3	3.5	—	—	—	—	RNP APCH
003	TF	VI312	—	283(291.4)	8.3	5.0	—	+3000	-210	—	RNP APCH

IAF NOLNA

Serial Number	Path Descriptor	Waypoint Identifier	Fly-over	Course/Track °M(°T)	Magnetic Variation	Distance (NM)/ Time	Turn Direction	Altitude (FT)/ Flight level	Speed (KT)	VPA/TCH	Navigation Specification
001	IF	NOLNA	—	—	8.3	—	—	+4000	-230	—	RNP APCH
002	TF	VI312	—	014(022.0)	8.3	6.2	—	+3000	-210	—	RNP APCH

001	IF	VI312	—	—	8.3	—	—	+3000	-210	—	RNP APCH
002	TF	VI311	—	014(021.84)	8.3	4.22	—	+2700	—	—	RNP APCH
003	TF	RW01	Y	014(021.90)	8.3	6.51	—	@645	—	-3.00/50	RNP APCH
004	CF	VI314	Y	014(022.03)	8.3	15.30	—	—	—	—	RNP APCH
005	DF	VI315	—	—	8.3	—	R	@5000	-210	—	RNP APCH
006	TF	VI316	—	177(184.9)	8.3	11.4	—	—	—	—	RNP APCH
007	TF	INSOL	—	232(240.0)	8.3	11.3	—	+5000	-230	—	RNP APCH
008	HM	INSOL	—	204(212.4)	8.3	1 min	L	+5000	-230	—	RNAV 1

WAYPOINT COORDINATES

FIX/POINTS	COORDINATES	FIX/POINTS	COORDINATES
INSOL (IAF/MAHF)	54 28 37.0N 025 21 03.5E	VI311 (FAF)	54 31 23.4N 025 12 32.7E
BILDI (IAF)	54 35 16.4N 024 56 43.1E	FAP	54 31 32.7N 025 12 39.1E
NOLNA (IAF)	54 21 46.6N 025 05 54.5E	RW01 (MAPt)	54 37 25.3N 025 16 42.7E
ODETU	54 29 01.7N 025 03 21.0E	VI314 (MATF)	54 51 35.4N 025 26 35.3E
VI313	54 25 39.4N 025 17 49.9E	VI315	54 45 39.1N 025 39 36.6E
VI312 (IF)	54 27 28.7N 025 09 51.3E	VI316	54 34 16.1N 025 37 56.0E

INSTRUMENT APPROACH CHART - ICAO	EGNOS CH 78897 E01A	AERODROME ELEV 649 HEIGHTS RELATED TO THR RWY 01 - ELEV 595	VILNIUS (EYVI) RNP RWY 01 (CAT A/B/C/D)
--	---------------------------	---	---

**SBAS FAS Data Block
Input Data**

Parameters	Values
Operation	0
SBAS Provider Identifier	1
Airport Identifier	EYVI
Runway Number	01
Runway Letter	0
Approach Performance Designator	0
Route Indicator	
Reference Path Data Selector	0
Reference Path Identifier	E01A
LTP/FTP Latitude	543725.2690N
LTP/FTP Longitude	0251642.7000E
LTP/FTP Height above ellipsoid (meters)	206.4
FPAP Latitude	543845.8010N
Delta FPAP Latitude (seconds)	80.5320
FPAP Longitude	0251738.5095E
Delta FPAP Longitude (seconds)	55.8095
Approach Threshold Crossing Height (TCH)	50.0
Approach TCH Units Selector	0
Glidepath Angle (GPA)	3.00
Course Width at threshold (meters)	105.00
Length Offset (meters)	168
Horizontal Alert Limit (HAL) (meters)	40.0
Vertical Alert Limit (VAL) (meters)	50.0
Final Approach Segment CRC	5926EE4C

Output Data

Data Block	10 09 16 19 05 01 00 00 01 31 30 05 2A 23 71 17 98 2E D9 0A 10 1C 28 75 02 03 B4 01 F4 01 2C 01 64 15 C8 FA 59 26 EE 4C
------------	--

Required Additional Data (not CRC wrapped)

ICAO Code	EY
LTP/FTP Orthometric Height (meters)	181.4
FPAP Orthometric Height (meters)	195.1

SPECIALUSIS TUŠČIAS PUSLAPIS

THIS PAGE INTENTIONALLY LEFT BLANK