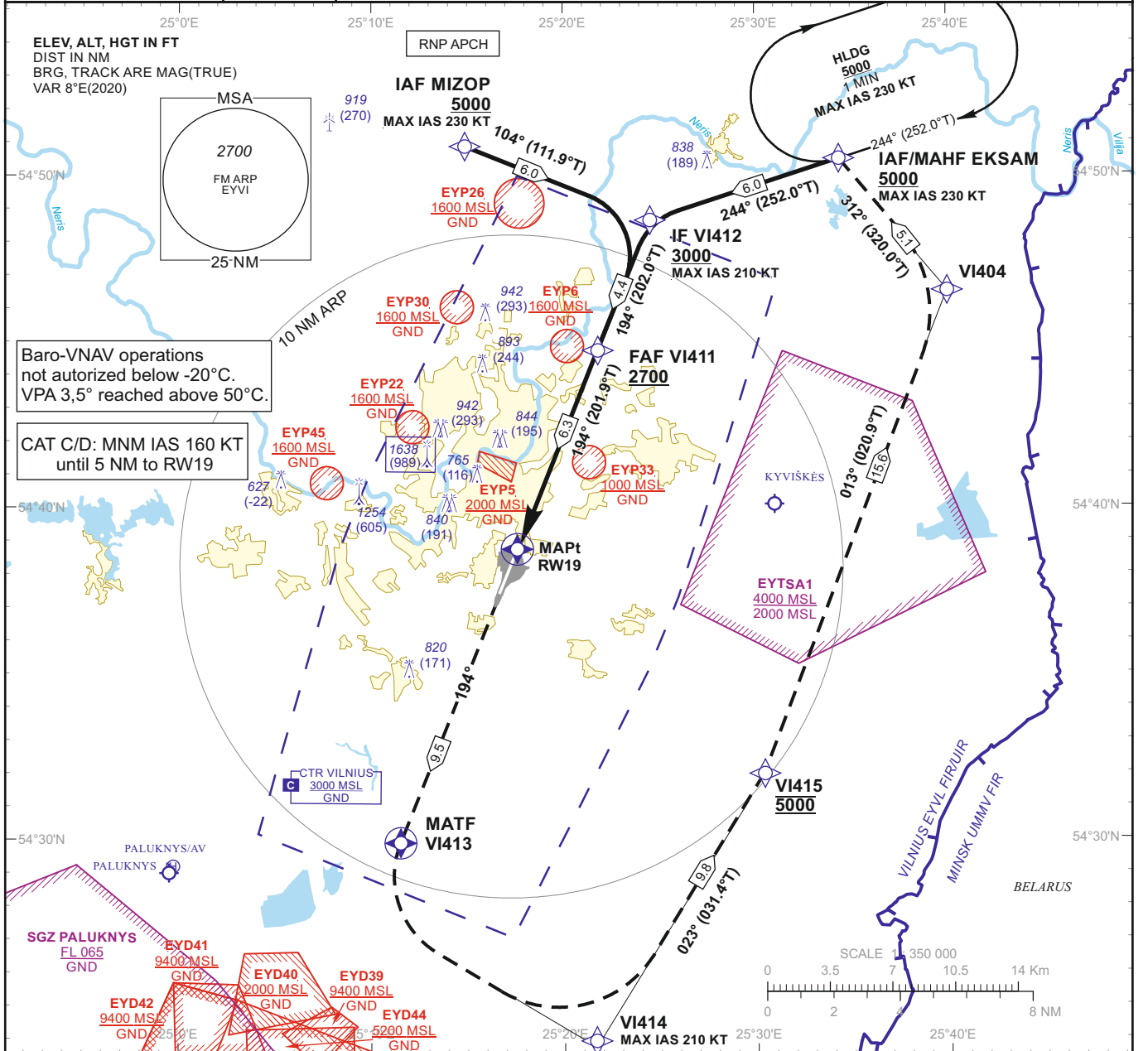


<b>INSTRUMENT APPROACH CHART - ICAO</b>	<b>EGNOS CH 98447 E19A</b>	<b>AERODROME ELEV 649</b> HEIGHTS RELATED TO THR RWY 19 - ELEV 649	APP 120.705 TWR 118.205 ATIS 125.805
			<b>VILNIUS (EYVI) RNP RWY 19 (CAT A/B/C/D)</b>

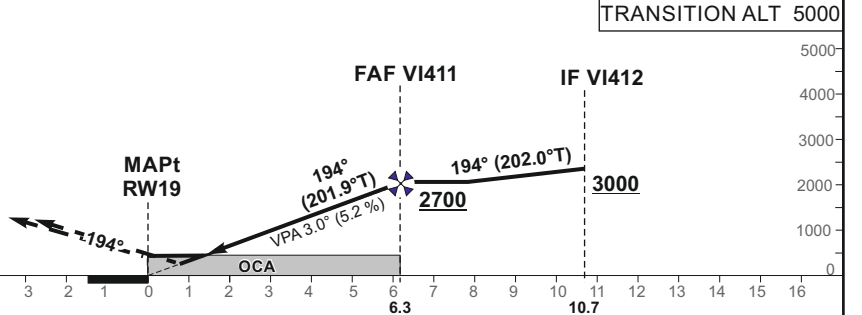


Climb on course 194° to VI413, then turn left, direct to VI414[K210-], then on track 023° to VI415[A5000], then on track 013° to VI404, then on track 312° to EKSAM[A5000+;K230-].

RDH 51

THR ELEV 649

NM to/from THR RWY 19  
NM to/from THR RWY 19



For data tabulation see verso

Changes: lateral and vertical limits of EYP22; EYP45 added; OCA(H); obstacles; scale.

<b>INSTRUMENT APPROACH CHART - ICAO</b>	<b>EGNOS CH 98447 E19A</b>	<b>AERODROME ELEV 649</b> HEIGHTS RELATED TO THR RWY 19 - ELEV 649	<b>VILNIUS (EYVI) RNP RWY 19 (CAT A/B/C/D)</b>
---	------------------------------------	--	--

## TABULAR DESCRIPTION

<b>IAF EKSAM</b>											
Serial Number	Path Descriptor	Waypoint Identifier	Fly-over	Course/Track °M(°T)	Magnetic Variation	Distance (NM)/ Time	Turn Direction	Altitude (FT)/ Flight level	Speed (KT)	VPA/TCH	Navigation Specification
001	IF	EKSAM	—	—	8.3	—	—	+5000	-230	—	RNP APCH
002	TF	VI412	—	244(252.0)	8.3	6.0	—	+3000	-210	—	RNP APCH
<b>IAF MIZOP</b>											
Serial Number	Path Descriptor	Waypoint Identifier	Fly-over	Course/Track °M(°T)	Magnetic Variation	Distance (NM)/ Time	Turn Direction	Altitude (FT)/ Flight level	Speed (KT)	VPA/TCH	Navigation Specification
001	IF	MIZOP	—	—	8.3	—	—	+5000	-230	—	RNP APCH
002	TF	VI412	—	104(111.9)	8.3	6.0	—	+3000	-210	—	RNP APCH
001	IF	VI412	—	—	8.3	—	—	+3000	-210	—	RNP APCH
002	TF	VI411	—	194(201.96)	8.3	4.40	—	+2700	—	—	RNP APCH
003	TF	RW19	Y	194(201.91)	8.3	6.34	—	@700	—	-3.00/51	RNP APCH
004	CF	VI413	Y	194(201.82)	8.3	9.50	—	—	—	—	RNP APCH
005	DF	VI414	—	—	8.3	—	L	—	-210	—	RNP APCH
006	TF	VI415	—	023(031.5)	8.3	9.8	—	@5000	—	—	RNP APCH
007	TF	VI404	—	013(020.9)	8.3	15.6	—	—	—	—	RNP APCH
008	TF	EKSAM	—	312(320.0)	8.3	5.1	—	+5000	-230	—	RNP APCH
009	HM	EKSAM	—	244(252.0)	8.3	1 min	R	+5000	-230	—	RNAV 1

## WAYPOINT COORDINATES

FIX/POINTS	COORDINATES	FIX/POINTS	COORDINATES
EKSAM (IAF/MAHF)	54 50 28.1N 025 34 22.5E	RW19 (MAPt)	54 38 40.7N 025 17 35.0E
MIZOP (IAF)	54 50 51.1N 025 14 52.6E	VI413 (MATF)	54 29 52.5N 025 11 30.2E
VI412 (IF)	54 48 37.4N 025 24 30.6E	VI414	54 23 40.3N 025 21 37.7E
VI411 (FAF)	54 44 33.3N 025 21 40.1E	VI415	54 32 01.1N 025 30 23.8E
FAP	54 44 24.0N 025 21 33.6E	VI404	54 46 34.0N 025 40 02.2E

INSTRUMENT APPROACH CHART - ICAO	EGNOS CH 98447 E19A	AERODROME ELEV 649 HEIGHTS RELATED TO THR RWY 19 - ELEV 649	VILNIUS (EYVI) RNP RWY 19 (CAT A/B/C/D)
--	---------------------------	---	---

**SBAS FAS Data Block  
Input Data**

Parameters	Values
Operation	0
SBAS Provider Identifier	1
Airport Identifier	EYVI
Runway Number	19
Runway Letter	0
Approach Performance Designator	0
Route Indicator	
Reference Path Data Selector	0
Reference Path Identifier	E19A
LTP/FTP Latitude	543840.7320N
LTP/FTP Longitude	0251734.9950E
LTP/FTP Height above ellipsoid (meters)	222.7
FPAP Latitude	543708.5455N
Delta FPAP Latitude (seconds)	-92.1865
FPAP Longitude	0251631.1190E
Delta FPAP Longitude (seconds)	-63.8760
Approach Threshold Crossing Height (TCH)	51.0
Approach TCH Units Selector	0
Glidepath Angle (GPA)	3.00
Course Width at threshold (meters)	105.00
Length Offset (meters)	560
Horizontal Alert Limit (HAL) (meters)	40.0
Vertical Alert Limit (VAL) (meters)	50.0
Final Approach Segment CRC	722231A5

**Output Data**

Data Block	10 09 16 19 05 13 00 00 01 39 31 05 B8 70 73 17 26 C7 DA 0A B3 1C CB 2F FD F8 0C FE FE 01 2C 01 64 46 C8 FA 72 22 31 A5
------------	--

**Required Additional Data (not CRC wrapped)**

ICAO Code	EY
LTP/FTP Orthometric Height (meters)	197.7
FPAP Orthometric Height (meters)	185.8

SPECIALUSIS TUŠČIAS PUSLAPIS

*THIS PAGE INTENTIONALLY LEFT BLANK*