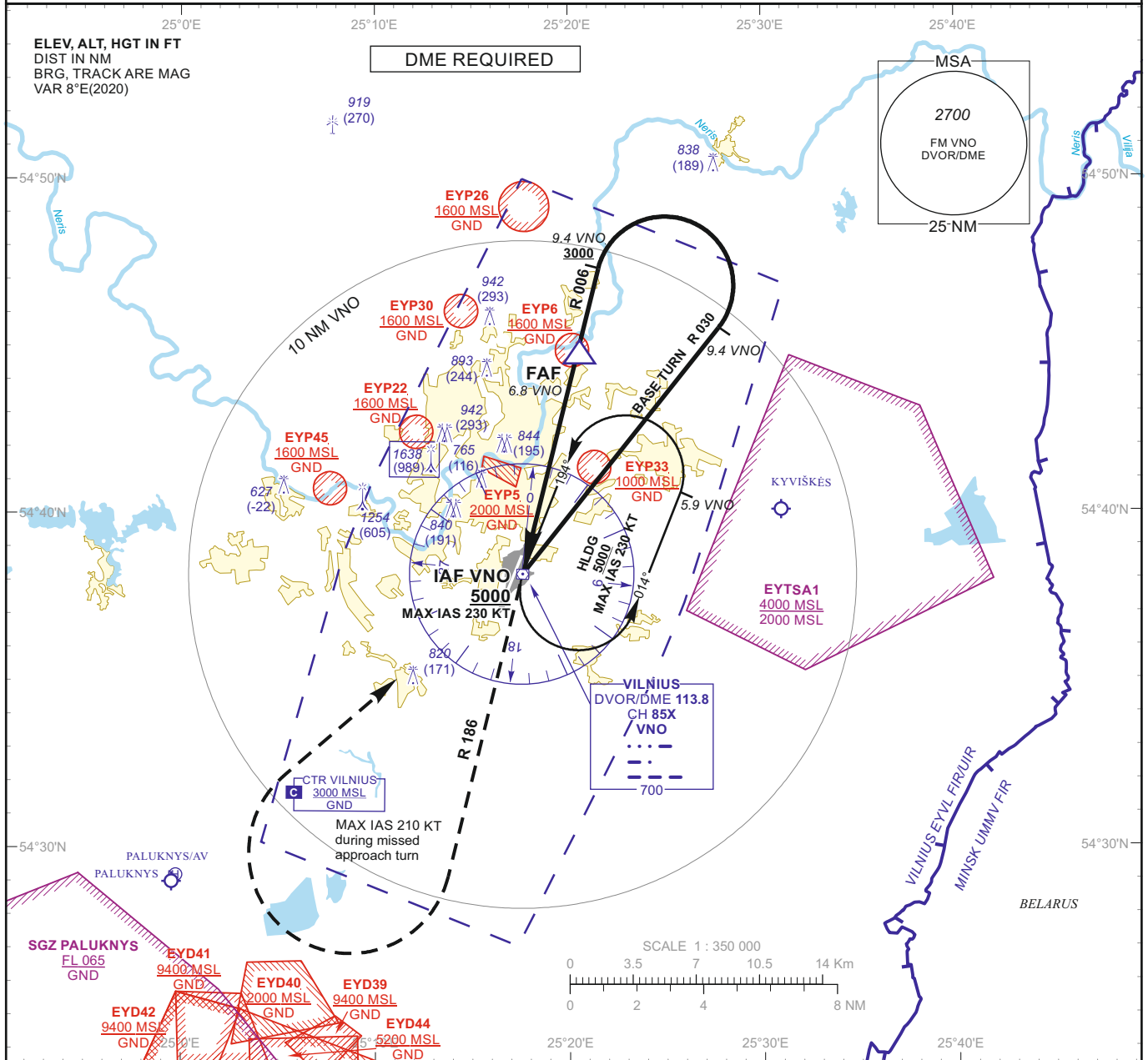


**INSTRUMENT
APPROACH
CHART - ICAO**

AERODROME ELEV 649
HEIGHTS RELATED TO
THR RWY 19 - ELEV 649

APP 120.705
TWR 118.205
ATIS 125.805

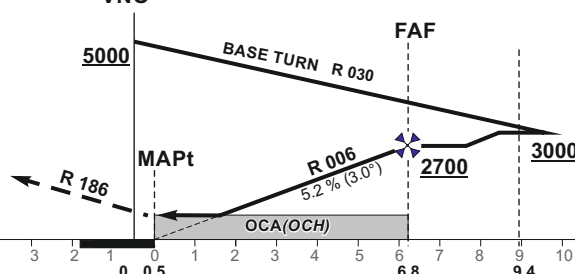
**VILNIUS (EYVI)
VOR Y RWY 19
(CAT C/D)**



MISSED APPROACH

Climb via VNO on R 186 to 3000, then turn right (MAX IAS 210 KT) to VNO climbing to 5000. Climb with 3.6% or more until passing 3000 due to airspace restriction. When MACG 3.6% not possible, report ATC immediately.

DVOR/DME VNO



TRANSITION ALT 5000

THR ELEV 649

NM to/from THR RWY 19
NM to/from DME VNO

OCA(OCH)	C	D	DIST DME VNO								
			6	5	4	3	2				
STRAIGHT-IN APPROACH	VOR	1190 (540)	Altitude	2450	2130	1810	1500	1190			
			Height	(1801)	(1481)	(1161)	(851)	(541)			
CIRCLING			NOT AUTHORIZED								
			Timing not authorized for defining the MAPt								
			GS	Kts	80	100	120	140	160	180	
			FAF-MAPt	6.3 NM	min:sec	4:44	3:47	3:09	2:42	2:22	2:06
			Rate of descent (5.2%)	ft/min	415	520	625	730	835	940	

For data tabulation see verso

Changes: lateral and vertical limits of EYP22; EYP45 added; obstacles; scale.

**INSTRUMENT
APPROACH
CHART - ICAO**

AERODROME ELEV 649
HEIGHTS RELATED TO
THR RWY 19 - ELEV 649

**VILNIUS (EYVI)
VOR Y RWY 19
(CAT C/D)**

TABULAR DESCRIPTION

VOR INSTRUMENT APPROACH from IAF(VNO)		
FIX/POINTS	COORDINATES	FIX FORMATION
VNO (IAF)	54 38 09.8N 025 17 37.1E	
FAF	54 44 46.3N 025 20 28.0E	BRG 185.75° / 6.82 NM VNO
MAPt	54 38 38.1N 025 17 49.2E	BRG 185.75° / 0.49 NM VNO
THR RWY 19	54 38 40.73N 025 17 34.99E	
Final approach descent angle: 3.00°		