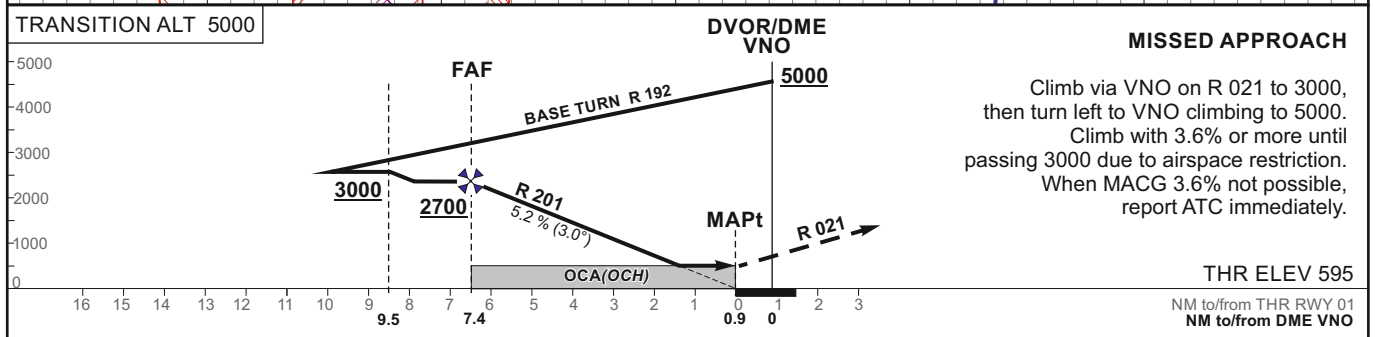
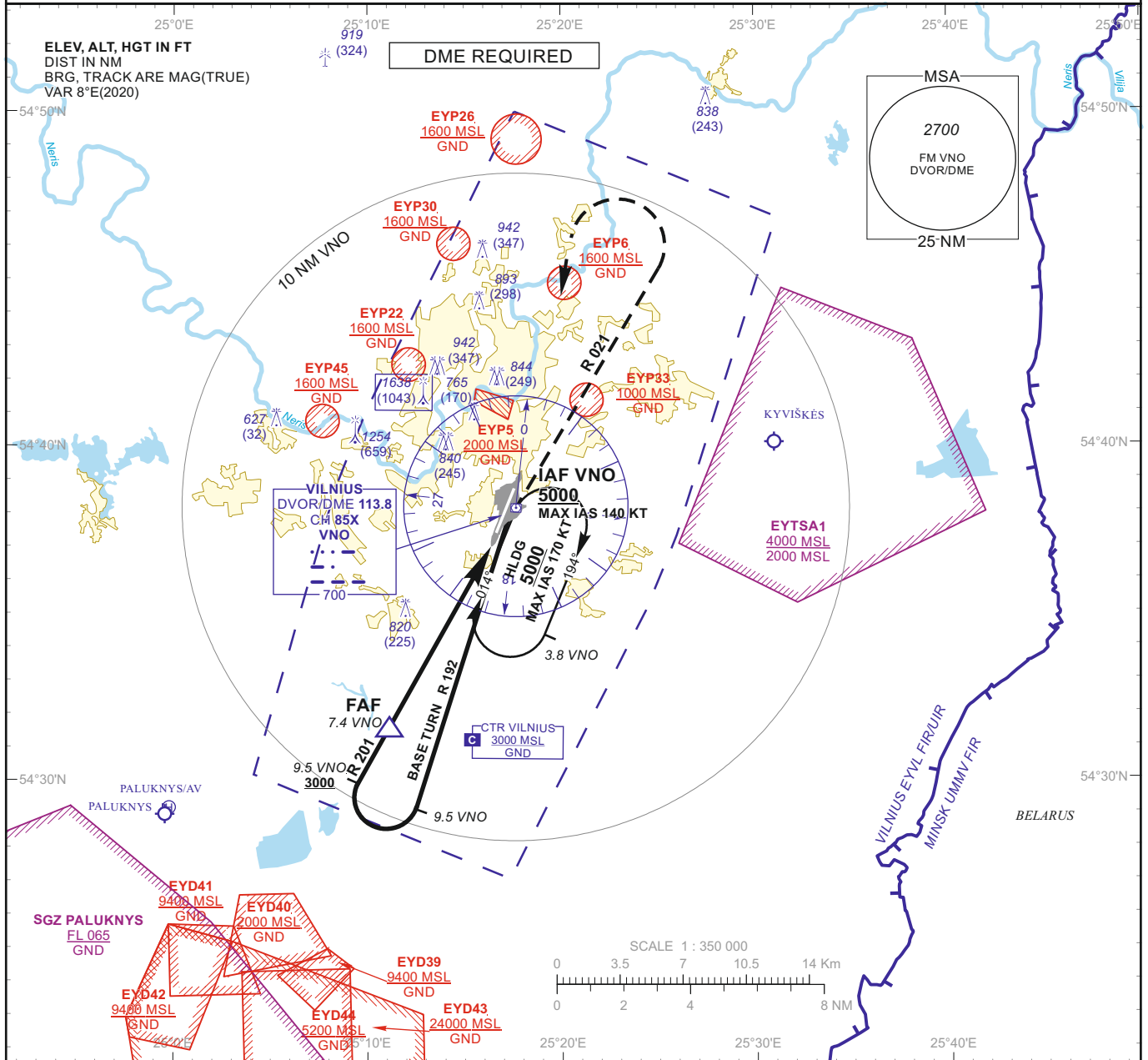


**INSTRUMENT
APPROACH
CHART - ICAO**

AERODROME ELEV 649
HEIGHTS RELATED TO
THR RWY 01 - ELEV 595

APP 120.705
TWR 118.205
ATIS 125.805

**VILNIUS (EYVI)
VOR Z RWY 01
(CAT A/B)**



MISSED APPROACH

Climb via VNO on R 021 to 3000, then turn left to VNO climbing to 5000.
Climb with 3.6% or more until passing 3000 due to airspace restriction.
When MACG 3.6% not possible, report ATC immediately.

THR ELEV 595

NM to/from THR RWY 01
NM to/from DME VNO

OCA(OCH)	STRAIGHT-IN APPROACH	A		B		DIST DME VNO	7	6	5	4	3	
		1060 (470)					Altitude	2580	2270	1950	1630	1320
	VOR						Height	(1985)	(1675)	(1355)	(1035)	(725)
CIRCLING		NOT AUTHORIZED					Timing not authorized for defining the MAPt					
		GS				Kts	80	100	120	140	160	180
		FAF-MAPt		6.5 NM		min:sec	4:52	3:54	3:15	2:47	2:26	2:10
		Rate of descent (5.2%)				ft/min	415	520	625	730	835	940

For data tabulation see verso

Changes: lateral and vertical limits of EYP22; EYP45 added; obstacles; scale.

INSTRUMENT
APPROACH
CHART - ICAO

AERODROME ELEV 649
HEIGHTS RELATED TO
THR RWY 01 - ELEV 595

VILNIUS (EYVI)
VOR Z RWY 01
(CAT A/B)

TABULAR DESCRIPTION

VOR INSTRUMENT APPROACH from IAF(VNO)		
FIX/POINTS	COORDINATES	FIX FORMATION
VNO (IAF)	54 38 09.8N 025 17 37.1E	
FAF	54 31 41.5N 025 11 27.2E	BRG 020.75° / 7.41 NM VNO
MAPt	54 37 22.7N 025 16 52.1E	BRG 020.75° / 0.90 NM VNO
THR RWY 01	54 37 25.27N 025 16 42.70E	
Final approach descent angle: 3.00°		