

STANDARD ARRIVAL CHART
INSTRUMENT (STAR) - ICAO

TRANSITION ALT
5000

ATIS 125.805
APP 120.705
TWR 118.205

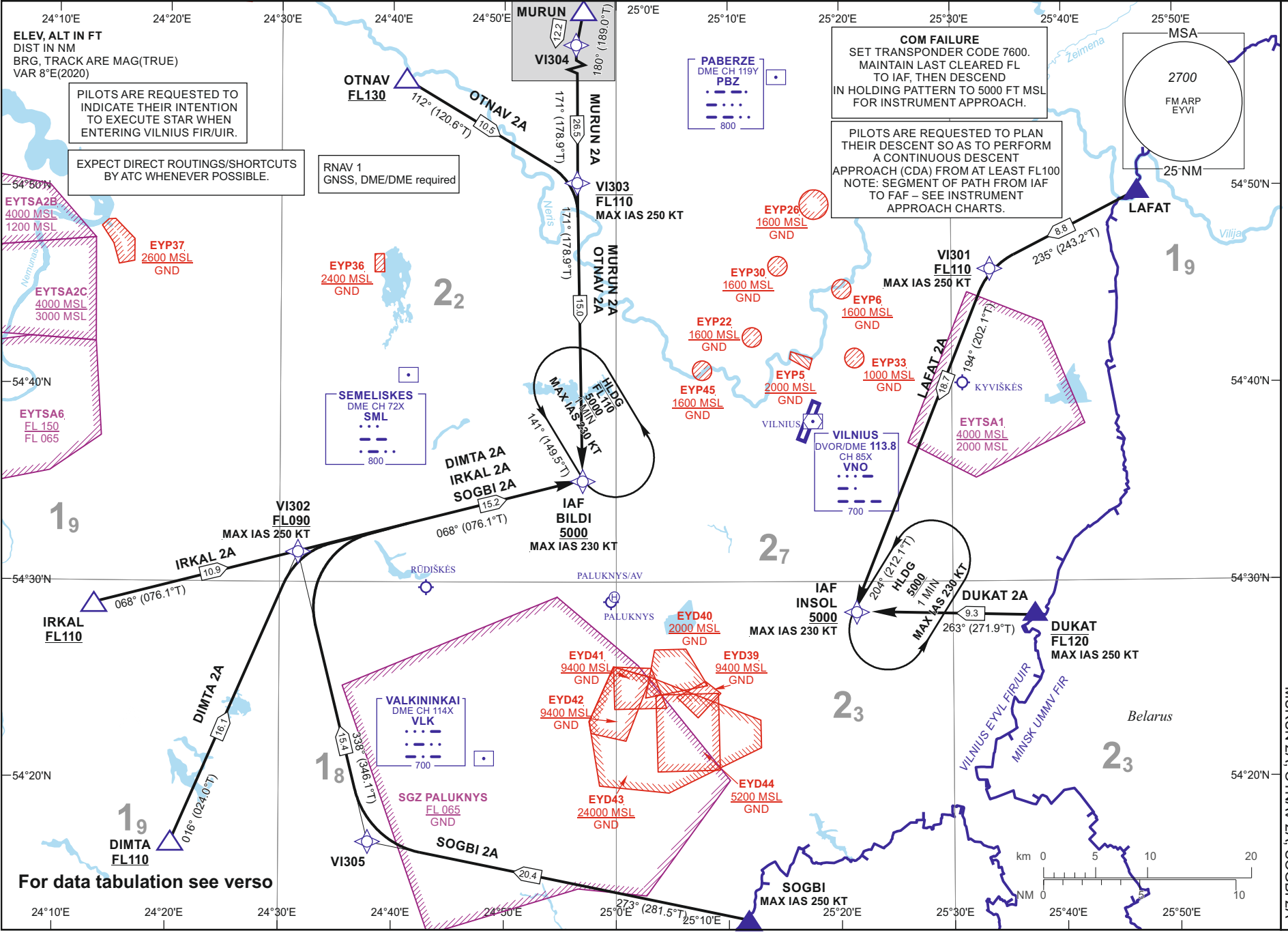
VILNIUS (EYVI)
RNAV RMY 01
DIMTA 2A, DUKAT 2A, IRKAL 2A, LAFAT 2A,
MURUN 2A, OTNAV 2A, SOGBI 2A

Changes:

07 AUG 2025

©2019 ORO NAVIGACIJA

eAIP 2nd Edition



For data tabulation see verso

**STANDARD ARRIVAL CHART
INSTRUMENT (STAR) - ICAO**TRANSITION ALT
5000**VILNIUS (EYVI)
RNAV RWY 01**DIMTA 2A, DUKAT 2A, IRKAL 2A, LAFAT 2A,
MURUN 2A, OTNAV 2A, SOGBI 2A

TABULAR DESCRIPTION

DIMTA 2A

Serial Number	Path Descriptor	Waypoint Identifier	Fly-over	Course/Track °M(°T)	Magnetic Variation	Distance (NM)/ Time	Turn Direction	Altitude (FT)/ Flight level	Speed (KT)	Navigation Specification
001	IF	DIMTA	—	—	8.2	—	—	+FL110	—	RNAV1
002	TF	VI302	—	016(024.0)	8.2	16.1	—	+FL090	-250	RNAV1
003	TF	BILDI	—	068(076.1)	8.3	15.2	—	+5000	-230	RNAV1

DUKAT 2A

Serial Number	Path Descriptor	Waypoint Identifier	Fly-over	Course/Track °M(°T)	Magnetic Variation	Distance (NM)/ Time	Turn Direction	Altitude (FT)/ Flight level	Speed (KT)	Navigation Specification
001	IF	DUKAT	—	—	8.6	—	—	-FL120	-250	RNAV1
002	TF	INSOL	—	263(271.9)	8.3	9.3	—	+5000	-230	RNAV1

IRKAL 2A

Serial Number	Path Descriptor	Waypoint Identifier	Fly-over	Course/Track °M(°T)	Magnetic Variation	Distance (NM)/ Time	Turn Direction	Altitude (FT)/ Flight level	Speed (KT)	Navigation Specification
001	IF	IRKAL	—	—	8.2	—	—	+FL110	—	RNAV1
002	TF	VI302	—	068(076.1)	8.2	10.9	—	+FL090	-250	RNAV1
003	TF	BILDI	—	068(076.1)	8.3	15.2	—	+5000	-230	RNAV1

LAFAT 2A

Serial Number	Path Descriptor	Waypoint Identifier	Fly-over	Course/Track °M(°T)	Magnetic Variation	Distance (NM)/ Time	Turn Direction	Altitude (FT)/ Flight level	Speed (KT)	Navigation Specification
001	IF	LAFAT	—	—	8.7	—	—	—	—	RNAV1
002	TF	VI301	—	235(243.2)	8.7	8.8	—	+FL110	-250	RNAV1
003	TF	INSOL	—	194(202.1)	8.3	18.7	—	+5000	-230	RNAV1

MURUN 2A

Serial Number	Path Descriptor	Waypoint Identifier	Fly-over	Course/Track °M(°T)	Magnetic Variation	Distance (NM)/ Time	Turn Direction	Altitude (FT)/ Flight level	Speed (KT)	Navigation Specification
001	IF	MURUN	—	—	8.7	—	—	—	—	RNAV1
002	TF	VI304	—	180(189.0)	8.7	12.2	—	—	—	RNAV1
003	TF	VI303	—	171(178.9)	8.4	26.5	—	-FL110	-250	RNAV1
004	TF	BILDI	—	171(178.9)	8.3	15.0	—	+5000	-230	RNAV1

OTNAV 2A

Serial Number	Path Descriptor	Waypoint Identifier	Fly-over	Course/Track °M(°T)	Magnetic Variation	Distance (NM)/ Time	Turn Direction	Altitude (FT)/ Flight level	Speed (KT)	Navigation Specification
001	IF	OTNAV	—	—	8.4	—	—	+FL130	—	RNAV1
002	TF	VI303	—	112(120.6)	8.4	10.5	—	-FL110	-250	RNAV1
003	TF	BILDI	—	171(178.9)	8.3	15.0	—	+5000	-230	RNAV1

FOR DETAILED FLIGHT PROCEDURES REFER TO AIP EYVI AD 2.22

**STANDARD ARRIVAL CHART
INSTRUMENT (STAR) - ICAO**

TRANSITION ALT 5000

**VILNIUS (EYVI)
RNAV RWY 01**
 DIMTA 2A, DUKAT 2A, IRKAL 2A, LAFAT 2A,
 MURUN 2A, OTNAV 2A, SOGBI 2A

TABULAR DESCRIPTION
SOGBI 2A

Serial Number	Path Descriptor	Waypoint Identifier	Fly-over	Course/Track °M(°T)	Magnetic Variation	Distance (NM)/ Time	Turn Direction	Altitude (FT)/ Flight level	Speed (KT)	Navigation Specification
001	IF	SOGBI	—	—	8.4	—	—	—	-250	RNAV1
002	TF	VI305	—	273(281.5)	8.2	20.4	—	—	—	RNAV1
003	TF	VI302	—	338(346.1)	8.2	15.4	—	+FL090	-250	RNAV1
004	TF	BILDI	—	068(076.1)	8.3	15.2	—	+5000	-230	RNAV1

HOLDINGS IDENTIFICATION

Holding fix	Geographical coordinates	Inbound track °M(°T)	Magnetic Variation	Outbound distance (NM)/ Time	Turn Direction	Minimum/Maximum holding altitude (FT)/Flight level	Speed (KT)
BILDI	54 35 16.4N 024 56 43.1E	141(149.5)	8.3	1 min	L	+5000 / -FL110	-230
INSOL	54 28 37.0N 025 21 03.5E	204(212.1)	8.3	1 min	L	+5000	-230

WAYPOINT COORDINATES

FIX/POINTS	COORDINATES	FIX/POINTS	COORDINATES
VI301	54 45 55.5N 025 33 08.0E	IRKAL	54 29 02.4N 024 13 11.9E
VI302	54 31 40.5N 024 31 20.4E	LAFAT	54 49 52.0N 025 46 43.0E
VI303	54 50 15.0N 024 56 12.8E	MURUN	55 28 46.6N 024 58 40.1E
VI304	55 16 42.2N 024 55 18.6E	OTNAV	54 55 33.0N 024 40 36.0E
VI305	54 16 45.6N 024 37 41.8E	SOGBI	54 12 47.0N 025 11 45.0E
BILDI	54 35 16.4N 024 56 43.1E	PBZ	54 55 38.0N 025 14 23.0E
DIMTA	54 16 57.1N 024 20 08.9E	SML	54 40 31.2N 024 41 32.4E
DUKAT	54 28 17.3N 025 36 55.2E	VLK	54 21 02.9N 024 48 13.2E
INSOL	54 28 37.0N 025 21 03.5E	VNO	54 38 09.8N 025 17 37.1E

FOR DETAILED FLIGHT PROCEDURES REFER TO AIP EYVI AD 2.22

SPECIALUSIS TUŠČIAS PUSLAPIS

THIS PAGE INTENTIONALLY LEFT BLANK