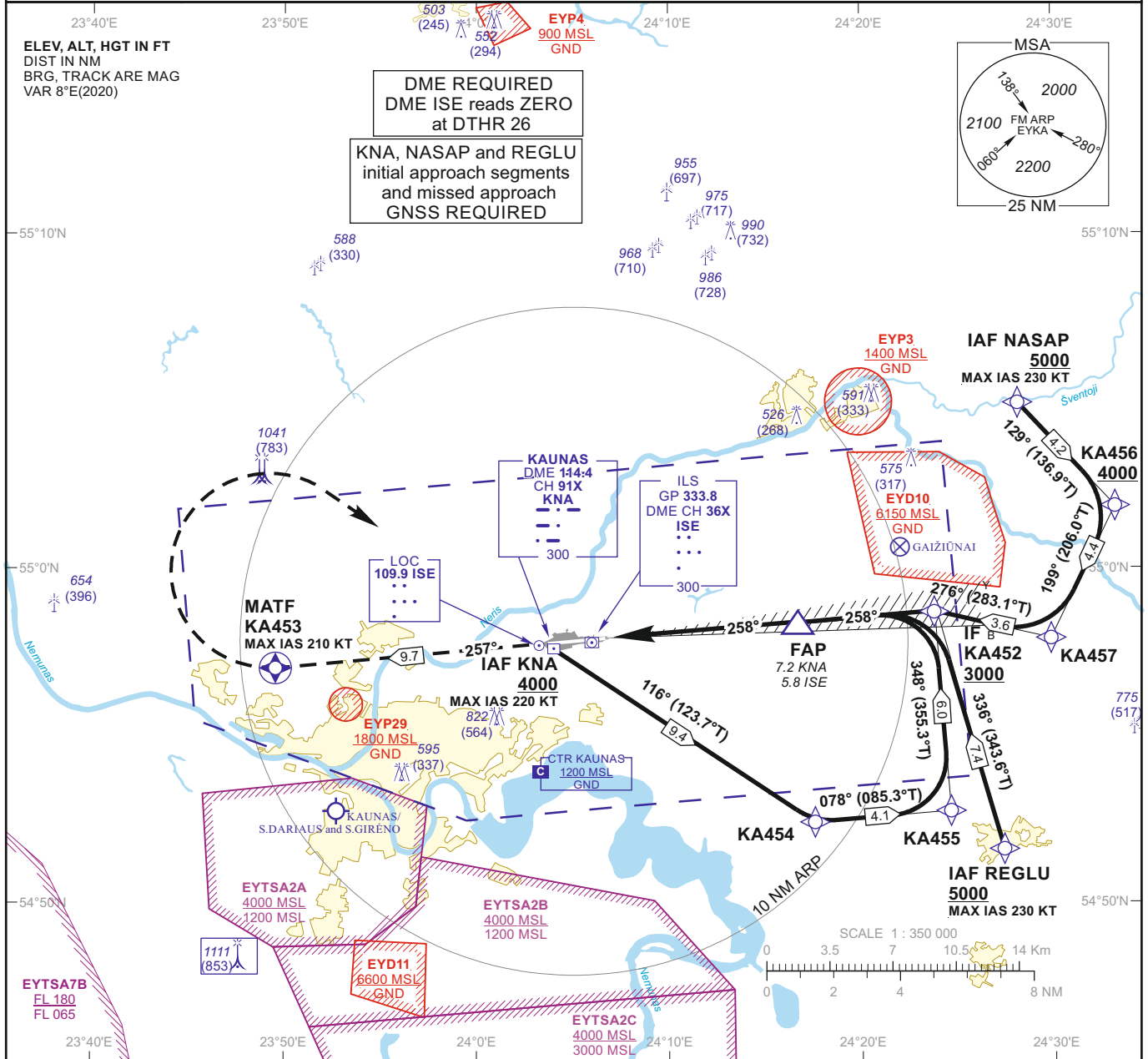


INSTRUMENT APPROACH CHART - ICAO

AERODROME ELEV 259
 HEIGHTS RELATED TO
 DTHR RWY 26 - ELEV 258

TWR 124.205
 118.505
 ATIS 129.055

**KAUNAS (EYKA)
 ILS CAT II Z RWY 26
 (CAT A/B/C/D)**



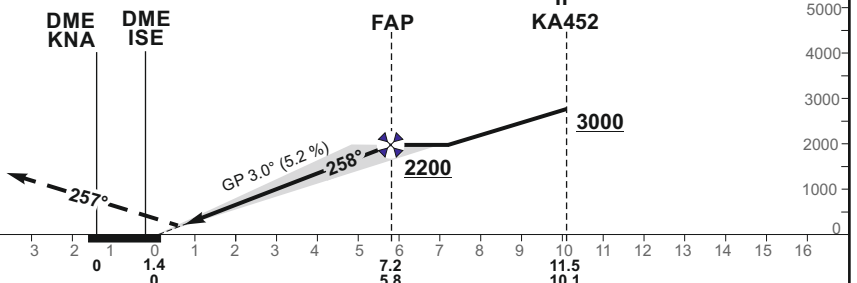
MISSED APPROACH

Climb on course 257° to KA453, then turn right [K210-], direct to IAF KNA climbing to 4000.

ILS RDH 52

DTHR ELEV 258

NM to/from DTHR RWY 26
 NM to/from DME KNA
 NM to/from DME ISE



OCA(OCH)	A	B	C	D	DIST DME ISE	5	4	3	2			
STRAIGHT-IN APPROACH	413 (155)	431 (173)	442 (184)	457 (199)	Altitude	1890	1580	1260	950			
	511 (253)	524 (266)	532 (274)	542 (284)	Height	(1632)	(1322)	(1002)	(692)			
CIRCLING	730 (470)	760 (500)	1230 (970)	not authorized								
					GS	Kts	80	100	120	140	160	180
					FAP-DTHR 5.8 NM	min:sec	4:21	3:29	2:54	2:29	2:11	1:56
					Rate of descent (5.2%)	ft/min	415	520	625	730	835	940

For data tabulation see verso

Changes: EYP37 and EYP38 withdrawn; OCA(H); obstacles; scale.

**INSTRUMENT
APPROACH
CHART - ICAO**

AERODROME ELEV 259
HEIGHTS RELATED TO
DTHR RWY 26 - ELEV 258

**KAUNAS (EYKA)
ILS CAT II Z RWY 26
(CAT A/B/C/D)**

TABULAR DESCRIPTION

IAF KNA, INITIAL APPROACH

Serial Number	Path Descriptor	Waypoint Identifier	Fly-over	Course/Track °M(°T)	Magnetic Variation	Distance (NM)/ Time	Turn Direction	Altitude (FT)/ Flight level	Speed (KT)	VPA/TCH	Navigation Specification
001	IF	KNA	—	—	7.5	—	—	+4000	-220	—	RNAV 1
002	TF	KA454	—	116(123.7)	7.5	9.4	—	—	—	—	RNAV 1
003	TF	KA455	—	078(085.3)	7.5	4.1	—	—	—	—	RNAV 1
004	TF	KA452	—	348(355.3)	7.5	6.0	—	+3000	—	—	RNAV 1

IAF NASAP, INITIAL APPROACH

Serial Number	Path Descriptor	Waypoint Identifier	Fly-over	Course/Track °M(°T)	Magnetic Variation	Distance (NM)/ Time	Turn Direction	Altitude (FT)/ Flight level	Speed (KT)	VPA/TCH	Navigation Specification
001	IF	NASAP	—	—	7.5	—	—	+5000	-230	—	RNAV 1
002	TF	KA456	—	129(136.9)	7.5	4.2	—	+4000	—	—	RNAV 1
003	TF	KA457	—	199(206.0)	7.5	4.4	—	—	—	—	RNAV 1
004	TF	KA452	—	276(283.1)	7.5	3.6	—	+3000	—	—	RNAV 1

IAF REGLU, INITIAL APPROACH

Serial Number	Path Descriptor	Waypoint Identifier	Fly-over	Course/Track °M(°T)	Magnetic Variation	Distance (NM)/ Time	Turn Direction	Altitude (FT)/ Flight level	Speed (KT)	VPA/TCH	Navigation Specification
001	IF	REGLU	—	—	7.5	—	—	+5000	-230	—	RNAV 1
002	TF	KA452	—	336(343.6)	7.5	7.4	—	+3000	—	—	RNAV 1

MISSED APPROACH

001	—	RW26	—	—	7.5	—	—	—	—	—	RNAV 1
002	CF	KA453	Y	257(264.87)	7.5	9.7	—	—	-210	—	RNAV 1
003	DF	KNA	—	—	7.5	—	R	+4000	-220	—	RNAV 1

FIX/POINTS	COORDINATES	FIX FORMATION
NASAP (IAF)	55 04 57.2N 024 28 10.6E	
REGLU (IAF)	54 51 37.2N 024 27 23.7E	
KNA (IAF)	54 57 37.4N 024 03 59.1E	
KA454	54 52 26.0N 024 17 33.7E	
KA455	54 52 46.2N 024 24 37.3E	
KA456	55 01 52.0N 024 33 12.6E	
KA457	54 57 55.1N 024 29 51.4E	
KA452 (IF)	54 58 44.2N 024 23 46.4E	11.46 NM KNA ; BRG 257.53° / 10.09 NM ISE
FAP	54 58 23.3N 024 16 25.6E	7.21 NM KNA ; BRG 257.53° / 5.84 NM ISE
RW26 (DTHR)	54 57 53.79N 024 06 19.46E	
KA453 (MATF)	54 57 03.0N 023 49 33.4E	
DME ISE	54 57 49.0N 024 06 00.1E	
LOC ISE	54 57 44.97N 024 03 21.54E	

Changes: