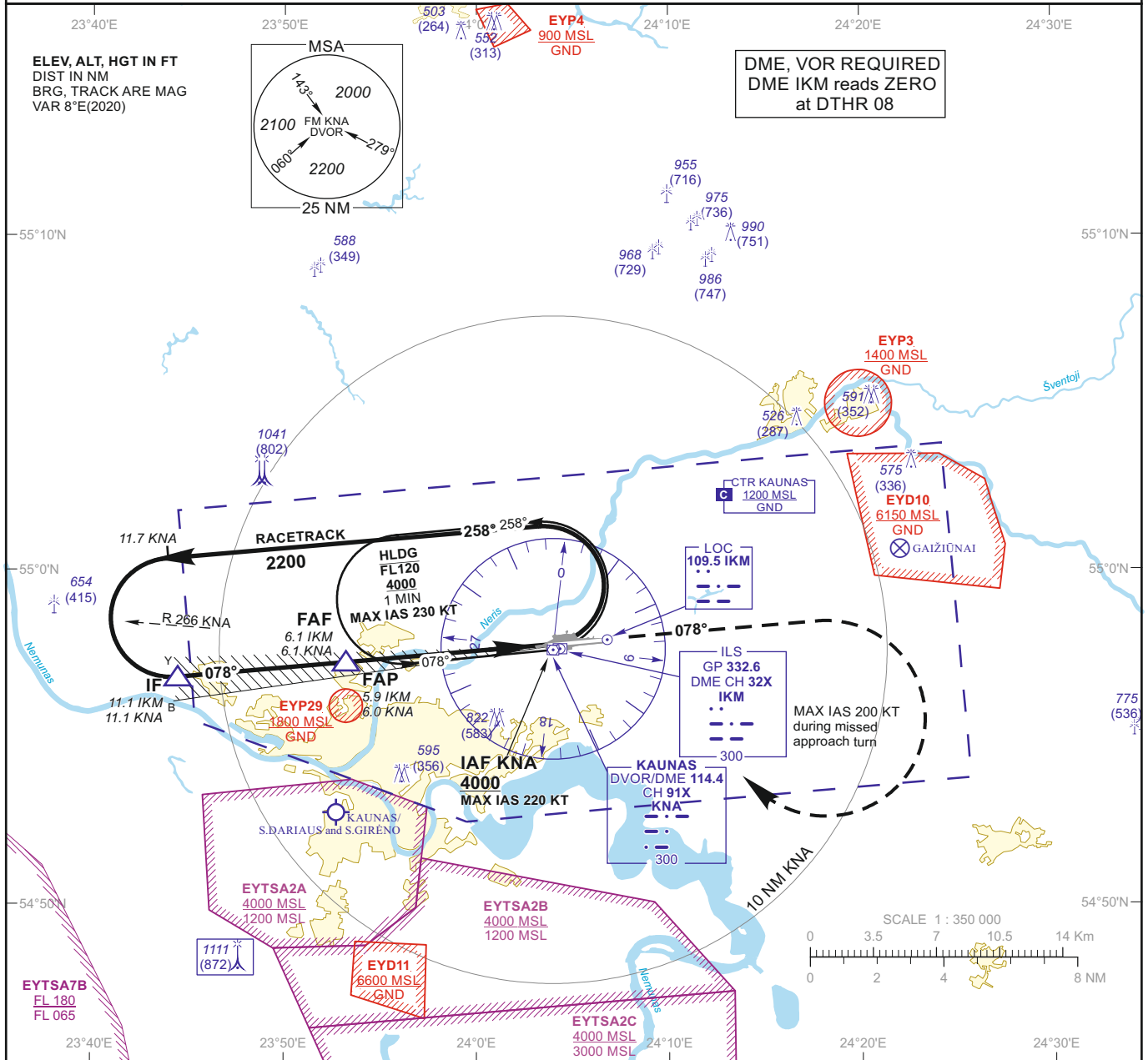


INSTRUMENT APPROACH CHART - ICAO

AERODROME ELEV 259
HEIGHTS RELATED TO
DTHR RWY 08 - ELEV 239

TWR 124.205
118.505
ATIS 129.055

KAUNAS (EYKA)
ILS Y or LOC RWY 08
(CAT A/B/C/D)



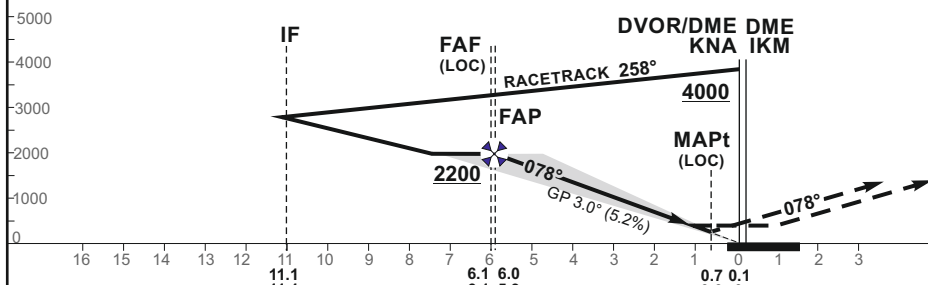
TRANSITION ALT 5000

MISSED APPROACH

Climb on track 078° to 2200, then turn right (MAX IAS 200 KT) to KNA, climbing to 4000. Climb with 3.5% or more until passing 2200 due to airspace structure.

ILS RDH 51

DTHR ELEV 239



NM to/from DTHR RWY 08
NM to/from DME KNA
NM to/from DME IKM

OCA(OCH)		A	B	C	D	DIST DME IKM	5	4	3	2				
STRAIGHT-IN APPROACH	ILS CAT I	505 (266)	518 (279)	526 (287)	536 (297)	Altitude	1870	1560	1240	930				
	LOC	640 (400)				Height	(1631)	(1321)	(1001)	(691)				
CIRCLING		730 (470)	760 (500)	1230 (970)	not authorized	LOC : timing not authorized for defining the MAPt								
							GS	Kts	80	100	120	140	160	180
							FAF - MAPt 5.5 NM	min:sec	4:07	3:18	2:45	2:21	2:04	1:50
							Rate of descent (5.2%)	ft/min	415	520	625	730	835	940

For data tabulation see verso

Changes: EYP37 and EYP38 withdrawn; OCA(H); MAPt position.

INSTRUMENT
APPROACH
CHART - ICAO

AERODROME ELEV 259
HEIGHTS RELATED TO
DTHR RWY 08 - ELEV 239

KAUNAS (EYKA)
ILS Y or LOC RWY 08
(CAT A/B/C/D)

TABULAR DESCRIPTION

ILS or LOC INSTRUMENT APPROACH from IAF(KNA)		
FIX/POINTS	COORDINATES	FIX FORMATION
KNA (IAF)	54 57 37.4N 024 03 59.1E	
IF	54 56 48.0N 023 44 45.0E	BRG 78.35° / 11.12 NM KNA ; BRG 077.57° / 11.06 NM IKM
FAF	54 57 14.8N 023 53 23.4E	BRG 79.01° / 6.12 NM KNA ; BRG 077.57° / 6.05 NM IKM
FAP	54 57 15.6N 023 53 38.8E	BRG 79.05° / 5.97 NM KNA ; BRG 077.57° / 5.90 NM IKM
MAPt	54 57 43.3N 024 02 48.7E	BRG 90.82° / 0.68 NM KNA ; BRG 077.57° / 0.60 NM IKM
DTHR RWY 08	54 57 46.44N 024 03 50.94E	
DME IKM	54 57 42.8N 024 04 08.4E	
LOC IKM	54 57 55.25N 024 06 49.06E	
Final approach (LOC) descent angle: 3.00°		