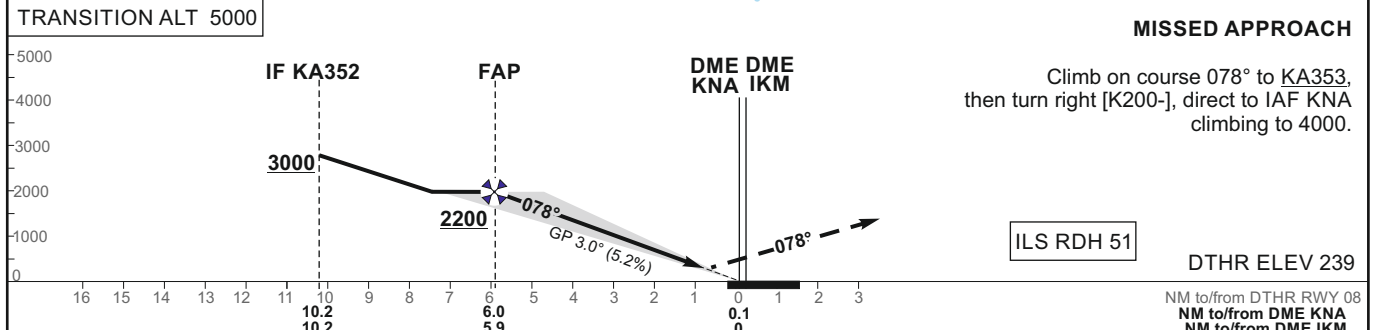
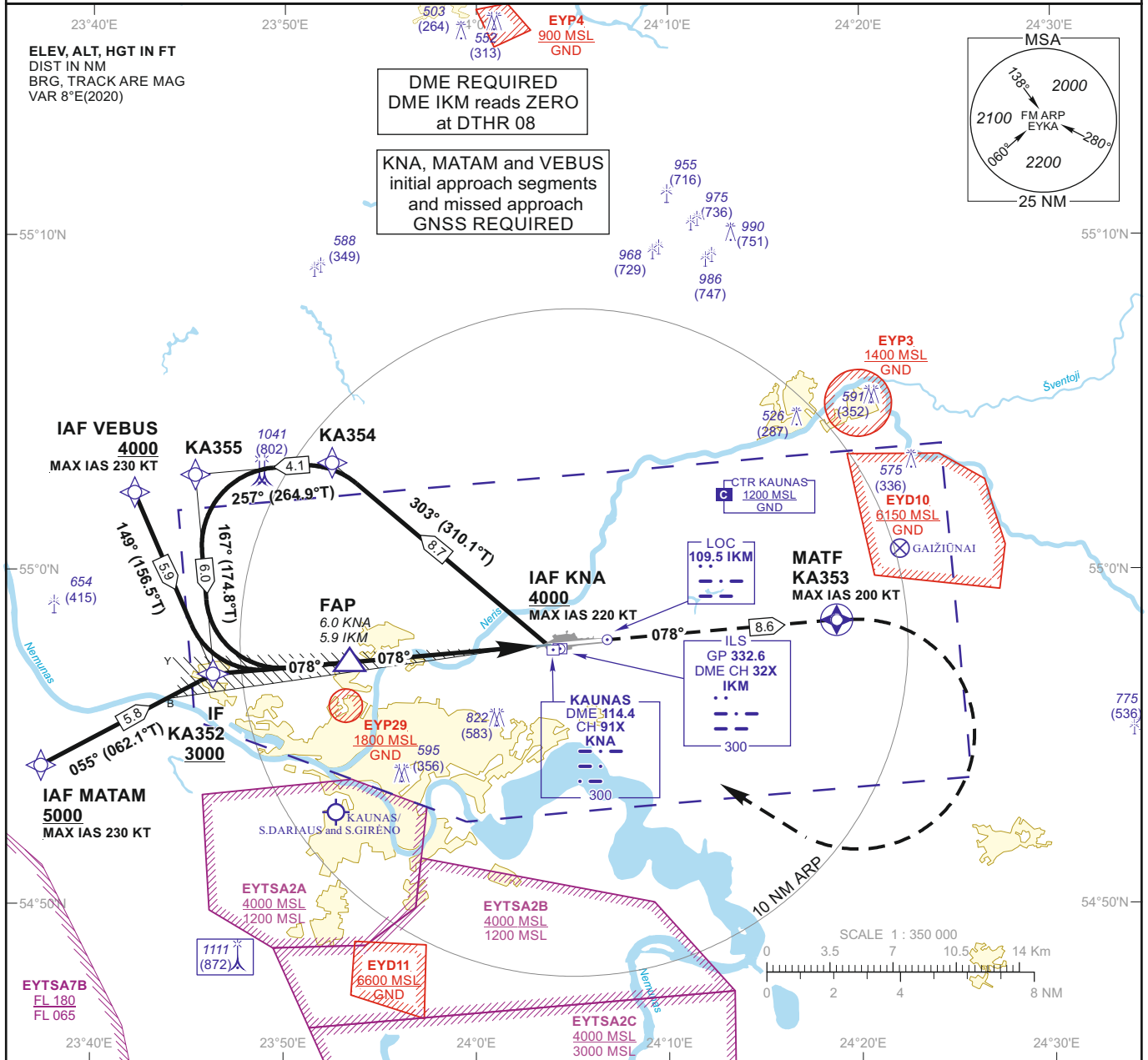


**INSTRUMENT APPROACH CHART - ICAO**

**AERODROME ELEV 259**  
 HEIGHTS RELATED TO  
 DTHR RWY 08 - ELEV 239

TWR 124.205  
 118.505  
 ATIS 129.055

**KAUNAS (EYKA)  
 ILS Z RWY 08  
 (CAT A/B/C/D)**



OCA(OCH)	STRAIGHT-IN APPROACH	DIST DME IKM				Altitude				Height			
		A	B	C	D	5	4	3	2	(1631)	(1321)	(1001)	(691)
ILS CAT I		505 (266)	518 (279)	526 (287)	536 (297)	1870	1560	1240	930				
CIRCLING		730 (470)	760 (500)	1230 (970)	not authorized								
GS		Kts		80	100	120	140	160	180				
FAP-DTHR		5.9 NM		min:sec		4:25	3:32	2:57	2:32	2:13	1:58		
Rate of descent (5.2%)		ft/min		415	520	625	730	835	940				

**INSTRUMENT  
APPROACH  
CHART - ICAO**

**AERODROME ELEV 259**  
HEIGHTS RELATED TO  
DTHR RWY 08 - ELEV 239

**KAUNAS (EYKA)  
ILS Z RWY 08  
(CAT A/B/C/D)**

**TABULAR DESCRIPTION**

**IAF KNA, INITIAL APPROACH**

Serial Number	Path Descriptor	Waypoint Identifier	Fly-over	Course/Track °M(°T)	Magnetic Variation	Distance (NM)/ Time	Turn Direction	Altitude (FT)/ Flight level	Speed (KT)	VPA/TCH	Navigation Specification
001	IF	KNA	—	—	7.5	—	—	+4000	-220	—	RNAV 1
002	TF	KA354	—	303(310.1)	7.5	8.7	—	—	—	—	RNAV 1
003	TF	KA355	—	257(264.9)	7.5	4.1	—	—	—	—	RNAV 1
004	TF	KA352	—	167(174.8)	7.5	6.0	—	+3000	—	—	RNAV 1

**IAF MATAM, INITIAL APPROACH**

Serial Number	Path Descriptor	Waypoint Identifier	Fly-over	Course/Track °M(°T)	Magnetic Variation	Distance (NM)/ Time	Turn Direction	Altitude (FT)/ Flight level	Speed (KT)	VPA/TCH	Navigation Specification
001	IF	MATAM	—	—	7.5	—	—	+5000	-230	—	RNAV 1
002	TF	KA352	—	055(062.1)	7.5	5.8	—	+3000	—	—	RNAV 1

**IAF VEBUS, INITIAL APPROACH**

Serial Number	Path Descriptor	Waypoint Identifier	Fly-over	Course/Track °M(°T)	Magnetic Variation	Distance (NM)/ Time	Turn Direction	Altitude (FT)/ Flight level	Speed (KT)	VPA/TCH	Navigation Specification
001	IF	VEBUS	—	—	7.5	—	—	+4000	-230	—	RNAV 1
002	TF	KA352	—	149(156.5)	7.5	5.9	—	+3000	—	—	RNAV 1

**MISSED APPROACH**

001	—	RW08	—	—	7.5	—	—	—	—	—	RNAV 1
002	CF	KA353	Y	078(085.27)	7.5	8.60	—	—	-200	—	RNAV 1
003	DF	KNA	—	—	7.5	—	R	+4000	-220	—	RNAV 1

FIX/POINTS	COORDINATES	FIX FORMATION
MATAM (IAF)	54 54 08.9N 023 37 22.7E	
VEBUS (IAF)	55 02 19.2N 023 42 11.7E	
KNA (IAF)	54 57 37.4N 024 03 59.1E	
KA354	55 03 12.8N 023 52 27.9E	
KA355	55 02 51.2N 023 45 21.8E	
KA352 (IF)	54 56 52.8N 023 46 18.3E	10.22 NM KNA ; BRG 077.57° / 10.15 NM IKM
FAP	54 57 15.6N 023 53 38.8E	5.97 NM KNA ; BRG 077.57° / 5.90 NM IKM
RW08 (DTHR)	54 57 46.44N 024 03 50.94E	
KA353 (MATF)	54 58 29.9N 024 18 43.4E	
DME IKM	54 57 42.8N 024 0408.4E	
LOC IKM	54 57 55.25N 024 06 49.06E	