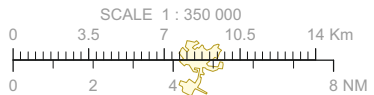
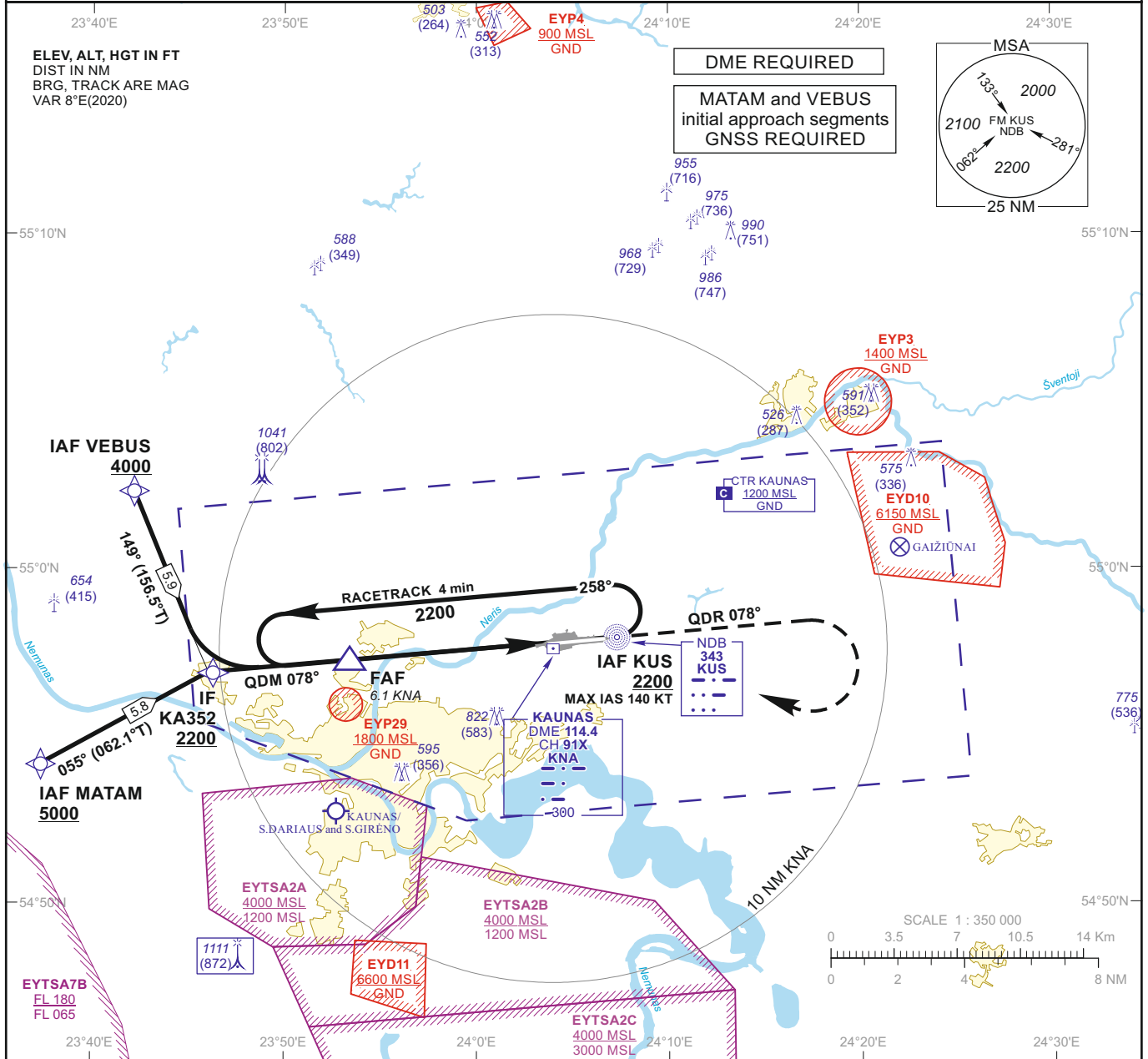


**INSTRUMENT APPROACH CHART - ICAO**

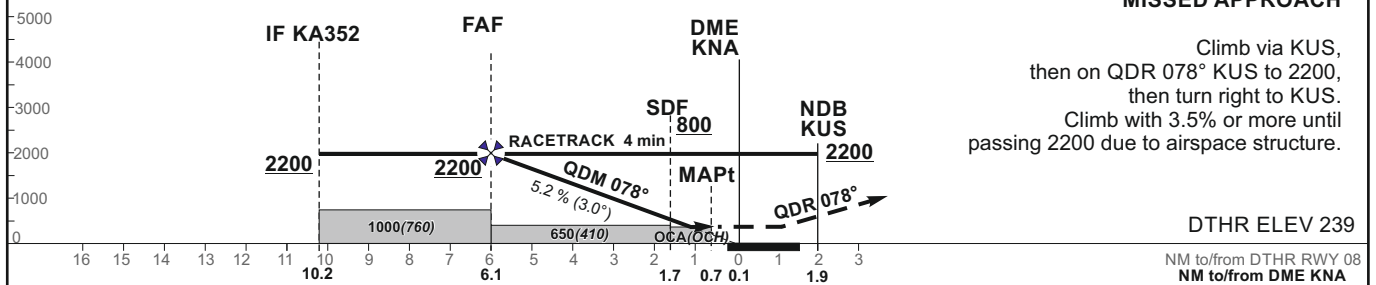
**AERODROME ELEV 259**  
 HEIGHTS RELATED TO  
 DTHR RWY 08 - ELEV 239

TWR 124.205  
 118.505  
 ATIS 129.055

**KAUNAS (EYKA)**  
**NDB Z RWY 08**  
**(CAT A/B)**



TRANSITION ALT 5000



OCA(OCH)	STRAIGHT-IN APPROACH	A		B		DIST DME KNA							
		NDB	640 (400)	650 (410)	Altitude	1850	1530	1220	900				
	NDB (when SDF not received)				Height	(1611)	(1291)	(981)	(661)				
	CIRCLING		730 (470)	760 (500)	Timing not authorized for defining the MAPt								
					GS	Kts	80	100	120	140	160	180	
					FAF - MAPt	5.4 NM	min:sec	4:03	3:14	2:42	2:19	2:02	1:48
					Rate of descent (5.2%)	ft/min	415	520	625	730	835	940	

For data tabulation see verso

Changes: EYP37 and EYP38 withdrawn; OCA(H); SDF and MAPt position; obstacles; scale.

INSTRUMENT  
APPROACH  
CHART - ICAO

**AERODROME ELEV 259**  
HEIGHTS RELATED TO  
DTHR RWY 08 - ELEV 239

**KAUNAS (EYKA)**  
**NDB Z RWY 08**  
**(CAT A/B)**

**TABULAR DESCRIPTION**

**IAF MATAM, INITIAL APPROACH**

Serial Number	Path Descriptor	Waypoint Identifier	Fly-over	Course/Track °M(°T)	Magnetic Variation	Distance (NM)/ Time	Turn Direction	Altitude (FT)/ Flight level	Speed (KT)	VPA/TCH	Navigation Specification
001	IF	MATAM	—	—	7.5	—	—	+5000	—	—	RNAV 1
002	TF	KA352	—	055(062.1)	7.5	5.8	—	+2200	—	—	RNAV 1

**IAF VEBUS, INITIAL APPROACH**

Serial Number	Path Descriptor	Waypoint Identifier	Fly-over	Course/Track °M(°T)	Magnetic Variation	Distance (NM)/ Time	Turn Direction	Altitude (FT)/ Flight level	Speed (KT)	VPA/TCH	Navigation Specification
001	IF	VEBUS	—	—	7.5	—	—	+4000	—	—	RNAV 1
002	TF	KA352	—	149(156.5)	7.5	5.9	—	+2200	—	—	RNAV 1

**NDB INSTRUMENT APPROACH from IAFs(KUS, MATAM, VEBUS)**

FIX/POINTS	COORDINATES	FIX FORMATION
MATAM (IAF)	54 54 08.9N 023 37 22.7E	BRG 070.25° KUS / 15.74 NM KNA
VEBUS (IAF)	55 02 19.2N 023 42 11.7E	BRG 099.50° KUS / 13.40 NM KNA
KUS (IAF)	54 57 56.6N 024 07 18.7E	1.94 NM KNA
KA352 (IF)	54 56 52.8N 023 46 18.3E	BRG 077.59° KUS / 10.22 NM KNA
FAF	54 57 14.9N 023 53 23.4E	BRG 077.61° KUS / 6.12 NM KNA
SDF	54 57 38.1N 024 01 03.0E	BRG 077.61° KUS / 1.69 NM KNA
MAPt	54 57 43.3N 024 02 48.7E	BRG 077.61° KUS / 0.68 NM KNA
DTHR RWY 08	54 57 46.44N 024 03 50.94E	
KNA	54 57 37.4N 024 03 59.1E	

Final approach descent angle: 3.00°