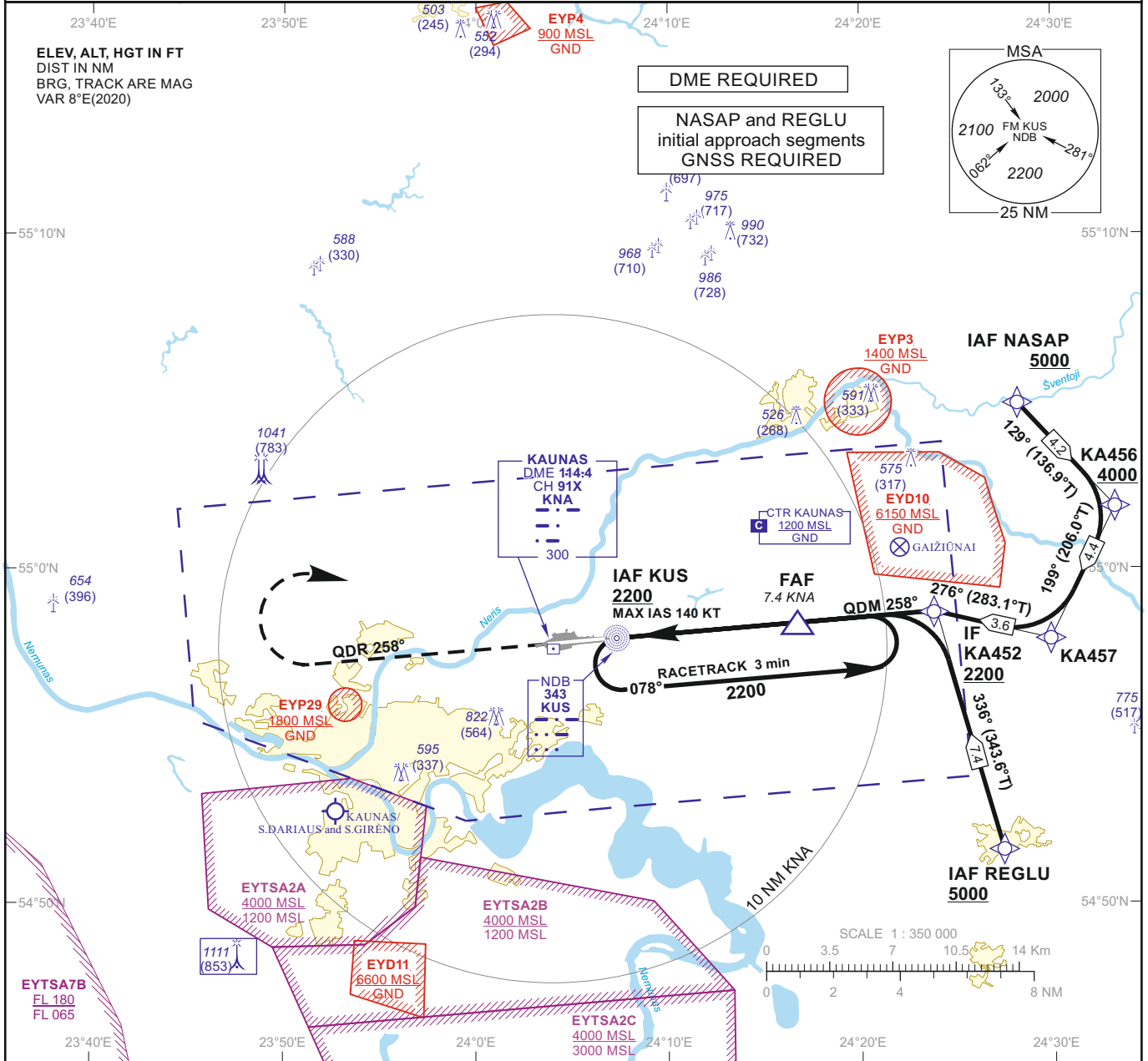


**INSTRUMENT APPROACH CHART - ICAO**

**AERODROME ELEV 259**  
 HEIGHTS RELATED TO  
 DTHR RWY 26 - ELEV 258

TWR 124.205  
 118.505  
 ATIS 129.055

**KAUNAS (EYKA)  
 NDB Z RWY 26  
 (CAT A/B)**

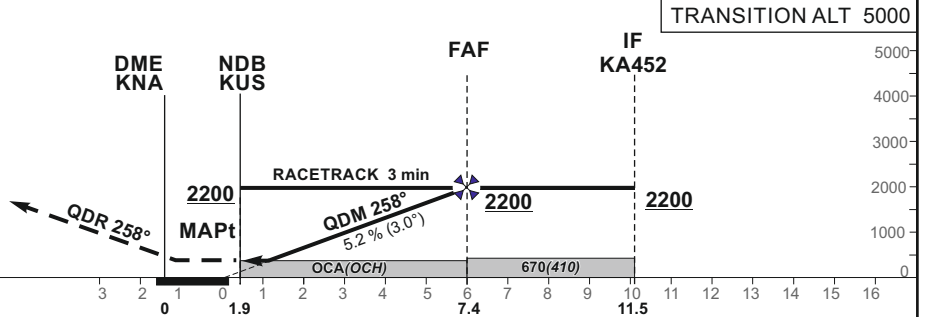


**MISSED APPROACH**

Climb on QDR 258° KUS to 2200,  
 then turn right to KUS.  
 Climb with 3.5% or more until  
 passing 2200 due to airspace structure.

DTHR ELEV 258

NM to/from DTHR RWY 26  
 NM to/from DME KNA



OCA(OCH)	STRAIGHT-IN APPROACH	A		B		DIST DME KNA							
		640 (390)		760 (500)		7	6	5	4	3			
	NDB	640 (390)		760 (500)		Altitude	2090	1770	1460	1140	830		
		730 (470)		760 (500)		Height	(1832)	(1512)	(1202)	(882)	(572)		
Timing not authorized for defining the MAPt													
CIRCLING		730 (470)		760 (500)		GS	Kts	80	100	120	140	160	180
						FAF - MAPt 5.4 NM	min:sec	4:03	3:14	2:42	2:19	2:02	1:48
						Rate of descent (5.2%)	ft/min	415	520	625	730	835	940

For data tabulation see verso

Changes: EYP37, EYP38 and SDF withdrawn; OCA(H); obstacles; scale.

**INSTRUMENT  
APPROACH  
CHART - ICAO**

**AERODROME ELEV 259**  
HEIGHTS RELATED TO  
DTHR RWY 26 - ELEV 258

**KAUNAS (EYKA)  
NDB Z RWY 26  
(CAT A/B)**

**TABULAR DESCRIPTION**

**IAF NASAP, INITIAL APPROACH**

Serial Number	Path Descriptor	Waypoint Identifier	Fly-over	Course/Track °M(°T)	Magnetic Variation	Distance (NM)/ Time	Turn Direction	Altitude (FT)/ Flight level	Speed (KT)	VPA/TCH	Navigation Specification
001	IF	NASAP	—	—	7.5	—	—	+5000	—	—	RNAV 1
002	TF	KA456	—	129(136.9)	7.5	4.2	—	+4000	—	—	RNAV 1
003	TF	KA457	—	199(206.0)	7.5	4.4	—	—	—	—	RNAV 1
004	TF	KA452	—	276(283.1)	7.5	3.6	—	+2200	—	—	RNAV 1

**IAF REGLU, INITIAL APPROACH**

Serial Number	Path Descriptor	Waypoint Identifier	Fly-over	Course/Track °M(°T)	Magnetic Variation	Distance (NM)/ Time	Turn Direction	Altitude (FT)/ Flight level	Speed (KT)	VPA/TCH	Navigation Specification
001	IF	REGLU	—	—	7.5	—	—	+5000	—	—	RNAV 1
002	TF	KA452	—	336(343.6)	7.5	7.4	—	+2200	—	—	RNAV 1

**NDB INSTRUMENT APPROACH from IAFs(KUS, NASAP, REGLU)**

FIX/POINTS	COORDINATES	FIX FORMATION
NASAP (IAF)	55 04 57.2N 024 28 10.6E	BRG 232.01° KUS / 15.74 NM KNA
REGLU (IAF)	54 51 37.2N 024 27 23.7E	BRG 290.99° KUS / 14.79 NM KNA
KA456	55 01 52.0N 024 33 12.6E	BRG 247.53° KUS / 17.36 NM KNA
KA457	54 57 55.1N 024 29 51.4E	BRG 262.43° KUS / 14.92 NM KNA
KA452 (IF)	54 58 44.2N 024 23 46.4E	BRG 257.57° KUS / 11.46 NM KNA
FAF	54 58 24.1N 024 16 41.1E	BRG 257.56° KUS / 7.36 NM KNA
NDB KUS (IAF, MAPt)	54 57 56.6N 024 07 18.7E	1.94 NM KNA
KNA	54 57 37.4N 024 03 59.1E	
DTHR RWY 26	54 57 53.79N 024 06 19.46E	
Final approach descent angle: 3.00°		