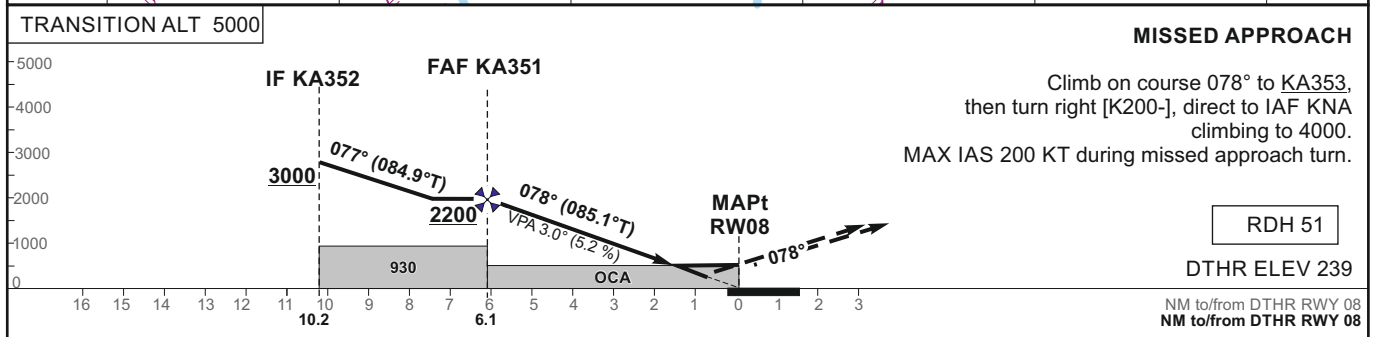
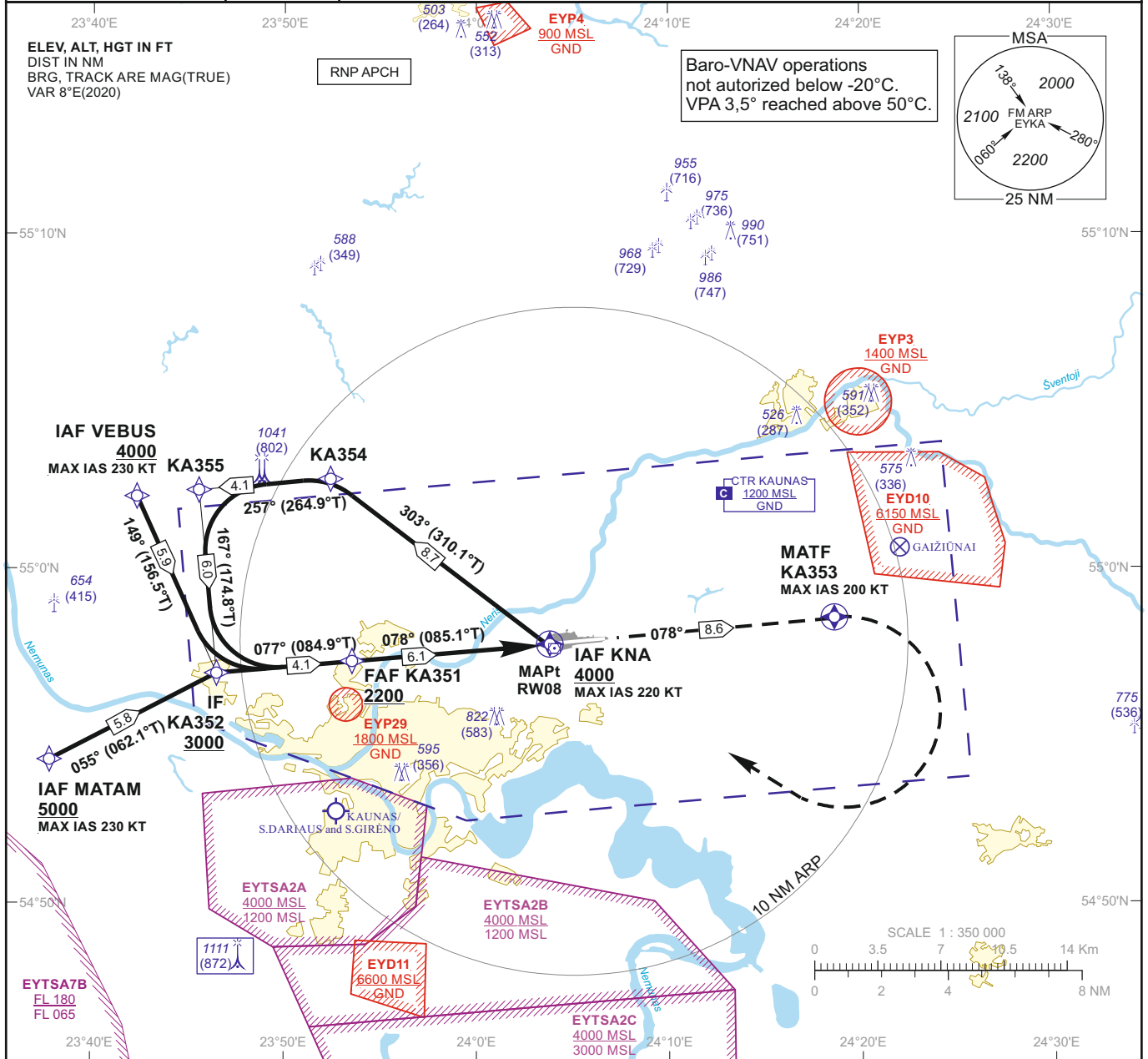


<b>INSTRUMENT APPROACH CHART - ICAO</b>	<b>EGNOS CH 96325 E08A</b>	<b>AERODROME ELEV 259</b> HEIGHTS RELATED TO DTHR RWY 08 - ELEV 239	TWR 124.205 118.505 ATIS 129.055	<b>KAUNAS (EYKA) RNP RWY 08 (CAT A/B/C/D)</b>
---	----------------------------	--	--	---



OCA(OCH)		A	B	C	D	DIST TO RW08								
		513 (274)	526 (287)	534 (295)	544 (305)	5	4	3	2					
STRAIGHT-IN APPROACH	LPV	513 (274)	526 (287)	534 (295)	544 (305)	Altitude				1870	1560	1240	930	
	LNAV/VNAV	520 (280)	530 (290)	540 (300)	550 (310)	Timing not authorized for defining the MAPt								
	LNAV	640 (400)												
CIRCLING		730 (470)	760 (500)	1230 (970)	not authorized	GS	Kts	80	100	120	140	160	180	
						FAF-MAPt	6.1 NM	min:sec	4:35	3:40	3:03	2:37	2:17	2:02
						Rate of descent (5.2%)	ft/min	415	520	625	730	835	940	

For data tabulation see verso

Changes: EYP37 and EYP38 withdrawn; OCA(H); obstacles; scale.

<b>INSTRUMENT APPROACH CHART - ICAO</b>	<b>EGNOS CH 96325 E08A</b>	<b>AERODROME ELEV 259</b> HEIGHTS RELATED TO DTHR RWY 08 - ELEV 239	<b>KAUNAS (EYKA) RNP RWY 08 (CAT A/B/C/D)</b>
---	------------------------------------	---	---

## TABULAR DESCRIPTION

**IAF KNA**

Serial Number	Path Descriptor	Waypoint Identifier	Fly-over	Course/Track °M(°T)	Magnetic Variation	Distance (NM)/ Time	Turn Direction	Altitude (FT)/ Flight level	Speed (KT)	VPA/TCH	Navigation Specification
001	IF	KNA	—	—	7.5	—	—	+4000	-220	—	RNP APCH
002	TF	KA354	—	303(310.1)	7.5	8.7	—	—	—	—	RNP APCH
003	TF	KA355	—	257(264.9)	7.5	4.1	—	—	—	—	RNP APCH
004	TF	KA352	—	167(174.8)	7.5	6.0	—	+3000	—	—	RNP APCH

**IAF MATAM**

Serial Number	Path Descriptor	Waypoint Identifier	Fly-over	Course/Track °M(°T)	Magnetic Variation	Distance (NM)/ Time	Turn Direction	Altitude (FT)/ Flight level	Speed (KT)	VPA/TCH	Navigation Specification
001	IF	MATAM	—	—	7.5	—	—	+5000	-230	—	RNP APCH
002	TF	KA352	—	055(062.1)	7.5	5.8	—	+3000	—	—	RNP APCH

**IAF VEBUS**

Serial Number	Path Descriptor	Waypoint Identifier	Fly-over	Course/Track °M(°T)	Magnetic Variation	Distance (NM)/ Time	Turn Direction	Altitude (FT)/ Flight level	Speed (KT)	VPA/TCH	Navigation Specification
001	IF	VEBUS	—	—	7.5	—	—	+4000	-230	—	RNP APCH
002	TF	KA352	—	149(156.5)	7.5	5.9	—	+3000	—	—	RNP APCH
001	IF	KA352	—	—	7.5	—	—	+3000	—	—	RNP APCH
002	TF	KA351	—	077(084.92)	7.5	4.11	—	+2200	—	—	RNP APCH
003	TF	RW08	Y	078(085.06)	7.5	6.05	—	@290	—	-3.00/51	RNP APCH
004	CF	KA353	Y	078(085.27)	7.5	8.60	—	—	-200	—	RNP APCH
005	DF	KNA	—	—	7.5	—	R	+4000	-220	—	RNP APCH

## WAYPOINT COORDINATES

FIX/POINTS	COORDINATES	FIX/POINTS	COORDINATES
MATAM (IAF)	54 54 08.9N 023 37 22.7E	KA352 (IF)	54 56 52.8N 023 46 18.3E
VEBUS (IAF)	55 02 19.2N 023 42 11.7E	FAP	54 57 15.6N 023 53 38.8E
KNA (IAF)	54 57 37.4N 024 03 59.1E	KA351 (FAF)	54 57 14.8N 023 53 23.9E
KA354	55 03 12.8N 023 52 27.9E	RW08 (MAPt)	54 57 46.4N 024 03 50.9E
KA355	55 02 51.2N 023 45 21.8E	KA353 (MATF)	54 58 29.9N 024 18 43.4E

INSTRUMENT APPROACH CHART - ICAO	EGNOS CH 96325 E08A	AERODROME ELEV 259 HEIGHTS RELATED TO DTHR RWY 08 - ELEV 239	KAUNAS (EYKA) RNP RWY 08 (CAT A/B/C/D)
--	---------------------------	--	--

**SBAS FAS Data Block  
Input Data**

Parameters	Values
Operation	0
SBAS Provider Identifier	1
Airport Identifier	EYKA
Runway Number	08
Runway Letter	0
Approach Performance Designator	0
Route Indicator	
Reference Path Data Selector	0
Reference Path Identifier	E08A
LTP/FTP Latitude	545746.4355N
LTP/FTP Longitude	0240350.9440E
LTP/FTP Height above ellipsoid (meters)	97.3
FPAP Latitude	545754.6170N
Delta FPAP Latitude (seconds)	8.1815
FPAP Longitude	0240636.2230E
Delta FPAP Longitude (seconds)	165.2790
Approach Threshold Crossing Height (TCH)	51.0
Approach TCH Units Selector	0
Glidepath Angle (GPA)	3.00
Course Width at threshold (meters)	105.00
Length Offset (meters)	0
Horizontal Alert Limit (HAL) (meters)	40.0
Vertical Alert Limit (VAL) (meters)	50.0
Final Approach Segment CRC	D5948071

**Output Data**

Data Block	10 01 0B 19 05 08 00 00 01 38 30 05 87 67 96 17 40 C4 53 0A CD 17 EB 3F 00 3E 0B 05 FE 01 2C 01 64 00 C8 FA D5 94 80 71
------------	--

**Required Additional Data (not CRC wrapped)**

ICAO Code	EY
LTP/FTP Orthometric Height (meters)	72.7
FPAP Orthometric Height (meters)	78.9

SPECIALUSIS TUŠČIAS PUSLAPIS

*THIS PAGE INTENTIONALLY LEFT BLANK*