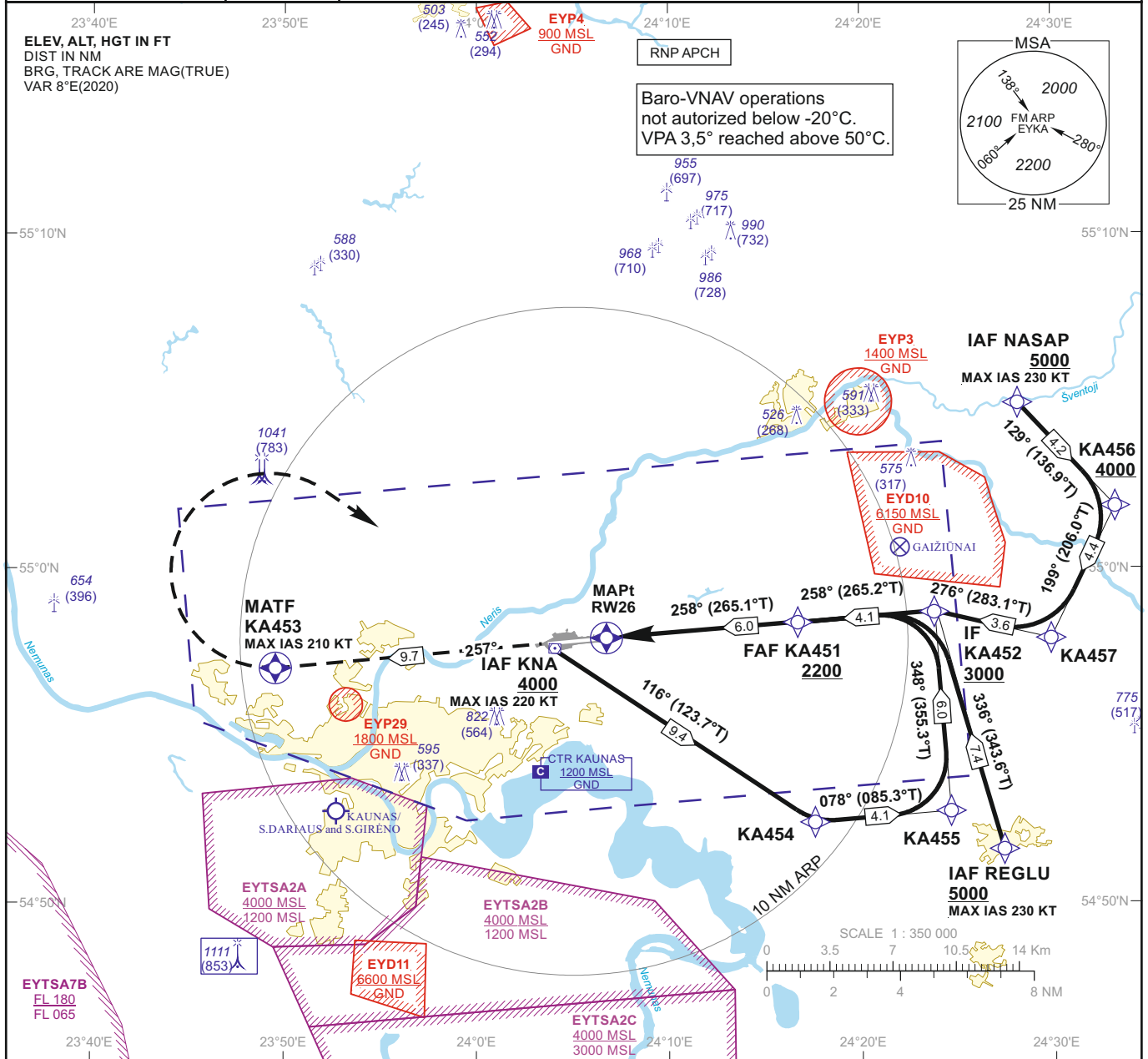


| | | | | |
|---|----------------------------|---|--|---|
| INSTRUMENT APPROACH CHART - ICAO | EGNOS CH 54506 E26A | AERODROME ELEV 259 HEIGHTS RELATED TO DTHR RWY 26 - ELEV 258 | TWR 124.205 118.505 ATIS 129.055 | KAUNAS (EYKA) RNP RWY 26 (CAT A/B/C/D) |
|---|----------------------------|---|--|---|



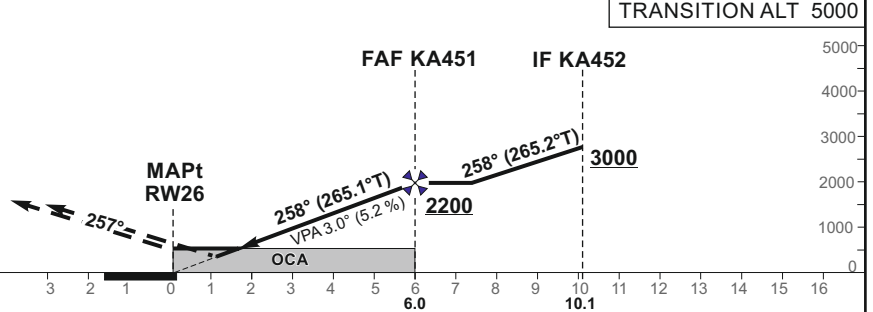
MISSED APPROACH

Climb on course 257° to KA453, then turn right [K210-], direct to IAF KNA climbing to 4000.
MAX IAS 210 KT during missed approach turn.

RDH 52

DTHR ELEV 258

NM to/from DTHR RWY 26
NM to/from DTHR RWY 26



| OCA(OCH) | | A | B | C | D | DIST TO RW26 | | | | | | | | | |
|----------------------|-----------|-----------|-----------|------------|----------------|---|---------|------|------|------|------|------|------|------|-----|
| | | 524 (266) | 536 (278) | 544 (286) | 554 (296) | 5 | 4 | 3 | 2 | 1 | 0 | | | | |
| STRAIGHT-IN APPROACH | LPV | 524 (266) | 536 (278) | 544 (286) | 554 (296) | Altitude | | | | | | 1890 | 1580 | 1260 | 950 |
| | LNAV/VNAV | 530 (270) | 540 (280) | 550 (290) | 560 (300) | Timing not authorized for defining the MAPt | | | | | | | | | |
| | LNAV | 640 (390) | | | | | | | | | | | | | |
| CIRCLING | | 730 (470) | 760 (500) | 1230 (970) | not authorized | GS | Kts | 80 | 100 | 120 | 140 | 160 | 180 | | |
| | | | | | | FAF-MAPt 6.0 NM | min:sec | 4:30 | 3:36 | 3:00 | 2:34 | 2:15 | 2:00 | | |
| | | | | | | Rate of descent (5.2%) | ft/min | 415 | 520 | 625 | 730 | 835 | 940 | | |

For data tabulation see verso

Changes: EYP37 and EYP38 withdrawn; OCA(H); obstacles; scale.

INSTRUMENT
APPROACH
CHART - ICAOEGNOS
CH 54506
E26AAERODROME ELEV 259
HEIGHTS RELATED TO
DTHR RWY 26 - ELEV 258KAUNAS (EYKA)
RNP RWY 26
(CAT A/B/C/D)

TABULAR DESCRIPTION

IAF KNA

| Serial Number | Path Descriptor | Waypoint Identifier | Fly-over | Course/Track °M(°T) | Magnetic Variation | Distance (NM)/ Time | Turn Direction | Altitude (FT)/ Flight level | Speed (KT) | VPA/TCH | Navigation Specification |
|---------------|-----------------|---------------------|----------|---------------------|--------------------|---------------------|----------------|-----------------------------|------------|---------|--------------------------|
| 001 | IF | KNA | — | — | 7.5 | — | — | +4000 | -220 | — | RNP APCH |
| 002 | TF | KA454 | — | 116(123.7) | 7.5 | 9.4 | — | — | — | — | RNP APCH |
| 003 | TF | KA455 | — | 078(085.3) | 7.5 | 4.1 | — | — | — | — | RNP APCH |
| 004 | TF | KA452 | — | 348(355.3) | 7.5 | 6.0 | — | +3000 | — | — | RNP APCH |

IAF NASAP

| Serial Number | Path Descriptor | Waypoint Identifier | Fly-over | Course/Track °M(°T) | Magnetic Variation | Distance (NM)/ Time | Turn Direction | Altitude (FT)/ Flight level | Speed (KT) | VPA/TCH | Navigation Specification |
|---------------|-----------------|---------------------|----------|---------------------|--------------------|---------------------|----------------|-----------------------------|------------|---------|--------------------------|
| 001 | IF | NASAP | — | — | 7.5 | — | — | +5000 | -230 | — | RNP APCH |
| 002 | TF | KA456 | — | 129(136.9) | 7.5 | 4.2 | — | +4000 | — | — | RNP APCH |
| 003 | TF | KA457 | — | 199(206.0) | 7.5 | 4.4 | — | — | — | — | RNP APCH |
| 004 | TF | KA452 | — | 276(283.1) | 7.5 | 3.6 | — | +3000 | — | — | RNP APCH |

IAF REGLU

| Serial Number | Path Descriptor | Waypoint Identifier | Fly-over | Course/Track °M(°T) | Magnetic Variation | Distance (NM)/ Time | Turn Direction | Altitude (FT)/ Flight level | Speed (KT) | VPA/TCH | Navigation Specification |
|---------------|-----------------|---------------------|----------|---------------------|--------------------|---------------------|----------------|-----------------------------|------------|----------|--------------------------|
| 001 | IF | REGLU | — | — | 7.5 | — | — | +5000 | -230 | — | RNP APCH |
| 002 | TF | KA452 | — | 336(343.6) | 7.5 | 7.4 | — | +3000 | — | — | RNP APCH |
| 001 | IF | KA452 | — | — | 7.5 | — | — | +3000 | — | — | RNP APCH |
| 002 | TF | KA451 | — | 258(265.24) | 7.5 | 4.11 | — | +2200 | — | — | RNP APCH |
| 003 | TF | RW26 | Y | 258(265.10) | 7.5 | 5.98 | — | @310 | — | -3.00/52 | RNP APCH |
| 004 | CF | KA453 | Y | 257(264.87) | 7.5 | 9.7 | — | — | -210 | — | RNP APCH |
| 005 | DF | KNA | — | — | 7.5 | — | R | +4000 | -220 | — | RNP APCH |

WAYPOINT COORDINATES

| FIX/POINTS | COORDINATES | FIX/POINTS | COORDINATES |
|-------------|--------------------------|--------------|--------------------------|
| NASAP (IAF) | 55 04 57.2N 024 28 10.6E | KA457 | 54 57 55.1N 024 29 51.4E |
| REGLU (IAF) | 54 51 37.2N 024 27 23.7E | KA452 (IF) | 54 58 44.2N 024 23 46.4E |
| KNA (IAF) | 54 57 37.4N 024 03 59.1E | FAP | 54 58 23.3N 024 16 25.6E |
| KA454 | 54 52 26.0N 024 17 33.7E | KA451 (FAF) | 54 58 24.0N 024 16 40.2E |
| KA455 | 54 52 46.2N 024 24 37.3E | RW26 (MAPt) | 54 57 53.8N 024 06 19.5E |
| KA456 | 55 01 52.0N 024 33 12.6E | KA453 (MATF) | 54 57 03.0N 023 49 33.4E |

| | | | |
|--|---------------------------|--|--|
| INSTRUMENT APPROACH CHART - ICAO | EGNOS CH 54506 E26A | AERODROME ELEV 259 HEIGHTS RELATED TO DTHR RWY 26 - ELEV 258 | KAUNAS (EYKA) RNP RWY 26 (CAT A/B/C/D) |
|--|---------------------------|--|--|

**SBAS FAS Data Block
Input Data**

| Parameters | Values |
|--|---------------|
| Operation | 0 |
| SBAS Provider Identifier | 1 |
| Airport Identifier | EYKA |
| Runway Number | 26 |
| Runway Letter | 0 |
| Approach Performance Designator | 0 |
| Route Indicator | |
| Reference Path Data Selector | 0 |
| Reference Path Identifier | E26A |
| LTP/FTP Latitude | 545753.7900N |
| LTP/FTP Longitude | 0240619.4615E |
| LTP/FTP Height above ellipsoid (meters) | 103.2 |
| FPAP Latitude | 545745.6035N |
| Delta FPAP Latitude (seconds) | -8.1865 |
| FPAP Longitude | 0240334.2075E |
| Delta FPAP Longitude (seconds) | -165.2540 |
| Approach Threshold Crossing Height (TCH) | 52.0 |
| Approach TCH Units Selector | 0 |
| Glidepath Angle (GPA) | 3.00 |
| Course Width at threshold (meters) | 105.00 |
| Length Offset (meters) | 0 |
| Horizontal Alert Limit (HAL) (meters) | 40.0 |
| Vertical Alert Limit (VAL) (meters) | 50.0 |
| Final Approach Segment CRC | 4892C3A9 |

Output Data

| | |
|------------|--|
| Data Block | 10 01 0B 19 05 1A 00 00 01 36 32 05 FC A0 96 17 8B 4C 58 0A 08 18 0B C0 FF F4 F4 FA 08 02 2C 01 64 00 C8 FA 48 92 C3 A9 |
|------------|--|

Required Additional Data (not CRC wrapped)

| | |
|-------------------------------------|------|
| ICAO Code | EY |
| LTP/FTP Orthometric Height (meters) | 78.7 |
| FPAP Orthometric Height (meters) | 71.4 |

SPECIALUSIS TUŠČIAS PUSLAPIS

THIS PAGE INTENTIONALLY LEFT BLANK