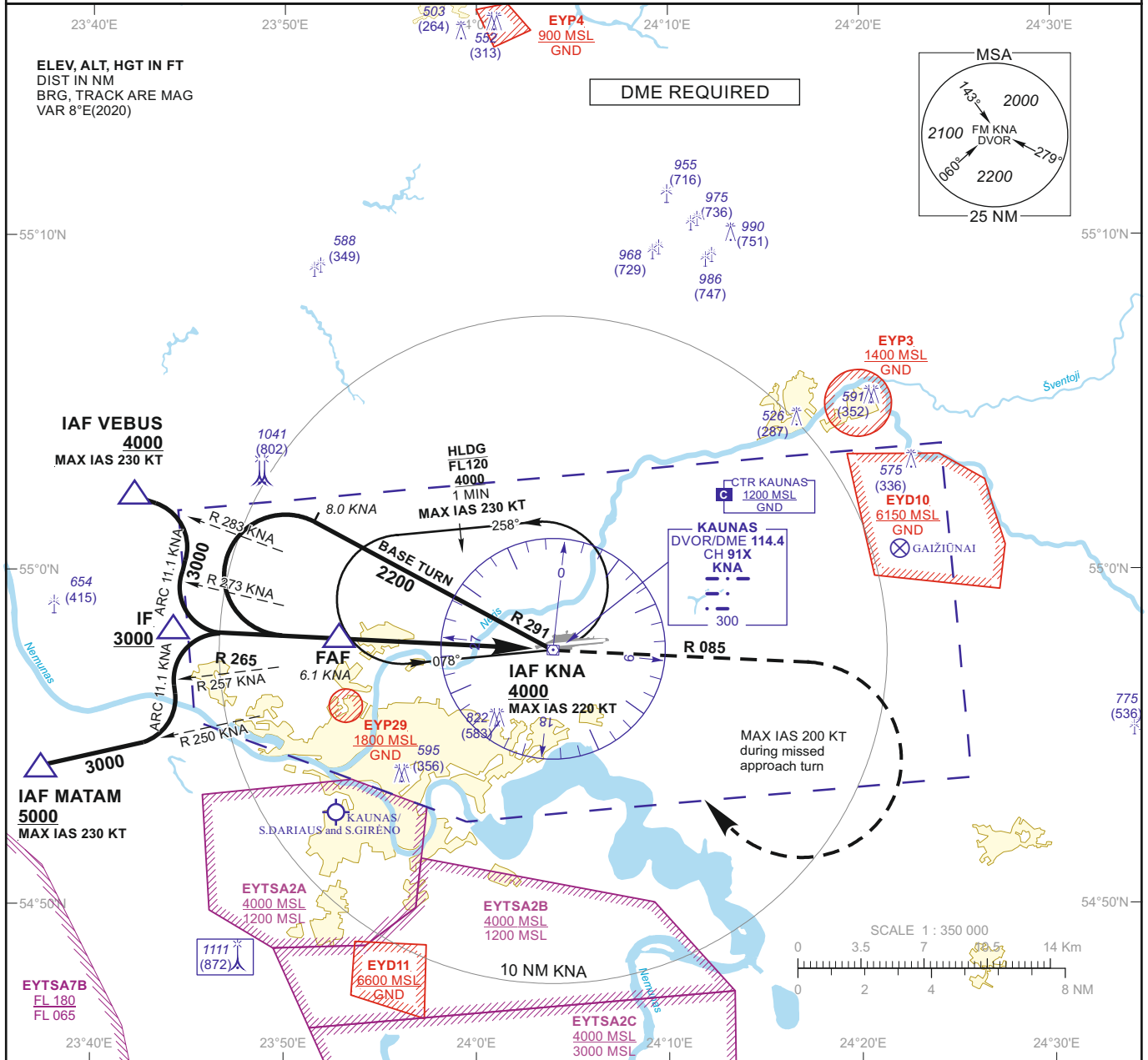


**INSTRUMENT APPROACH CHART - ICAO**

**AERODROME ELEV 259**  
 HEIGHTS RELATED TO  
 DTHR RWY 08 - ELEV 239

TWR 124.205  
 118.505  
 ATIS 129.055

**KAUNAS (EYKA)  
 VOR Y RWY 08  
 (CAT C/D)**



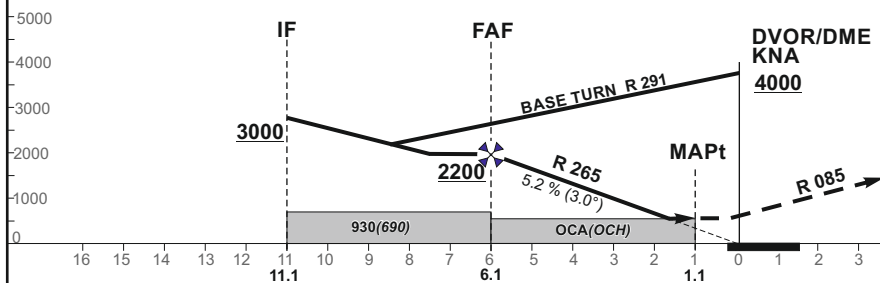
TRANSITION ALT 5000

**MISSED APPROACH**

Climb via KNA, then on R 085 to 2200, then turn right (MAX IAS 200 KT) to KNA climbing to 4000. Climb with 3.5% or more until passing 2200 due to airspace structure.

DTHR ELEV 239

NM to/from DTHR RWY 08  
 NM to/from DME KNA



OCA(OCH)	C	D	DIST DME KNA								
			5	4	3	2					
STRAIGHT-IN APPROACH	VOR	780 (540)	Altitude	1850	1530	1220	900				
CIRCLING	1230 (970)	not authorized	Height	(1611)	(1291)	(981)	(661)				
Timing not authorized for defining the MAPt											
			GS	Kts	80	100	120	140	160	180	
			FAF - MAPt	5.0 NM	min:sec	3:45	3:00	2:30	2:09	1:53	1:40
			Rate of descent (5.2%)	ft/min	415	520	625	730	835	940	

For data tabulation see verso

Changes: EYP37 and EYP38 withdrawn; obstacles; scale; SDF withdrawn.

INSTRUMENT  
APPROACH  
CHART - ICAO

**AERODROME ELEV 259**  
HEIGHTS RELATED TO  
DTHR RWY 08 - ELEV 239

**KAUNAS (EYKA)**  
**VOR Y RWY 08**  
**(CAT C/D)**

TABULAR DESCRIPTION

VOR INSTRUMENT APPROACH from IAFs(KNA, MATAM, VEBUS)

FIX/POINTS	COORDINATES	FIX FORMATION
MATAM (IAF)	54 54 08.9N 023 37 22.7E	BRG 069.87° / 15.74 NM KNA
VEBUS (IAF)	55 02 19.2N 023 42 11.7E	BRG 103.17° / 13.40 NM KNA
KNA (IAF)	54 57 37.4N 024 03 59.1E	
IF	54 58 10.8N 023 44 41.9E	BRG 085.47° / 11.13 NM KNA
FAF	54 57 56.2N 023 53 22.0E	BRG 085.47° / 6.13 NM KNA
MAPt	54 57 41.0N 024 02 00.9E	BRG 085.47° / 1.14 NM KNA
DTHR RWY 08	54 57 46.44N 024 03 50.94E	
Final approach descent angle: 3.00°		