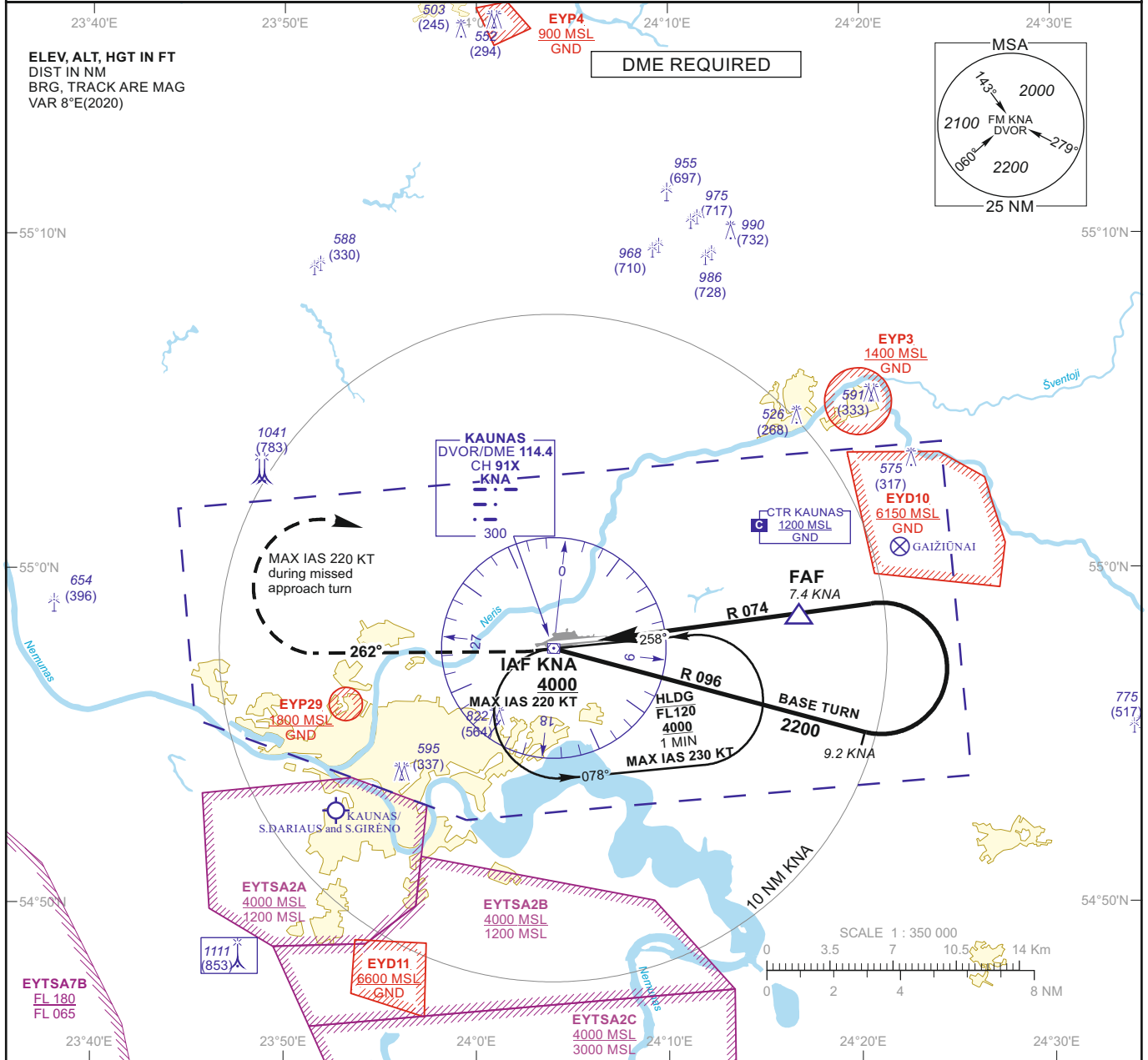


**INSTRUMENT
APPROACH
CHART - ICAO**

AERODROME ELEV 259
HEIGHTS RELATED TO
DTHR RWY 26 - ELEV 258

TWR 124.205
118.505
ATIS 129.055

**KAUNAS (EYKA)
VOR Y RWY 26
(CAT C/D)**

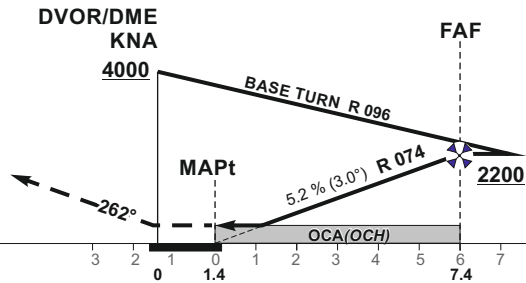


MISSED APPROACH

Climb via KNA, then turn right on track 262° to 2200, then turn right (MAX IAS 220 KT) to KNA climbing to 4000. Climb with 3.5% or more until passing 2200 due to airspace structure.

DTHR ELEV 258

NM to/from DTHR RWY 26
NM to/from DME KNA



TRANSITION ALT 5000

OCA(OCH)		C	D	DIST DME KNA	7	6	5	4	3		
STRAIGHT-IN APPROACH	VOR	640 (390)		Altitude	2090	1770	1460	1140	830		
				Height	(1832)	(1512)	(1202)	(882)	(572)		
CIRCLING		1230 (970)	not authorized	Timing not authorized for defining the MAPt							
				GS	Kts	80	100	120	140	160	180
				FAF-MAPt 6.0 NM	min:sec	4:30	3:36	3:00	2:34	2:15	2:00
				Rate of descent (5.2%)	ft/min	415	520	625	730	835	940

For data tabulation see verso

Changes: EYP37, EYP38 and SDF withdrawn; OCA(H); MAPt position; obstacles; scale.

INSTRUMENT
APPROACH
CHART - ICAO

AERODROME ELEV 259
HEIGHTS RELATED TO
DTHR RWY 26 - ELEV 258

KAUNAS (EYKA)
VOR Y RWY 26
(CAT C/D)

TABULAR DESCRIPTION

VOR INSTRUMENT APPROACH from IAF(KNA)		
FIX/POINTS	COORDINATES	FIX FORMATION
KNA (IAF)	54 57 37.4N 024 03 59.1E	
FAF	54 58 45.8N 024 16 36.6E	BRG 253.47° / 7.37 NM KNA
MAPt	54 57 50.2N 024 06 20.2E	BRG 253.47° / 1.37 NM KNA
DTHR RWY 26	54 57 53.79N 024 06 19.46E	
Final approach descent angle: 3.00°		

Changes: SDF withdrawn; MAPt coordinates and FIX formation.