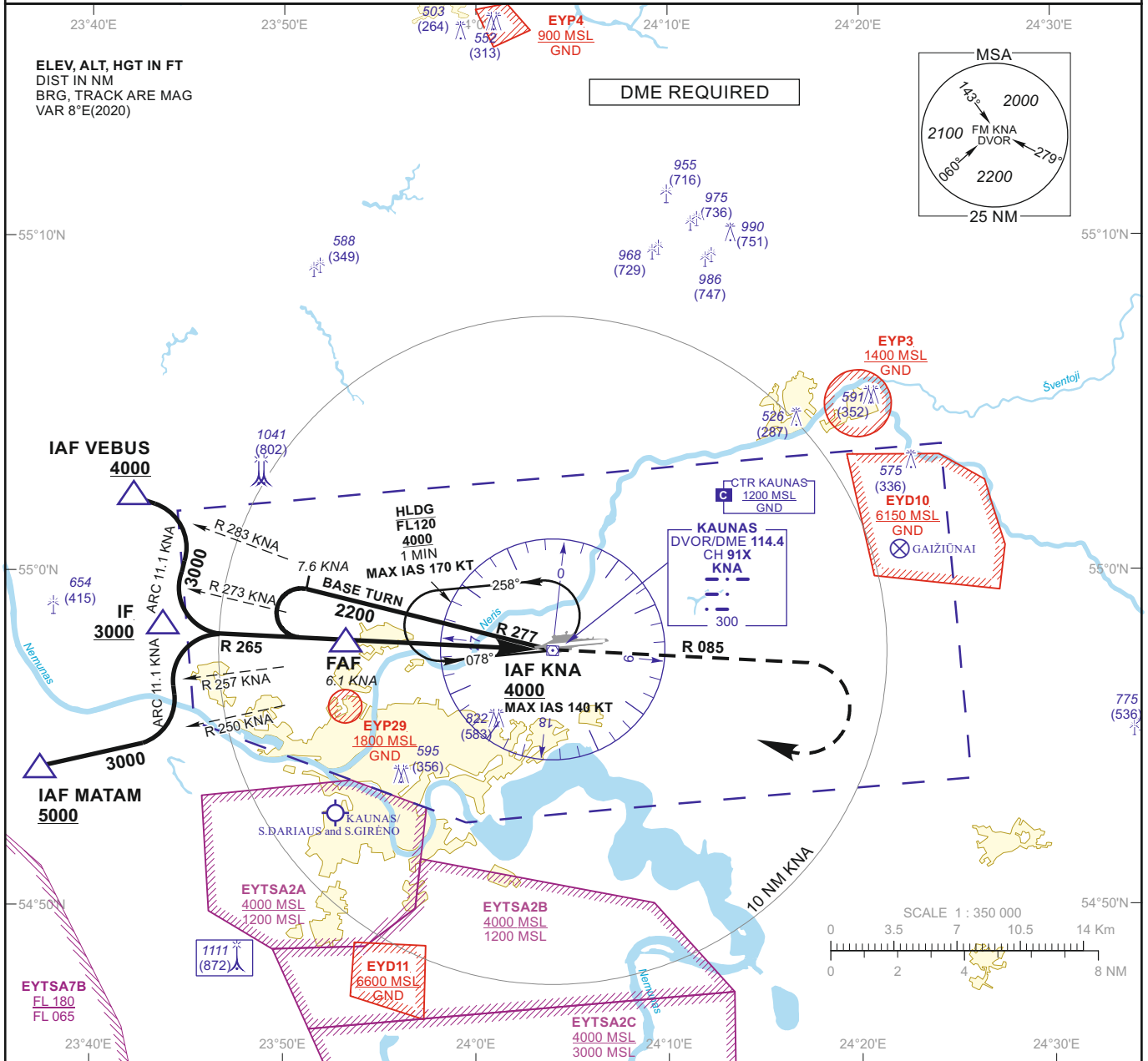


**INSTRUMENT
APPROACH
CHART - ICAO**

AERODROME ELEV 259
HEIGHTS RELATED TO
DTHR RWY 08 - ELEV 239

TWR 124.205
118.505
ATIS 129.055

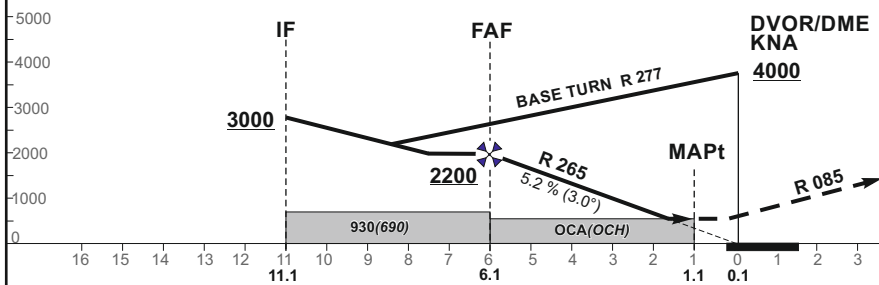
**KAUNAS (EYKA)
VOR Z RWY 08
(CAT A/B)**



TRANSITION ALT 5000

MISSED APPROACH

Climb via KNA, then on R 085 to 2200, then turn right to KNA climbing to 4000. Climb with 3.5% or more until passing 2200 due to airspace structure.



OCA(OCH)		A	B	DIST DME KNA	5	4	3	2
STRAIGHT-IN APPROACH	VOR	780 (540)		Altitude	1850	1530	1220	900
CIRCLING		730 (470)	760 (500)	Height	(1611)	(1291)	(981)	(661)
Timing not authorized for defining the MAPt								
				GS	Kts	80	100	120
				FAF - MAPt 5.0 NM	min:sec	3:45	3:00	2:30
				Rate of descent (5.2%)	ft/min	415	520	625
						730	835	940
For data tabulation see verso								

INSTRUMENT
APPROACH
CHART - ICAO

AERODROME ELEV 259
HEIGHTS RELATED TO
DTHR RWY 08 - ELEV 239

KAUNAS (EYKA)
VOR Z RWY 08
(CAT A/B)

TABULAR DESCRIPTION

VOR INSTRUMENT APPROACH from IAFs(KNA, MATAM, VEBUS)		
FIX/POINTS	COORDINATES	FIX FORMATION
MATAM (IAF)	54 54 08.9N 023 37 22.7E	BRG 069.87° / 15.74 NM KNA
VEBUS (IAF)	55 02 19.2N 023 42 11.7E	BRG 103.17° / 13.40 NM KNA
KNA (IAF)	54 57 37.4N 024 03 59.1E	
IF	54 58 10.8N 023 44 41.9E	BRG 085.47° / 11.13 NM KNA
FAF	54 57 56.2N 023 53 22.0E	BRG 085.47° / 6.13 NM KNA
MAPt	54 57 41.0N 024 02 00.9E	BRG 085.47° / 1.14 NM KNA
DTHR RWY 08	54 57 46.44N 024 03 50.94E	
Final approach descent angle: 3.00°		