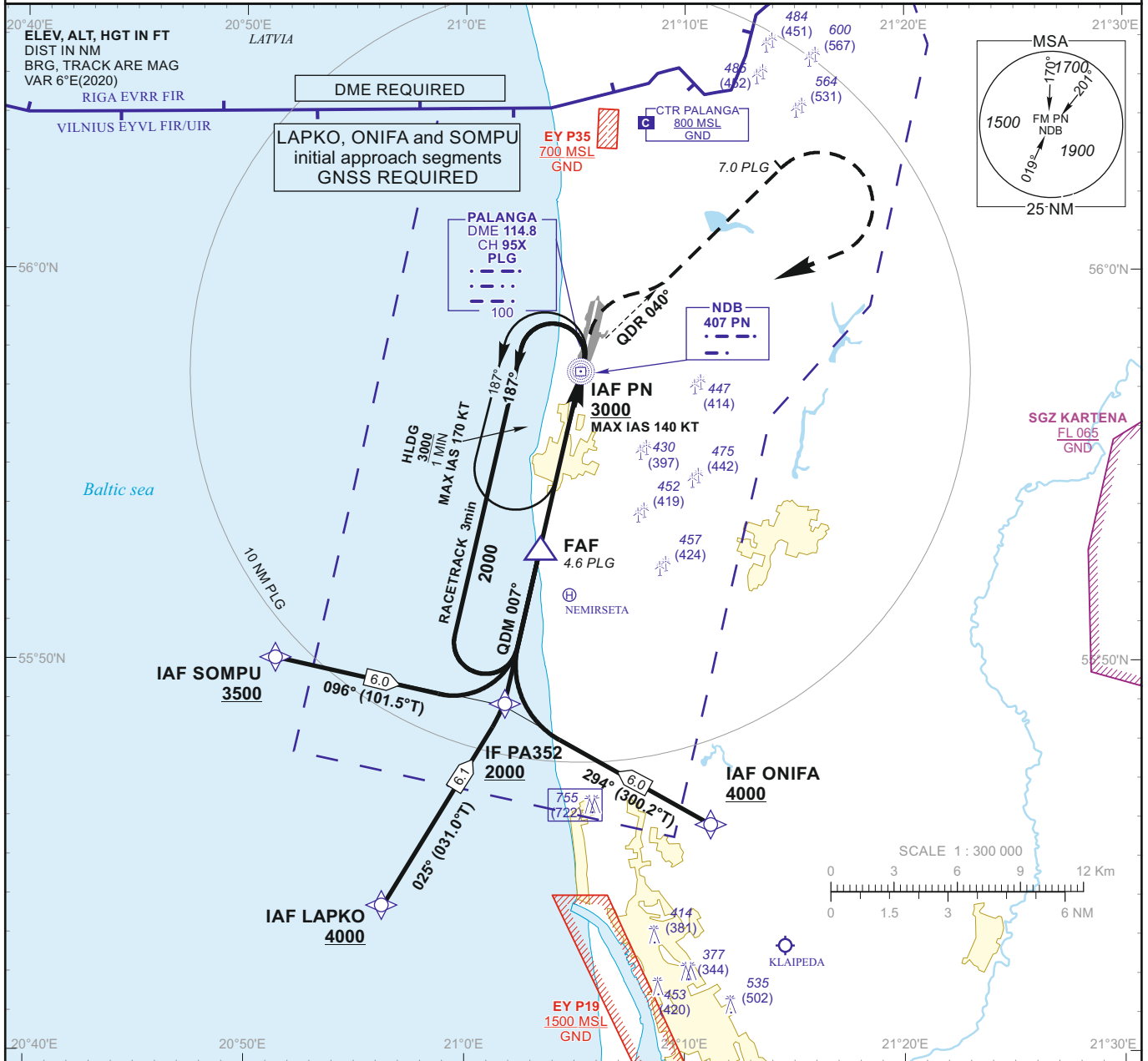


INSTRUMENT APPROACH CHART - ICAO

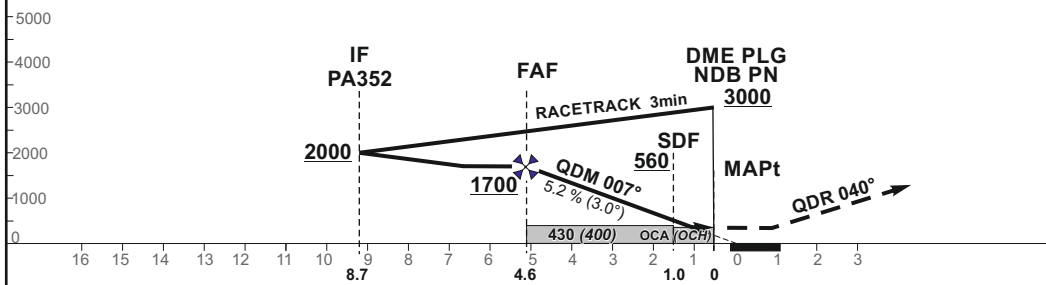
AERODROME ELEV 33
 HEIGHTS RELATED TO AD ELEV
 DTHR RWY 01 - ELEV 33

TWR 124.305
 118.305
 ATIS 127.805

PALANGA NDB Z RWY 01 (CAT A/B)



TRANSITION ALT 5000



MISSED APPROACH
 Climb on QDR 040° PN.
 AT 7.0 DME PLG turn right to PN climbing to 3000.
 Climb with 3.5% or more until crossing 7.0 DME PLG, due to airspace structure.

DTHR ELEV 33
 NM to/from DTHR RWY 01
 NM to/from DME PLG

OCA(OCH)		A	B	DIST DME PLG						
STRAIGHT-IN APPROACH	NDB	420 (390)		4	3	2	1			
	NDB (when SDF not received)	430 (400)		Altitude	1500	1190	870	560		
CIRCLING		490 (450)	740 (710)	Height	(1467)	(1157)	(837)	(527)		
	Timing not authorized for defining the MAPt									
GS				Kts	80	100	120	140	160	180
FAF - MAPt 4.6 NM				min:sec	3:00	2:44	2:00	1:43	1:30	1:20
Rate of descent (5.2%)				ft/min	415	520	625	730	835	940

For data tabulation see verso

Changes: MSA.

**INSTRUMENT
APPROACH
CHART - ICAO****AERODROME ELEV 33**
HEIGHTS RELATED TO AD ELEV
DTHR RWY 01 - ELEV 33**PALANGA**
NDB Z RWY 01
(CAT A/B)

TABULAR DESCRIPTION

IAF LAPKO, INITIAL APPROACH

Serial Number	Path Descriptor	Waypoint Identifier	Fly-over	Course/Track °M(°T)	Magnetic Variation	Distance (NM)/ Time	Turn Direction	Altitude (FT)/ Flight level	Speed (KT)	VPA/TCH	Navigation Specification
001	IF	LAPKO	—	—	5.9	—	—	+4000	—	—	RNAV 1
002	TF	PA352	—	025(031.0)	5.9	6.1	—	+2000	—	—	RNAV 1

IAF ONIFA, INITIAL APPROACH

Serial Number	Path Descriptor	Waypoint Identifier	Fly-over	Course/Track °M(°T)	Magnetic Variation	Distance (NM)/ Time	Turn Direction	Altitude (FT)/ Flight level	Speed (KT)	VPA/TCH	Navigation Specification
001	IF	ONIFA	—	—	5.9	—	—	+4000	—	—	RNAV 1
002	TF	PA352	—	294(300.2)	5.9	6.0	—	+2000	—	—	RNAV 1

IAF SOMPU, INITIAL APPROACH

Serial Number	Path Descriptor	Waypoint Identifier	Fly-over	Course/Track °M(°T)	Magnetic Variation	Distance (NM)/ Time	Turn Direction	Altitude (FT)/ Flight level	Speed (KT)	VPA/TCH	Navigation Specification
001	IF	SOMPU	—	—	5.9	—	—	+3500	—	—	RNAV 1
002	TF	PA352	—	096(101.5)	5.9	6.0	—	+2000	—	—	RNAV 1

NDB INSTRUMENT APPROACH from IAFs(PN, LAPKO, ONIFA, SOMPU)

FIX/POINTS	COORDINATES	FIX FORMATION
LAPKO (IAF)	55 43 39.9N 020 56 15.3E	BRG 014.38° PN ; 14.65 NM PLG
ONIFA (IAF)	55 45 51.4N 021 11 02.4E	BRG 338.24° PN ; 12.01 NM PLG
SOMPU (IAF)	55 50 04.5N 020 51 23.2E	BRG 040.98° PN ; 10.70 NM PLG
PA352 (IF)	55 48 53.5N 021 01 49.1E	BRG 006.85° PN ; 8.73 NM PLG
FAF	55 52 52.8N 021 03 24.9E	BRG 006.85° PN ; 4.63 NM PLG
SDF	55 56 24.9N 021 04 50.1E	BRG 006.85° PN ; 1.00 NM PLG
PN (MAPt, IAF)	55 57 23.1N 021 05 13.5E	
DTHR RWY 01	55 57 51.93N 021 05 25.11E	
DME PLG	55 57 23.5N 021 05 13.4E	
Final approach descent angle: 3.00°		