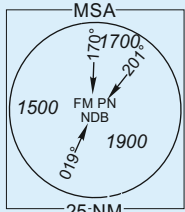
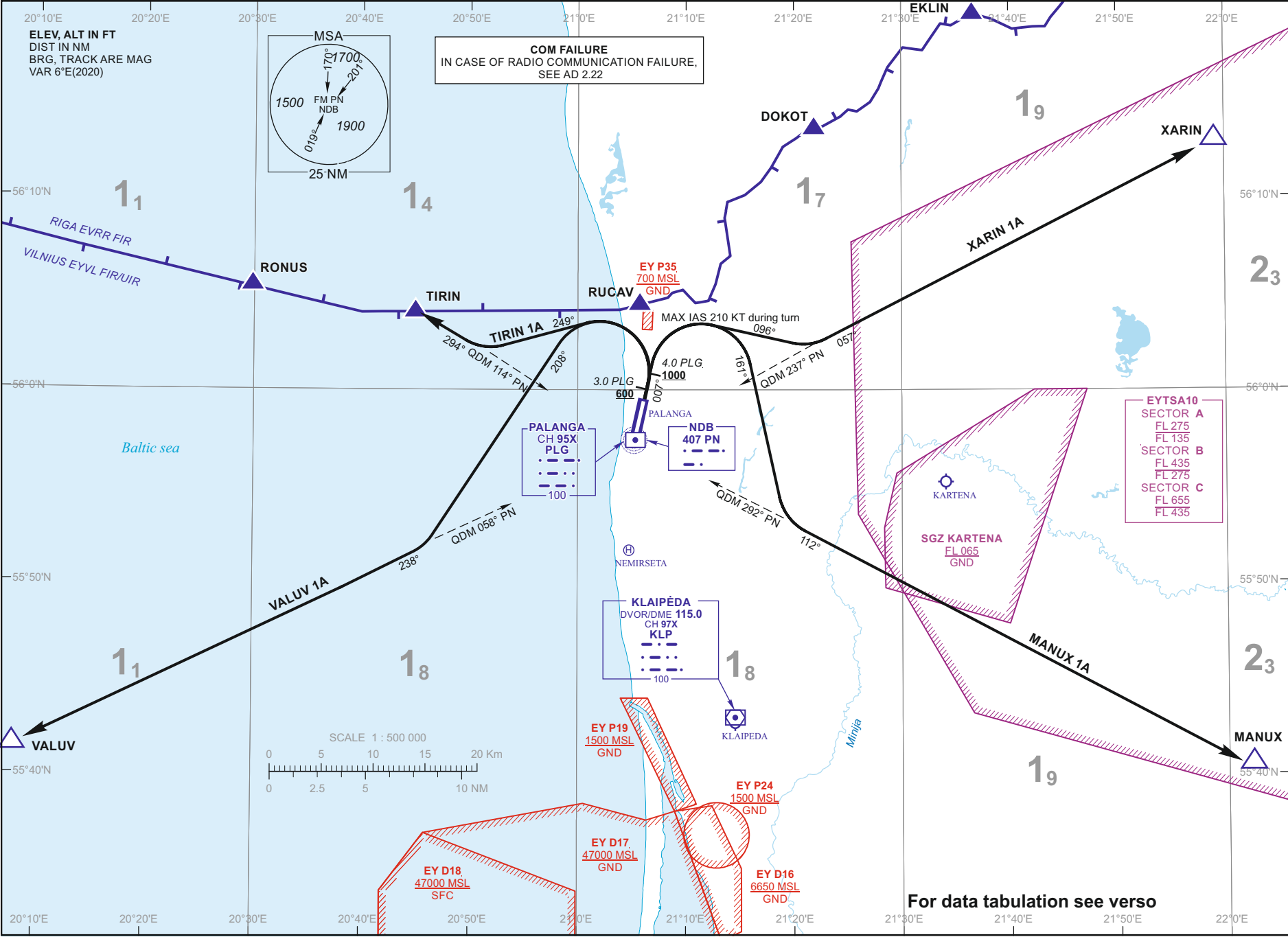


Changes: MSA; EYD17 and EYD18 vertical limit; COM FAILURE.

16 APR 2026

©2019 ORO NAVIGACIJA

AIRAC AMDT 02/26



**COM FAILURE**  
IN CASE OF RADIO COMMUNICATION FAILURE,  
SEE AD 2.22

**EY TSA10**  
SECTOR A  
FL 275  
FL 135  
SECTOR B  
FL 435  
FL 275  
SECTOR C  
FL 655  
FL 435

For data tabulation see verso

STANDARD DEPARTURE CHART  
INSTRUMENT (SID) - ICAO

TRANSITION ALT 5000

TWR	124.305
ATIS	127.805

**PALANGA**  
RMY 01  
MANUX 1A, TIRIN 1A,  
VALUV 1A, XARIN 1A

AIP LITHUANIA

EYPAAD 2.24-10-1

**PALANGA  
SID RWY 01**

## TABULAR DESCRIPTION

## STANDARD INSTRUMENT DEPARTURE (SID) ROUTES

SID NAME	ROUTE
<b>MANUX 1A</b>	Climb on RWY track to 4.0 DME PLG (at 1000 FT MSL or above). Turn right (MAX IAS 210 KT) to track 161°. Intercept QDM 292° PN, proceed to MANUX.
<b>TIRIN 1A</b>	Climb on RWY track to 3.0 DME PLG (at 600 FT MSL or above). Turn left (MAX IAS 210 KT) to track 249°. Intercept QDM 114° PN, proceed to TIRIN.
<b>VALUV 1A</b>	Climb on RWY track to 3.0 DME PLG (at 600 FT MSL or above). Turn left (MAX IAS 210 KT) to track 208°. Intercept QDM 058° PN, proceed to VALUV.
<b>XARIN 1A</b>	Climb on RWY track to 4.0 DME PLG (at 1000 FT MSL or above). Turn right (MAX IAS 210 KT) to track 096°. Intercept QDM 237° PN, proceed to XARIN.

Remark: 1. After take-off climb to 4000 FT MSL. Unless otherwise specified by ATC.  
2. PDG: 6.6%(400 FT/NM) up to 4000 FT MSL due to airspace.

WAYPOINT COORDINATES		
FIX/POINTS	COORDINATES	RADIAL/DISTANCE
<b>MANUX</b>	55 40 34.3N 022 02 08.2E	KLP R088.8/D27.0 ; PLG D36.3
<b>TIRIN</b>	56 04 02.2N 020 44 52.2E	KLP R315.9/D27.0 ; PLG D13.2
<b>VALUV</b>	55 41 31.7N 020 07 58.7E	KLP R262.4/D37.7 ; PLG D36.0
<b>XARIN</b>	56 12 56.9N 021 58 56.6E	KLP R033.4/D39.1 ; PLG D33.9
<b>KLP</b>	55 42 56.1N 021 14 37.4E	
<b>PN</b>	55 57 23.1N 021 05 13.5E	
<b>PLG</b>	55 57 23.5N 021 05 13.4E	

FOR DETAILED FLIGHT PROCEDURES REFER TO AIP EYPA AD 2.22