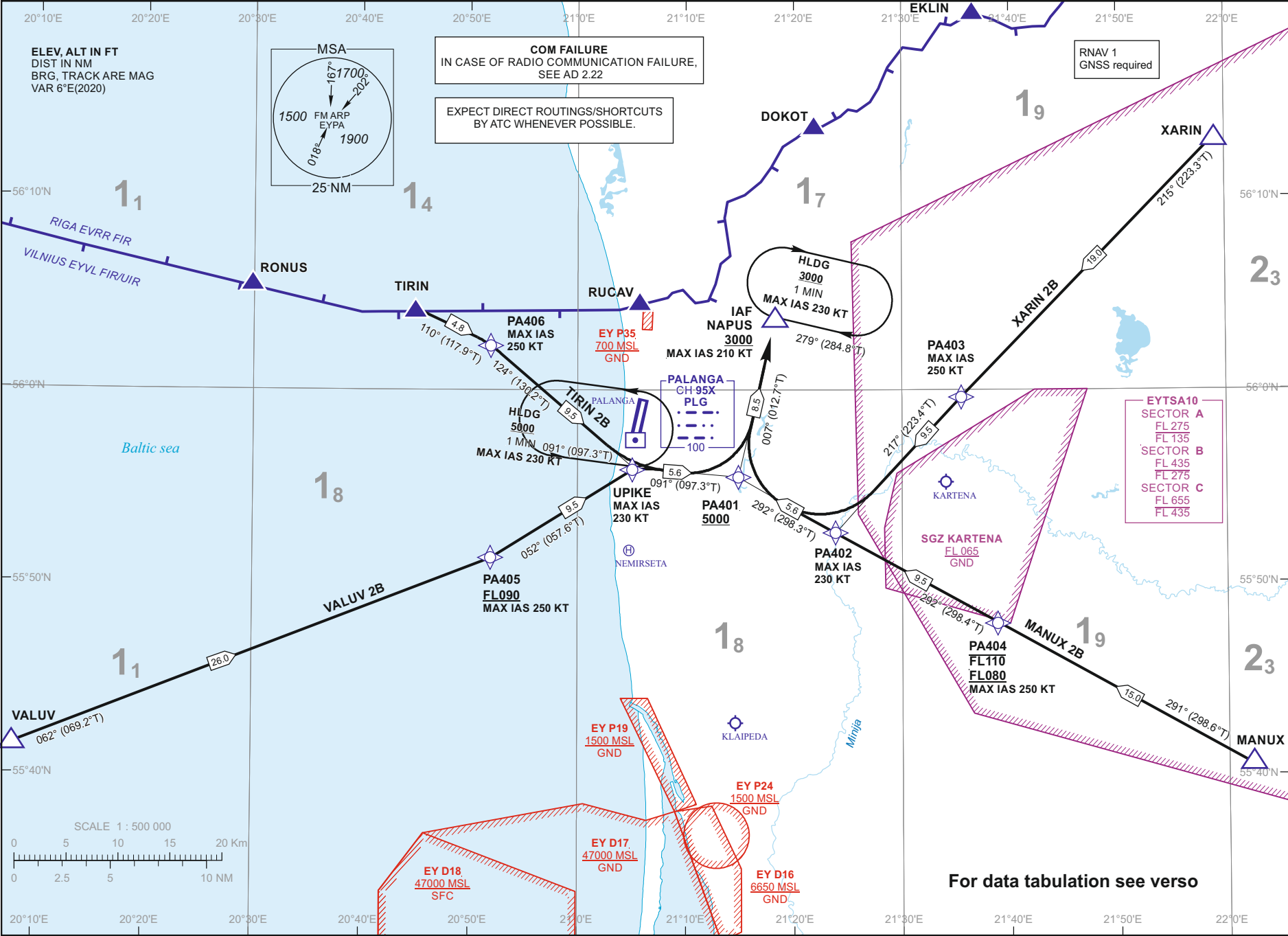


Changes: MSA; EYD17 and EYD18 vertical limit; COM FAILURE.

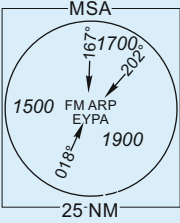
16 APR 2026

©2019 ORO NAVIGACIJA

AIRAC AMDT 02/26



ELEV. ALT IN FT
DIST IN NM
BRG, TRACK ARE MAG
VAR 6°E(2020)



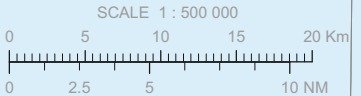
COM FAILURE
IN CASE OF RADIO COMMUNICATION FAILURE,
SEE AD 2.22

EXPECT DIRECT ROUTINGS/SHORTCUTS
BY ATC WHENEVER POSSIBLE.

RNAV 1
GNSS required

EY TSA10

SECTOR A	FL 275
	FL 135
SECTOR B	FL 435
	FL 275
SECTOR C	FL 655
	FL 435



For data tabulation see verso

STANDARD ARRIVAL CHART
INSTRUMENT (STAR) - ICAO

TRANSITION ALT
5000

ATIS
TWR
127.805
124.305
118.305

PALANGA (EYPA)
RNAV RMY 19
MANUX 2B, TIRIN 2B,
VALUV 2B, XARIN 2B

AIP LITHUANIA

EYPAAD 2.24-15-1

STANDARD ARRIVAL CHART
INSTRUMENT (STAR) - ICAOTRANSITION ALT
5000PALANGA (EYPA)
RNAV RWY 19
MANUX 2B, TIRIN 2B,
VALUV 2B, XARIN 2B

TABULAR DESCRIPTION

MANUX 2B

Serial Number	Path Descriptor	Waypoint Identifier	Fly-over	Course/Track °M(°T)	Magnetic Variation	Distance (NM)/ Time	Turn Direction	Altitude (FT)/ Flight level	Speed (KT)	Navigation Specification
001	IF	MANUX	—	—	7.9	—	—	—	—	RNAV1
002	TF	PA404	—	291(298.6)	7.9	15.0	—	-FL110/+FL080	-250	RNAV1
003	TF	PA402	—	292(298.4)	5.9	9.5	—	—	-230	RNAV1
004	TF	PA401	—	292(298.3)	5.9	5.6	—	+5000	—	RNAV1
005	TF	NAPUS	—	007(012.7)	5.9	8.5	—	+3000	-210	RNAV1

TIRIN 2B

Serial Number	Path Descriptor	Waypoint Identifier	Fly-over	Course/Track °M(°T)	Magnetic Variation	Distance (NM)/ Time	Turn Direction	Altitude (FT)/ Flight level	Speed (KT)	Navigation Specification
001	IF	TIRIN	—	—	7.6	—	—	—	—	RNAV1
002	TF	PA406	—	110(117.9)	7.6	4.8	—	—	-250	RNAV1
003	TF	UPIKE	—	124(130.2)	5.9	9.5	—	—	-230	RNAV1
004	TF	PA401	—	091(097.3)	5.9	5.6	—	+5000	—	RNAV1
005	TF	NAPUS	—	007(012.7)	5.9	8.5	—	+3000	-210	RNAV1

VALUV 2B

Serial Number	Path Descriptor	Waypoint Identifier	Fly-over	Course/Track °M(°T)	Magnetic Variation	Distance (NM)/ Time	Turn Direction	Altitude (FT)/ Flight level	Speed (KT)	Navigation Specification
001	IF	VALUV	—	—	7.3	—	—	—	—	RNAV1
002	TF	PA405	—	062(069.2)	7.3	26.0	—	+FL090	-250	RNAV1
003	TF	UPIKE	—	052(057.6)	5.9	9.5	—	—	-230	RNAV1
004	TF	PA401	—	091(097.3)	5.9	5.6	—	+5000	—	RNAV1
005	TF	NAPUS	—	007(012.7)	5.9	8.5	—	+3000	-210	RNAV1

XARIN 2B

Serial Number	Path Descriptor	Waypoint Identifier	Fly-over	Course/Track °M(°T)	Magnetic Variation	Distance (NM)/ Time	Turn Direction	Altitude (FT)/ Flight level	Speed (KT)	Navigation Specification
001	IF	XARIN	—	—	8.0	—	—	—	—	RNAV1
002	TF	PA403	—	215(223.3)	8.0	19.0	—	—	-250	RNAV1
003	TF	PA402	—	217(223.4)	5.9	9.5	—	—	-230	RNAV1
004	TF	PA401	—	292(298.3)	5.9	5.6	—	+5000	—	RNAV1
005	TF	NAPUS	—	007(012.7)	5.9	8.5	—	+3000	-210	RNAV1

HOLDINGS IDENTIFICATION

Holding fix	Geographical coordinates	Inbound track °M(°T)	Magnetic Variation	Outbound distance (NM)/ Time	Turn Direction	Minimum/Maximum holding altitude (FT)/Flight level	Speed (KT)
NAPUS	56 03 12.1N 021 18 32.7E	279(284.8)	5.9	1 min	R	+3000	-230
UPIKE	55 55 40.5N 021 05 23.3E	091(097.3)	5.9	1 min	L	+5000	-230

FOR DETAILED FLIGHT PROCEDURES REFER TO AIP EYPA AD 2.22

**STANDARD ARRIVAL CHART
INSTRUMENT (STAR) - ICAO**

TRANSITION ALT 5000

**PALANGA (EYPA)
RNAV RWY 19**
MANUX 2B, TIRIN 2B,
VALUV 2B, XARIN 2B

TABULAR DESCRIPTION

WAYPOINT COORDINATES					
FIX/POINTS	COORDINATES	FIX/POINTS	COORDINATES	FIX/POINTS	COORDINATES
PA401	55 54 58.5N 021 15 14.2E	PA406	56 01 48.3N 020 52 24.1E	VALUV	55 41 31.7N 020 07 58.7E
PA402	55 52 18.9N 021 24 00.0E	MANUX	55 40 34.3N 022 02 08.2E	XARIN	56 12 56.9N 021 58 56.6E
PA403	55 59 09.2N 021 35 34.0E	NAPUS	56 03 12.1N 021 18 32.7E	PLG	55 57 23.5N 021 05 13.4E
PA404	55 47 46.2N 021 38 52.4E	TIRIN	56 04 02.2N 020 44 52.2E		
PA405	55 50 36.6N 020 51 07.8E	UPIKE	55 55 40.5N 021 05 23.3E		

Changes:

SPECIALUSIS TUŠČIAS PUSLAPIS

THIS PAGE INTENTIONALLY LEFT BLANK