

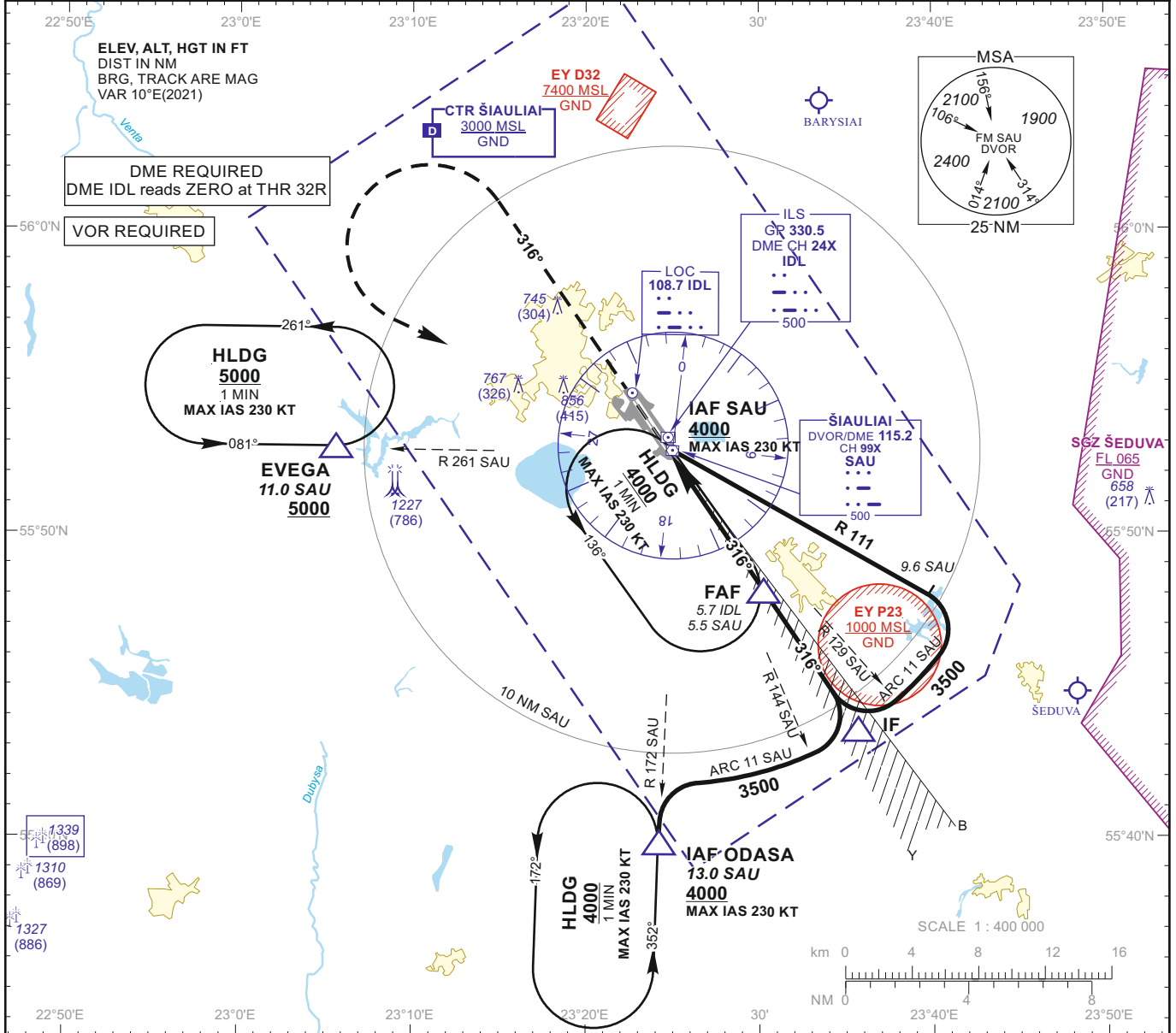
INSTRUMENT APPROACH CHART
for MILITARY ACFT
 TRANSITION LEVEL By ATC
 TRANSITION ALT **5000(4559)**

AERODROME ELEV 447
 HEIGHTS RELATED TO
 THR RWY 32R - ELEV 441

TWR 120.405
 ATIS 120.755

ŠIAULIAI (EYSA)
ILS Z or LOC Z
RWY 32R (MIL)

DVOR/DME SAU CH99X	APP COURSE 316°	FAF ALT 2300	Descent GP 3.00° (5.2%)	DA ref. to minimums MDA 760	TDZE 441	ALS (BF)	LDA 11483
-----------------------	--------------------	-----------------	----------------------------	---------------------------------------	--------------------	--------------------	---------------------



MISSED APPROACH

Climb on track 316° to 2000, then turn left with MIN bank angle 20° (MAX IAS 230 KT) to SAU climbing to 4000.

Remarks:
 LOC : timing not authorized for defining the MAPt.

ILS RDH 51

DVOR/DME SAU

DME IDL 4000 (3059)

MAPt (LOC)

FAF (LOC) 2300 (1859)

R 111

GP 3.00° (5.2%)

316°

TDZE 441

316°

NM to/from THR RWY 32R		3	2	1	0	0.5	1	2	3	4	5	6	7	8	9	10	11	12	13	14	15	16
NM to/from DME SAU																						
NM to/from DME IDL																						
GS	Kts	80	100	120	140	160	180	DIST IDL	5	4	3	2	1									
FAF - MAPt	5.0 NM	min:sec	3:45	3:00	2:30	2:09	1:53	1:40	Altitude	2070	1750	1440	1120	810								
Rate of descent (5.2%)	ft/min	415	520	625	730	835	940	Height	(1629)	(1309)	(999)	(679)	(369)									

	STRAIGHT-IN APPROACH						CIRCLING APPROACH		
	ILS CAT I			LOC			MDA(H)	Visibility	
	DA(H)	Full	ALS out	MDA(H)	Full	ALS out			
A	641 (200)	RVR 550m	RVR 1200m	760 (320)	RVR 750m	RVR 1400m	880 (440)	1500m	A
B							1160 (710)	2400m	B
C							1260 (810)	3600m	C
D							1350 (910)	4300m	D
E	652 (211)								E

Changes:

INSTRUMENT APPROACH CHART
for MILITARY ACFT
TRANSITION LEVEL By ATC
TRANSITION ALT **5000(4559)**

AERODROME ELEV 447
HEIGHTS RELATED TO
THR RWY 32R - ELEV 441

TWR 120.405
ATIS 120.755

ŠIAULIAI (EYSA)
ILS Z or LOC Z
RWY 32R (MIL)

TABULAR DESCRIPTION

ILS or LOC INSTRUMENT APPROACH for MILITARY ACFT from IAFs (SAU, ODASA)		
FIX/POINTS	COORDINATES	FIX FORMATION
EVEGA (HLDG)	55 52.87N 023 05.45E	BRG 080.98° / 11.00 NM SAU
ODASA (IAF)	56 07.72N 023 24.76E	BRG 352.21° / 13.00 NM SAU
SAU (IAF)	55 52.74N 023 24.98E	
IF	55 43.56N 023 35.68E	BRG 316.25° / 11.20 NM IDL ; 11.00 NM SAU
FAF	55 48.10N 023 30.30E	BRG 316.25° / 5.73 NM IDL ; 5.53 NM SAU
FAP	55 48.21N 023 30.16E	BRG 316.25° / 5.59 NM IDL ; 5.40 NM SAU
MAPt	55 52.27N 023 25.33E	BRG 316.25° / 0.70 NM IDL ; 0.51 NM SAU
THR RWY 32R	55 52.85N 023 24.64E	
DME IDL	55 53.02N 023 24.58E	
LOC IDL	55 54.58N 023 22.57E	
Final approach (LOC) descent angle: 3.00°		