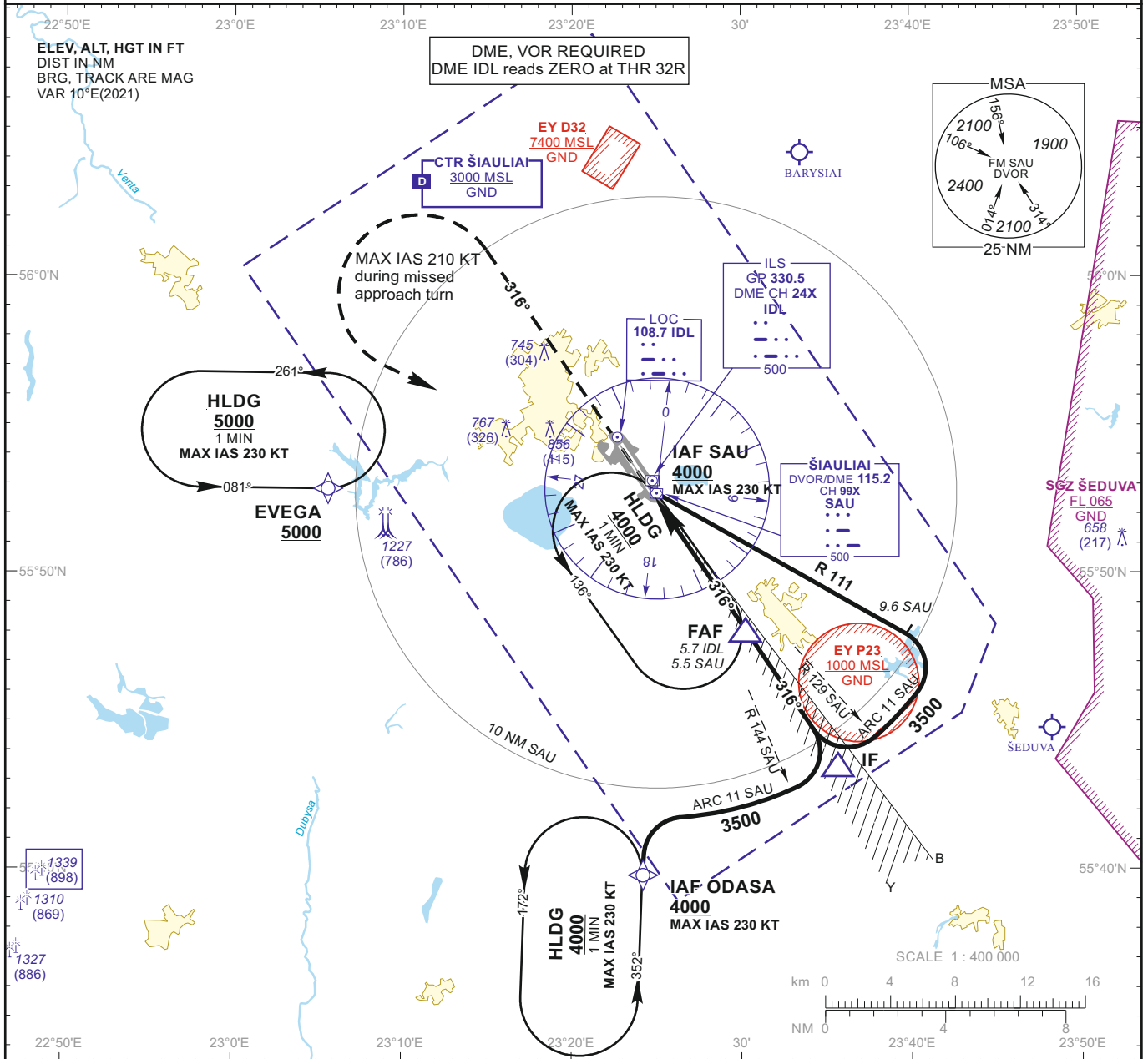


**INSTRUMENT APPROACH CHART - ICAO**

**AERODROME ELEV 447**  
HEIGHTS RELATED TO THR RWY 32R - ELEV 441

TWR 120.405  
ATIS 120.755

**ŠIAULIAI (EYSA) ILS or LOC RWY 32R (CAT A/B/C/D)**



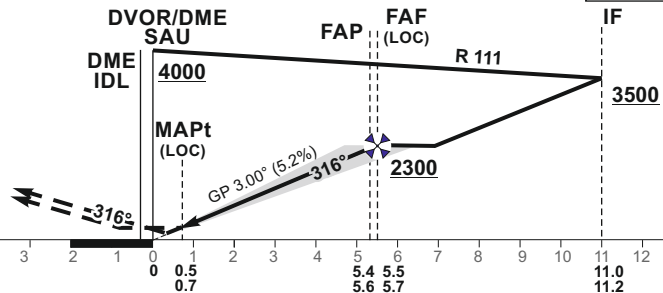
**MISSED APPROACH**

Climb on track 316° to 2000, then turn left (MAX IAS 210 KT) to SAU climbing to 4000.

ILS RDH 51

THR ELEV 441

TRANSITION ALT 5000



OCA(OCH)	STRAIGHT-IN APPROACH	A	B	C	D	DIST DME IDL	5	4	3	2	1			
		603 (162)	615 (174)	623 (182)	634 (193)		Altitude	2070	1750	1440	1120	810		
	LOC	760 (320)												
	CIRCLING	880 (440)	1160 (710)	1260 (810)										
							LOC : timing not authorized for defining the MAPt							
							GS	Kts	80	100	120	140	160	180
							FAF - MAPt 5.0 NM	min:sec	3:45	3:00	2:30	2:09	1:53	1:40
							Rate of descent (5.2%)	ft/min	415	520	625	730	835	940
For data tabulation see verso														

Changes:

INSTRUMENT  
APPROACH  
CHART - ICAO

**AERODROME ELEV 447**  
HEIGHTS RELATED TO  
THR RWY 32R - ELEV 441

TWR 120.405  
ATIS 120.755

**ŠIAULIAI (EYSA)**  
**ILS or LOC RWY 32R**  
**(CAT A/B/C/D)**

TABULAR DESCRIPTION

ILS or LOC INSTRUMENT APPROACH from IAFs (SAU, ODASA)		
FIX/POINTS	COORDINATES	FIX FORMATION
EVEGA (HLDG)	55 52 52.4N 023 05 27.0E	BRG 080.98° / 11.00 NM SAU
ODASA (IAF)	55 39 46.4N 023 24 09.9E	BRG 352.21° / 13.00 NM SAU
SAU (IAF)	55 52 44.6N 023 24 59.0E	
IF	55 43 33.7N 023 35 40.9E	BRG 316.25° / 11.20 NM IDL ; 11.00 NM SAU
FAF	55 48 06.0N 023 30 17.9E	BRG 316.25° / 5.73 NM IDL ; 5.53 NM SAU
FAP	55 48 12.8N 023 30 09.8E	BRG 316.25° / 5.59 NM IDL ; 5.40 NM SAU
MAPt	55 52 16.1N 023 25 19.7E	BRG 316.25° / 0.70 NM IDL ; 0.51 NM SAU
THR RWY 32R	55 52 50.94N 023 24 38.15E	
DME IDL	55 53 01.1N 023 24 34.7E	
LOC IDL	55 54 34.51N 023 22 34.26E	
Final approach (LOC) descent angle: 3.00°		