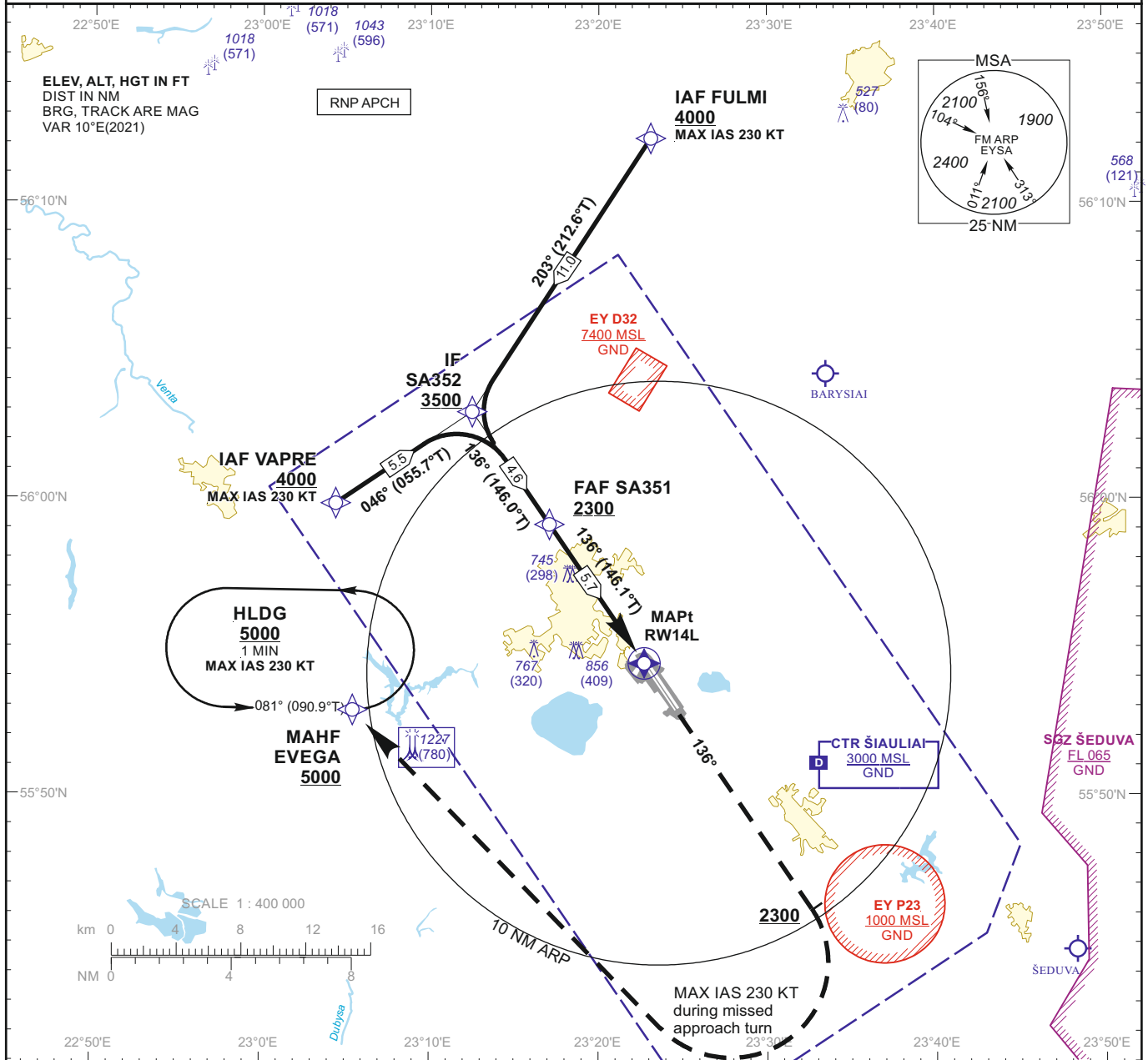


**INSTRUMENT APPROACH CHART - ICAO**

**AERODROME ELEV 447**  
HEIGHTS RELATED TO THR RWY 14L - ELEV 447

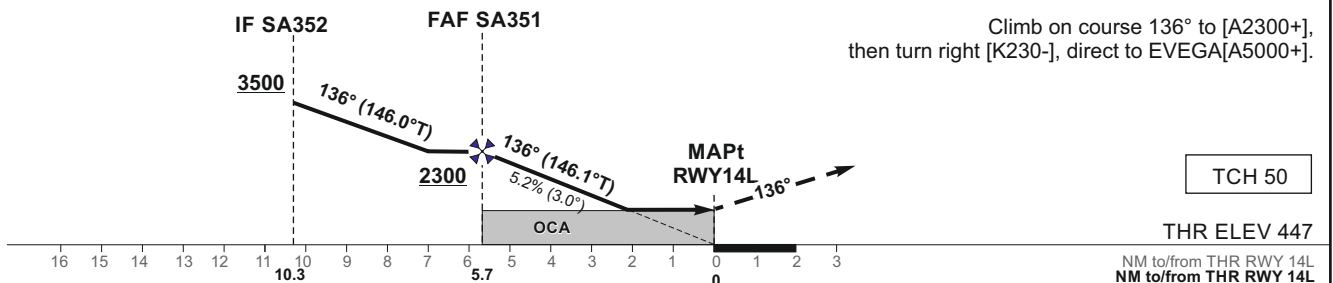
TWR 120.405  
ATIS 120.755

**ŠIAULIAI (EYSA)**  
**RNP (LNAV only) RWY 14L**  
**(CAT A/B/C/D)**



TRANSITION ALT 5000

**MISSED APPROACH**



OCA(OCH)	A	B	C	D	DIST THR RWY 14L	5	4	3	2			
STRAIGHT-IN APPROACH	990 (540)				Altitude	2080	1760	1450	1130			
CIRCLING	880 (440)	1160 (710)	1260 (810)		Timing not authorized for defining the MAPt							
					GS	Kts	80	100	120	140	160	180
					FAF - MAPt 5.7 NM	min:sec	4:16	3:25	2:51	2:26	2:08	1:54
					Rate of descent (5.2%)	ft/min	415	520	625	730	835	940

For data tabulation see verso

Changes:

**INSTRUMENT  
APPROACH  
CHART - ICAO**

**AERODROME ELEV 447**  
HEIGHTS RELATED TO  
THR RWY 14L - ELEV 447

TWR 120.405  
ATIS 120.755

**ŠIAULIAI (EYSA)**  
**RNP (LNAV only) RWY 14L**  
**(CAT A/B/C/D)**

**TABULAR DESCRIPTION**

**IAF FULMI**

Serial Number	Path Descriptor	Waypoint Identifier	Fly-over	Course/Track °M(°T)	Magnetic Variation	Distance (NM)/ Time	Turn Direction	Altitude (FT)/ Flight level	Speed (KT)	VPA/TCH	Navigation Specification
001	IF	FULMI	—	—	9.8	—	—	+4000	-230	—	RNP APCH
002	TF	SA352	—	203(212.6)	9.8	11.0	—	+3500	—	—	RNP APCH

**IAF VAPRE**

Serial Number	Path Descriptor	Waypoint Identifier	Fly-over	Course/Track °M(°T)	Magnetic Variation	Distance (NM)/ Time	Turn Direction	Altitude (FT)/ Flight level	Speed (KT)	VPA/TCH	Navigation Specification
001	IF	VAPRE	—	—	9.8	—	—	+4000	-230	—	RNP APCH
002	TF	SA352	—	046(055.7)	9.8	5.5	—	+3500	—	—	RNP APCH
001	IF	SA352	—	—	9.8	—	—	+3500	—	—	RNP APCH
002	TF	SA351	—	136(146.0)	9.8	4.6	—	+2300	—	—	RNP APCH
003	TF	RW14L	Y	136(146.1)	9.8	5.7	—	990	—	-3.00/50	RNP APCH
004	CA	—	—	136(146.2)	9.8	—	—	+2300	-230	—	RNP APCH
005	DF	EVEGA	—	—	9.8	—	R	+5000	—	—	RNP APCH
006	HM	EVEGA	—	081(090.9)	9.8	1 min	L	+5000	—	—	RNAV 1

**WAYPOINT COORDINATES**

FIX/POINTS	COORDINATES
EVEGA (MAHF)	55 52 52.4N 023 05 27.0E
FULMI (IAF)	56 12 11.0N 023 23 06.0E
VAPRE (IAF)	55 59 51.2N 023 04 24.3E
SA352 (IF)	56 02 56.9N 023 12 30.0E
SA351 (FAF)	55 59 08.5N 023 17 05.4E
RW14L (MAPt)	55 54 24.9N 023 22 45.8E