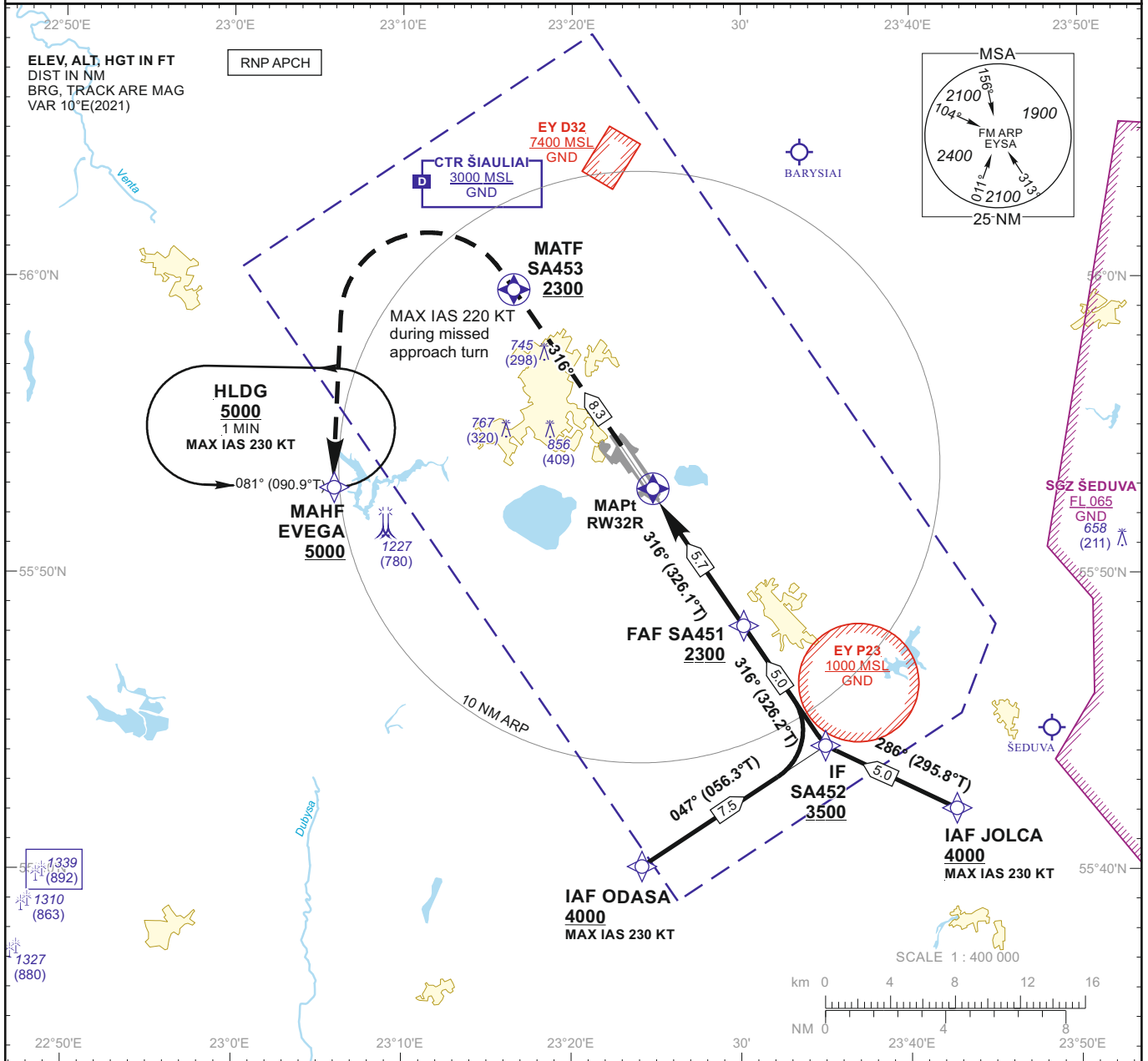


**INSTRUMENT  
APPROACH  
CHART - ICAO**

**AERODROME ELEV 447**  
HEIGHTS RELATED TO AD ELEV  
THR RWY 32R - ELEV 441

TWR 120.405  
ATIS 120.755

**ŠIAULIAI (EYSA)  
RNP (LNAV only) RWY 32R  
(CAT A/B/C/D)**



**MISSED APPROACH**

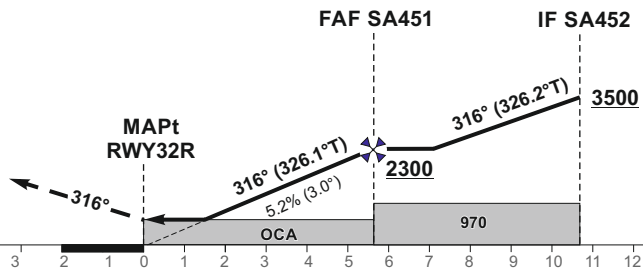
Climb on course 316° to SA453[A2300+],  
then turn left [K220-], direct to EVEGA[A5000+].

TRANSITION ALT 5000

TCH 50

THR ELEV 441

NM to/from THR RWY 32R  
NM to/from THR RWY 32R



OCA(OCH)	A	B	C	D	DIST THR RWY 32R	5	4	3	2	1
STRAIGHT-IN APPROACH	LNAV 800 (350)				Altitude	2080	1760	1450	1130	820
CIRCLING	880 (440)	1160 (710)	1260 (810)		Timing not authorized for defining the MAPt					
	GS		Kts		80	100	120	140	160	180
	FAF - MAPt 5.7 NM		min:sec		4:16	3:25	2:51	2:26	2:08	1:54
	Rate of descent (5.2%)		ft/min		415	520	625	730	835	940

For data tabulation see verso

Changes:

**INSTRUMENT  
APPROACH  
CHART - ICAO**

**AERODROME ELEV 447**  
HEIGHTS RELATED TO AD ELEV  
THR RWY 32R - ELEV 441

TWR 120.405  
ATIS 120.755

**ŠIAULIAI (EYSA)**  
**RNP (LNAV only) RWY 32R**  
**(CAT A/B/C/D)**

**TABULAR DESCRIPTION**

**IAF ODASA**

Serial Number	Path Descriptor	Waypoint Identifier	Fly-over	Course/Track °M(°T)	Magnetic Variation	Distance (NM)/ Time	Turn Direction	Altitude (FT)/ Flight level	Speed (KT)	VPA/TCH	Navigation Specification
001	IF	ODASA	—	—	9.8	—	—	+4000	-230	—	RNP APCH
002	TF	SA452	—	047(056.3)	9.8	7.5	—	+3500	—	—	RNP APCH

**IAF JOLCA**

Serial Number	Path Descriptor	Waypoint Identifier	Fly-over	Course/Track °M(°T)	Magnetic Variation	Distance (NM)/ Time	Turn Direction	Altitude (FT)/ Flight level	Speed (KT)	VPA/TCH	Navigation Specification
001	IF	JOLCA	—	—	9.8	—	—	+4000	-230	—	RNP APCH
002	TF	SA452	—	286(295.8)	9.8	5.0	—	+3500	—	—	RNP APCH
001	IF	SA452	—	—	9.8	—	—	+3500	—	—	RNP APCH
002	TF	SA451	—	316(326.2)	9.8	5.0	—	+2300	—	—	RNP APCH
003	TF	RW32R	Y	316(326.1)	9.8	5.7	—	810	—	-3.00/50	RNP APCH
004	CF	SA453	Y	316(326.0)	9.8	8.3	—	+2300	-220	—	RNP APCH
005	DF	EVEGA	—	—	9.8	—	L	+5000	—	—	RNP APCH
006	HM	EVEGA	—	081(090.9)	9.8	1 min	L	+5000	—	—	RNAV 1

**WAYPOINT COORDINATES**

FIX/POINTS	COORDINATES
EVEGA (MAHF)	55 52 52.4N 023 05 27.0E
ODASA (IAF)	55 39 46.4N 023 24 09.9E
JOLCA (IAF)	55 41 46.8N 023 43 09.0E
SA452 (IF)	55 43 57.0N 023 35 13.3E
SA451 (FAF)	55 48 06.0N 023 30 17.9E
RW32R (MAPt)	55 52 50.9N 023 24 38.2E
SA453 (MATF)	55 59 44.3N 023 16 22.3E

Changes: