

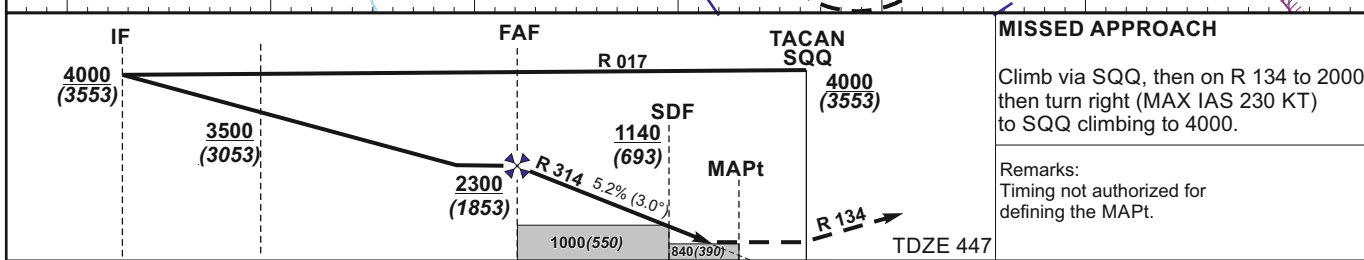
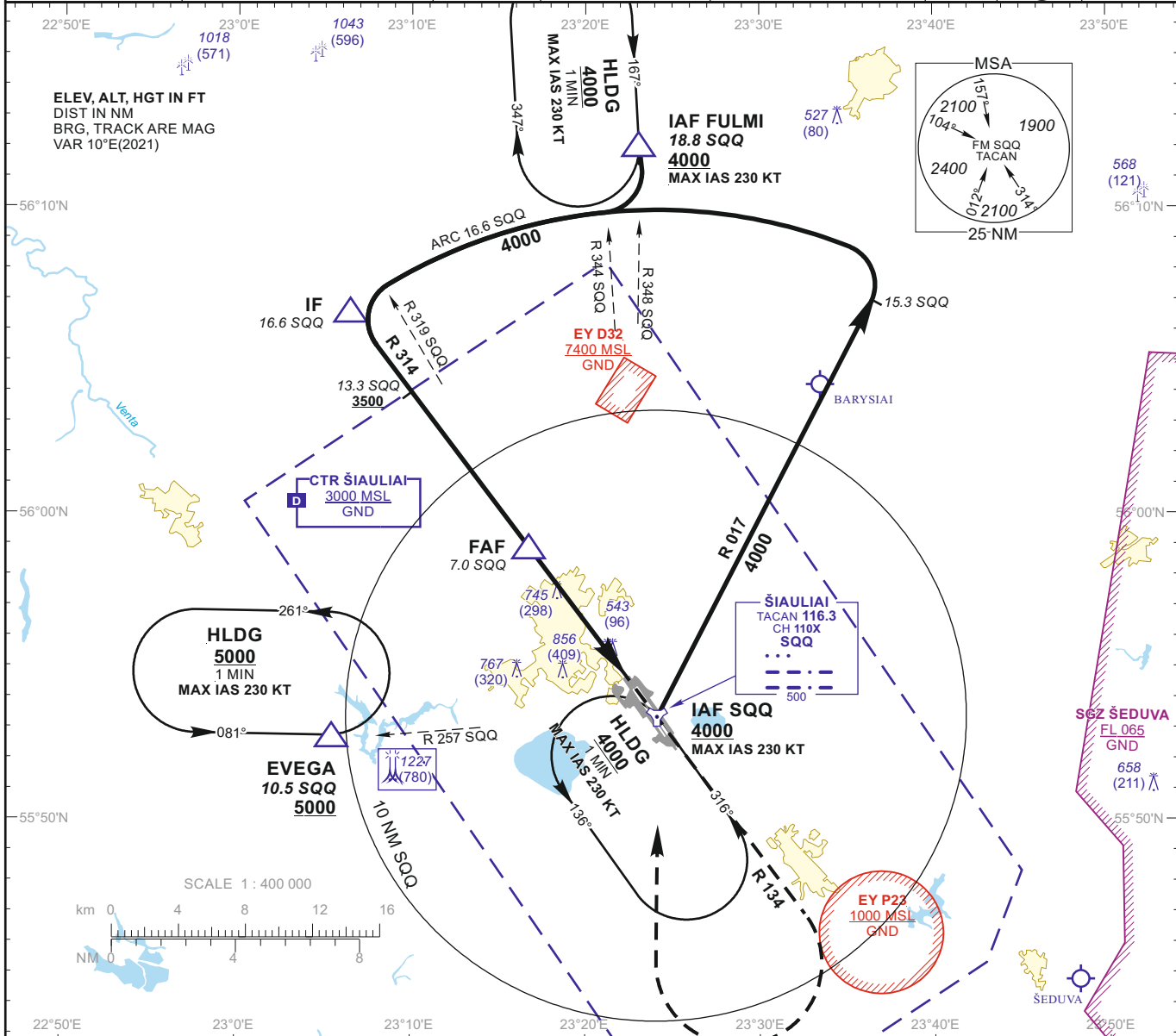
**INSTRUMENT APPROACH CHART**  
**for MILITARY ACFT**  
 TRANSITION LEVEL By ATC  
 TRANSITION ALT **5000(4553)**

**AERODROME ELEV 447**  
 HEIGHTS RELATED TO AD ELEV  
 THR RWY 14L - ELEV 447

TWR 120.405  
 ATIS 120.755

**ŠIAULIAI (EYSA)**  
**TACAN**  
**RWY 14L (MIL)**

TACAN SQQ CH110X	APP COURSE 134°	FAF ALT 2300	Descent GP 5.2% (3.00°)	MDA 840	TDZE 447	ALS (BP)	LDA 11483
---------------------	--------------------	-----------------	----------------------------	---------	-------------	-------------	--------------



GS	Kts	80	100	120	140	160	180	DIST SQQ	6	5	4	3
FAF - MAPt 5.3 NM	min:sec	3:59	3:11	2:39	2:16	1:59	1:46	Altitude	2000	1680	1370	1050
Rate of descent (5.2%)	ft/min	415	520	625	730	835	940	Height	(1553)	(1233)	(923)	(603)

	STRAIGHT-IN APPROACH						CIRCLING APPROACH		
	TACAN			TACAN (When SDF not received)			MDA(H)	Visibility	
	MDA(H)	Full	ALS out	MDA(H)	Full	ALS out			
A	840 (390)	RVR 1100m	RVR 1500m	1000 (550)	RVR 2000m	RVR 2700m	880 (440)	1500m	A
B							1160 (710)	2400m	B
C							1260 (810)	3600m	C
D							1260 (810)	3600m	D
E							1350 (910)	4300m	E

Changes:

**INSTRUMENT APPROACH CHART**  
for **MILITARY ACFT**  
TRANSITION LEVEL By ATC  
TRANSITION ALT **5000(4553)**

**AERODROME ELEV 447**  
HEIGHTS RELATED TO AD ELEV  
THR RWY 14L - ELEV 447

TWR 120.405
ATIS 120.755

**ŠIAULIAI (EYSA)**  
**TACAN**  
**RWY 14L (MIL)**

**TABULAR DESCRIPTION**

TACAN INSTRUMENT APPROACH for MILITARY ACFT from IAFs (SQQ, FULMI)		
FIX/POINTS	COORDINATES	FIX FORMATION
EVEGA (HLDG)	55 52.87N 023 05.45E	BRG 077.28° / 10.54 NM SQQ
FULMI (IAF)	56 12.18N 023 23.10E	BRG 168.39° / 18.80 NM SQQ
SQQ TACAN (IAF)	55 53.43N 023 24.14E	
IF	56 06.73N 023 06.49E	BRG 133.66° / 16.61 NM SQQ
FAF	55 59.01N 023 16.76E	BRG 133.66° / 6.97 NM SQQ
SDF	55 56.07N 023 20.66E	BRG 133.66° / 3.3 NM SQQ
MAPt	55 54.74N 023 22.42E	BRG 133.66° / 1.63 NM SQQ
THR RWY 14L	55 54.41N 023 22.76E	
Final approach descent angle: 3.00°		