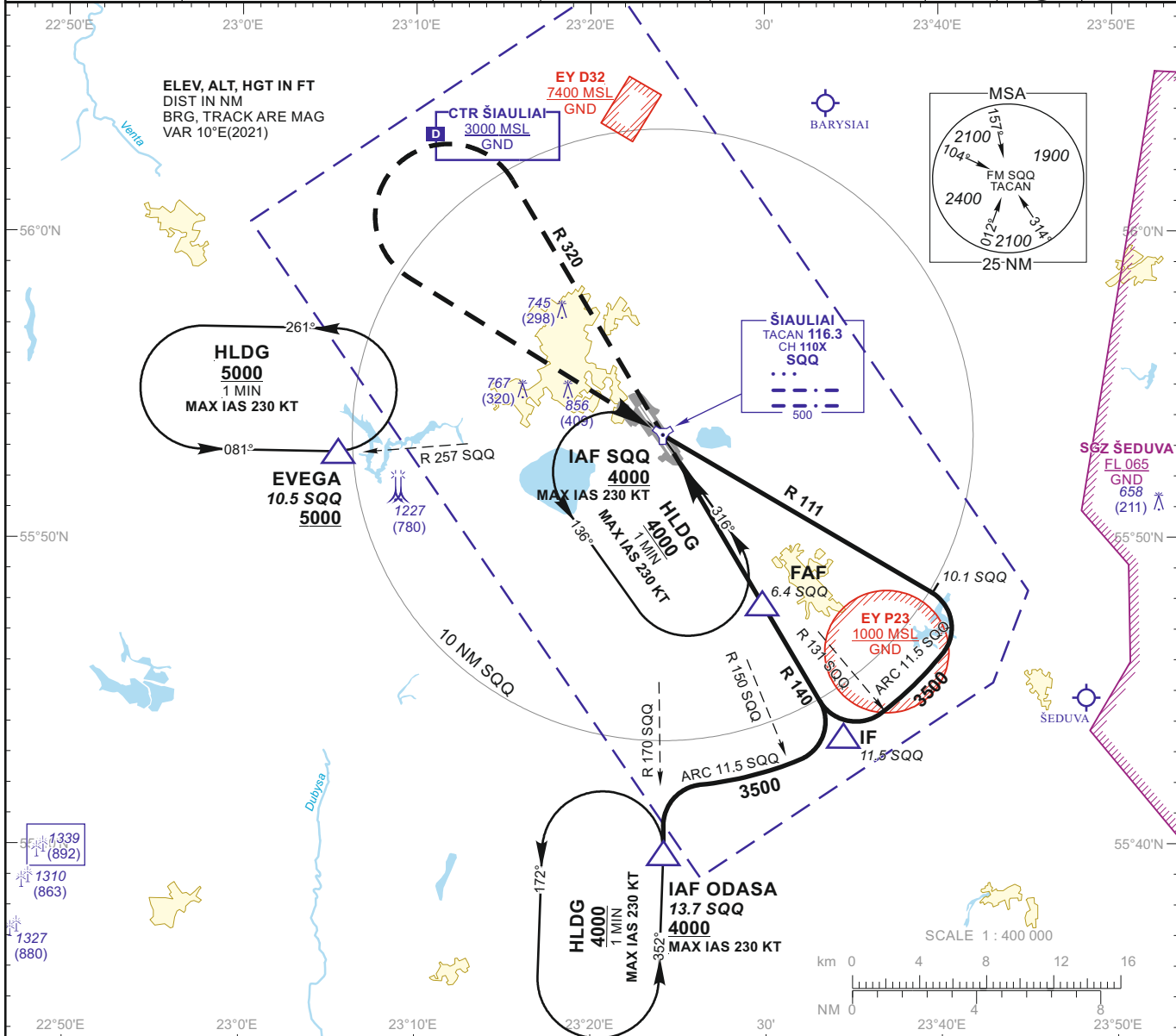


INSTRUMENT APPROACH CHART **AERODROME ELEV 447** **ŠIAULIAI (EYSA)**
 for MILITARY ACFT **HEIGHTS RELATED TO AD ELEV** **TACAN**
 TRANSITION LEVEL By ATC **THR RWY 32R - ELEV 441** **TWR 120.405**
 TRANSITION ALT **5000(4553)** **ATIS 120.755** **RWY 32R (MIL)**

TACAN SQQ CH110X	APP COURSE 320°	FAF ALT 2300	Descent GP 5.2% (3.00°)	MDA 800	TDZE 441	ALS (BP)	LDA 11483
---------------------	--------------------	-----------------	----------------------------	---------	-------------	-------------	--------------



MISSED APPROACH
 Climb via SQQ, then on R 320 to 2100, then turn left with MIN bank angle 20° (MAX IAS 230 KT) to SQQ climbing to 4000.
 Remarks: Timing not authorized for defining the MAPt.

TACAN SQQ 4000 (3053) → **R 111** → **FAF** 2300 (1853) → **IF** 3500 (3053).
 Descent: 5.2% (3.00°) on R 140.
MAPt at 1.6 NM from IAF SQQ.
TDZE 441.

NM to/from THR RWY 32R
 NM to/from TACAN SQQ

	3	2	1	0.6	1.6	2	3	4	5	6.4	7	8	9	10	11.5	12	13	14	15	16
--	---	---	---	-----	-----	---	---	---	---	-----	---	---	---	----	------	----	----	----	----	----

GS	Kts	80	100	120	140	160	180	DIST SQQ	6	5	4	3	2
FAF - MAPt 4.8 NM	min:sec	3:36	2:53	2:24	2:03	1:48	1:36	Altitude	2190	1870	1560	1240	920
Rate of descent (5.2%)	ft/min	415	520	625	730	835	940	Height	(1743)	(1423)	(1113)	(793)	(473)

	STRAIGHT-IN APPROACH			CIRCLING APPROACH		
	TACAN		ALS out	MDA(H)	Visibility	
	MDA(H)	Full				
A	800 (350)	RVR 900m		880 (440)	1500m	A
B				1160 (710)	2400m	B
C				1260 (810)	3600m	C
D				1350 (910)	4300m	D
E						

Changes:

INSTRUMENT APPROACH CHART
for MILITARY ACFT
TRANSITION LEVEL By ATC
TRANSITION ALT **5000(4553)**

AERODROME ELEV 447
HEIGHTS RELATED TO AD ELEV
THR RWY 32R - ELEV 441

TWR 120.405
ATIS 120.755

ŠIAULIAI (EYSA)
TACAN
RWY 32R (MIL)

TABULAR DESCRIPTION

TACAN INSTRUMENT APPROACH for MILITARY ACFT from IAFs (SQQ, ODASA)		
FIX/POINTS	COORDINATES	FIX FORMATION
EVEGA (HLDG)	55 52.87N 023 05.45E	BRG 077.28° / 10.54 NM SQQ
ODASA (IAF)	56 07.72N 023 24.76E	BRG 350.12° / 13.68 NM SQQ
SQQ TACAN (IAF)	55 53.43N 023 24.14E	
IF	55 43.49N 023 34.36E	BRG 320.01° / 11.50 NM SQQ
FAF	55 47.93N 023 29.81E	BRG 320.01° / 6.37 NM SQQ
MAPt	55 52.04N 023 25.58E	BRG 320.01° / 1.61 NM SQQ
THR RWY 32R	55 52.85N 023 24.64E	
Final approach descent angle: 3.00°		