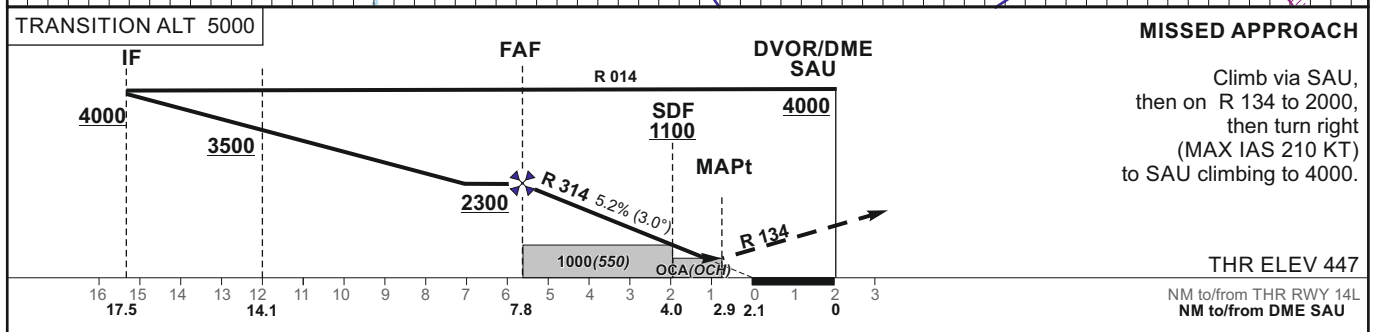
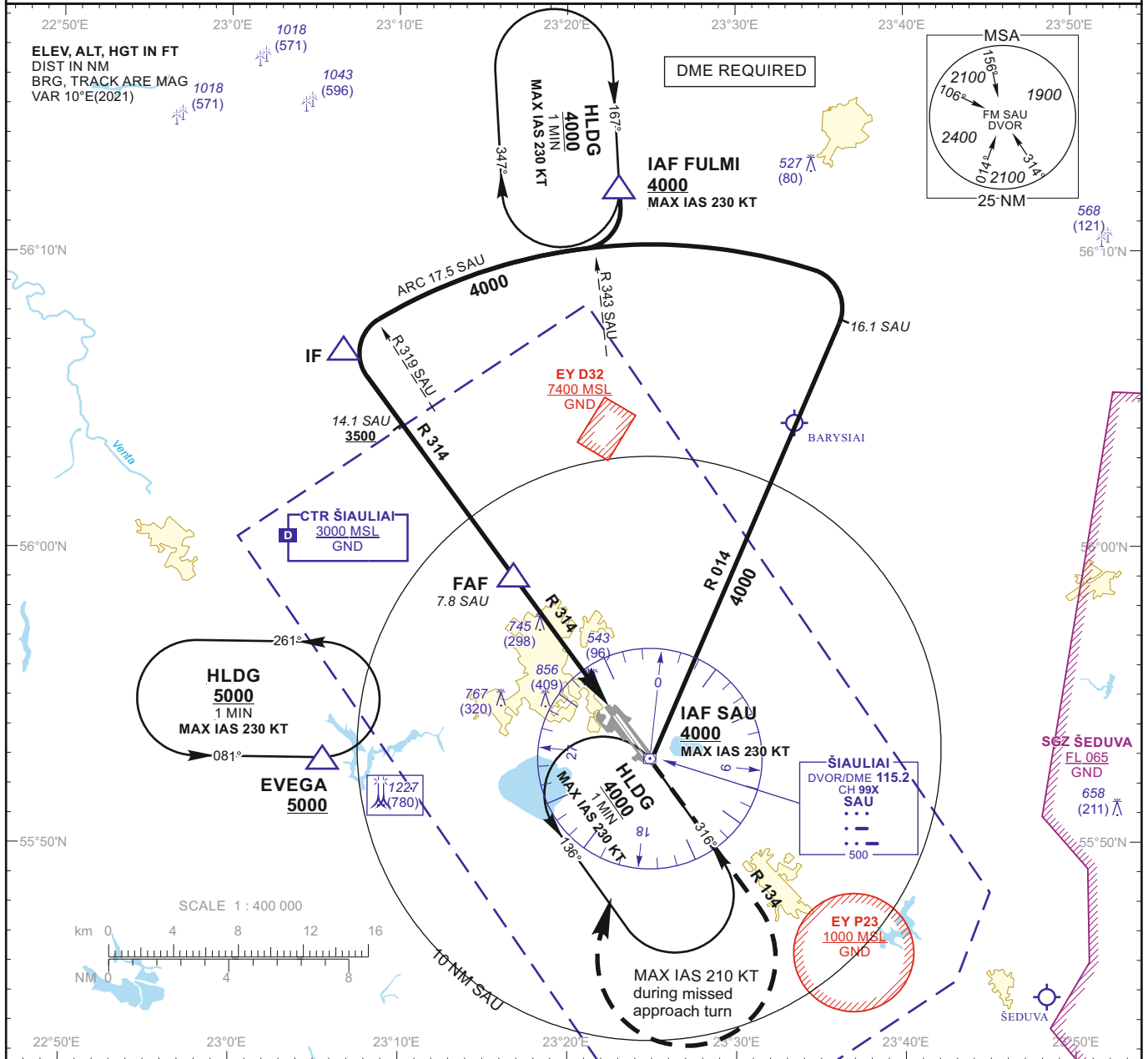


INSTRUMENT APPROACH CHART - ICAO

AERODROME ELEV 447
 HEIGHTS RELATED TO
 THR RWY 14L - ELEV 447

TWR 120.405
 ATIS 120.755

**ŠIAULIAI (EYSA)
 VOR RWY 14L
 (CAT A/B/C/D)**



| OCA(OCH) | A | B | C | D | DIST DME SAU | 7 | 6 | 5 | 4 | | | |
|-----------------------------|------------|------------|------------|---|---|---------|--------|-------|-------|------|------|------|
| STRAIGHT-IN APPROACH | 840 (390) | | | | Altitude | 2050 | 1740 | 1420 | 1110 | | | |
| VOR | 1000 (550) | | | | Height | (1603) | (1293) | (973) | (653) | | | |
| VOR (when SDF not received) | 1000 (550) | | | | Timing not authorized for defining the MAPt | | | | | | | |
| CIRCLING | 880 (440) | 1160 (710) | 1260 (810) | | GS | Kts | 80 | 100 | 120 | 140 | 160 | 180 |
| | | | | | FAF - MAPt 4.9 NM | min:sec | 3:40 | 2:56 | 2:27 | 2:06 | 1:50 | 1:38 |
| | | | | | Rate of descent (5.2%) | ft/min | 415 | 520 | 625 | 730 | 835 | 940 |

For data tabulation see verso

Changes:

INSTRUMENT
APPROACH
CHART - ICAO

AERODROME ELEV 447
HEIGHTS RELATED TO
THR RWY 14L - ELEV 447

TWR 120.405
ATIS 120.755

ŠIAULIAI (EYSA)
VOR RWY 14L
(CAT A/B/C/D)

TABULAR DESCRIPTION

| VOR INSTRUMENT APPROACH from IAFs (SAU, FULMI) | | |
|--|----------------------------|----------------------------|
| FIX/POINTS | COORDINATES | FIX FORMATION |
| EVEGA (HLDG) | 55 52 52.4N 023 05 27.0E | BRG 080.98° / 11.00 NM SAU |
| FULMI (IAF) | 56 12 11.0N 023 23 06.0E | BRG 167.08° / 19.51 NM SAU |
| SAU (IAF) | 55 52 44.6N 023 24 59.0E | |
| IF | 56 06 52.1N 023 06 38.0E | BRG 134.24° / 17.50 NM SAU |
| FAF | 55 59 02.5N 023 16 49.9E | BRG 134.24° / 7.80 NM SAU |
| SDF | 55 55 58.5N 023 20 48.5E | BRG 134.24° / 4.00 NM SAU |
| MAPt | 55 55 04.2N 023 21 58.8E | BRG 134.24° / 2.88 NM SAU |
| THR RWY 14L | 55 54 24.88N 023 22 45.78E | |
| Final approach descent angle: 3.00° | | |