

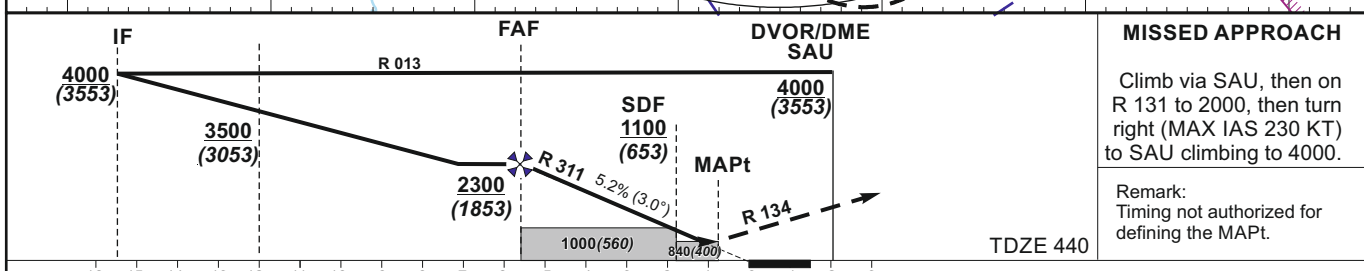
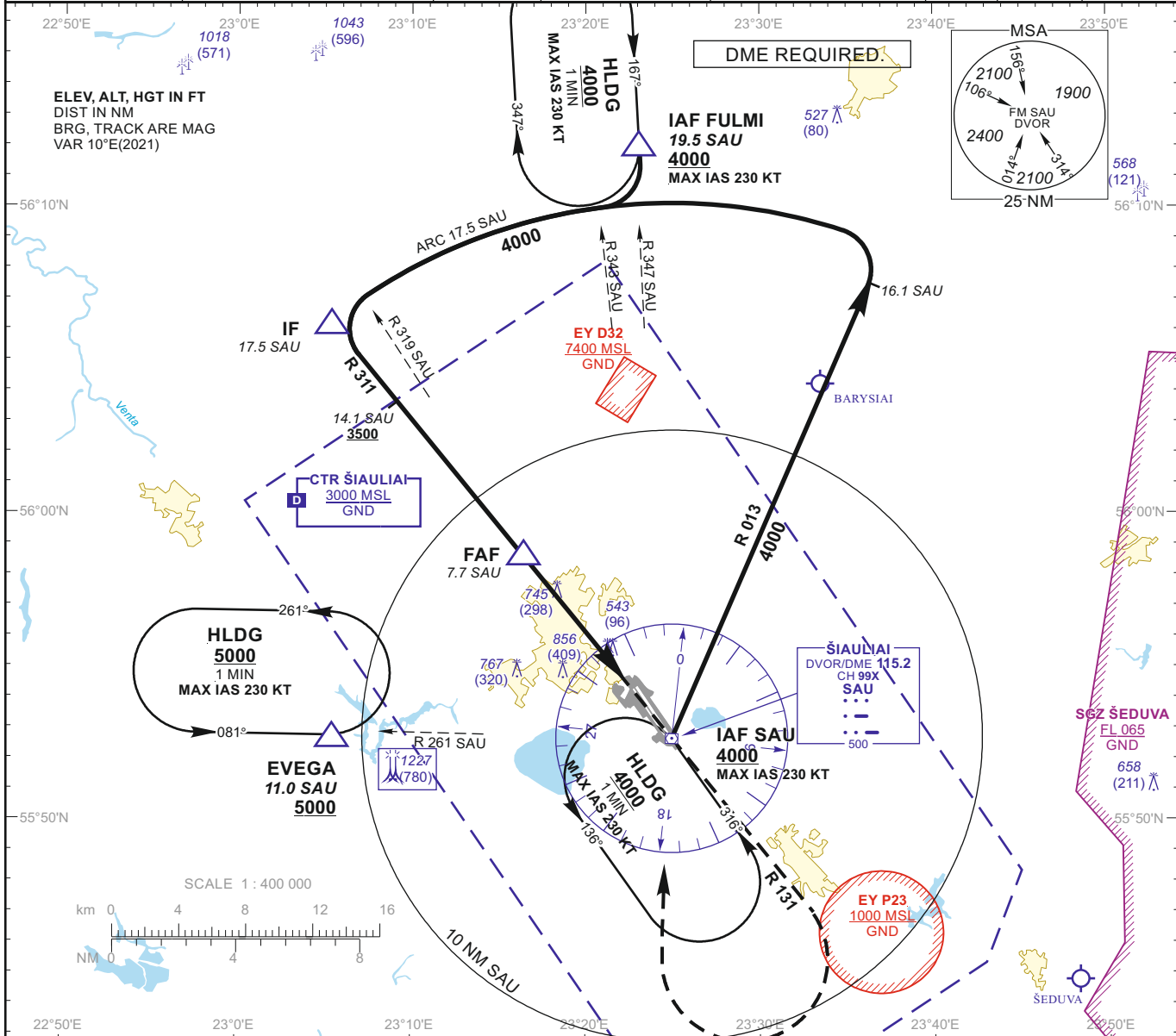
INSTRUMENT APPROACH CHART
 for MILITARY ACFT
 TRANSITION LEVEL By ATC
 TRANSITION ALT **5000(4553)**

AERODROME ELEV 447
 HEIGHTS RELATED TO AD ELEV
 THR RWY 14R ELEV 440

TWR 120.405
 ATIS 120.755

**ŠIAULIAI (EYSA)
 VOR
 RWY 14R (MIL)**

DVOR/DME SAU CH99X	APP COURSE 131°	FAF ALT 2300	Descent GP 5.2% (3.00°)	MDA 840	TDZE 440	ALS OUT	LDA 10643
-----------------------	--------------------	-----------------	----------------------------	---------	-------------	------------	--------------



GS	Kts	80	100	120	140	160	180	DIST SAU	7	6	5	4
FAF - MAPt 4.9 NM	min:sec	3:40	2:56	2:27	2:06	1:50	1:38	Altitude	2080	1770	1450	1140
Rate of descent (5.2%)	ft/min	415	520	625	730	835	940	Height	(1633)	(1323)	(1003)	(693)

	STRAIGHT-IN APPROACH						CIRCLING APPROACH		
	VOR			VOR (When SDF not received)			MDA(H)	Visibility	
	MDA(H)	Full	ALS out	MDA(H)	Full	ALS out			
A	840 (400)	RVR 1100m	RVR 1500m	1000 (560)	RVR 2000m	RVR 2700m	880 (440)	1500m	A
B							1160 (710)	2400m	B
C							1260 (810)	3600m	C
D							1260 (810)	3600m	D
E							1350 (910)	4300m	E

Changes:

INSTRUMENT APPROACH CHART
for MILITARY ACFT
TRANSITION LEVEL By ATC
TRANSITION ALT **5000(4553)**

AERODROME ELEV 447
HEIGHTS RELATED TO AD ELEV
THR RWY 14R ELEV 440

TWR 120.405
ATIS 120.755

ŠIAULIAI (EYSA)
VOR
RWY 14R (MIL)

TABULAR DESCRIPTION

VOR INSTRUMENT APPROACH for MILITARY ACFT from IAFs (SAU, FULMI)		
FIX/POINTS	COORDINATES	FIX FORMATION
EVEGA (HLDG)	55 52.87N 023 05.45E	BRG 080.98° / 11.00 NM SAU
FULMI (IAF)	56 12.18N 023 23.10E	BRG 167.08° / 19.51 NM SAU
SAU (IAF)	55 52.74N 023 24.98E	
IF	56 06.34N 023 05.41E	BRG 131.42° / 17.50 NM SAU
FAF	55 58.75N 023 16.38E	BRG 131.42° / 7.72 NM SAU
SDF	55 55.79N 023 20.62E	BRG 131.42° / 3.92 NM SAU
MAPt	55 54.90N 023 21.90E	BRG 131.42° / 2.77 NM SAU
THR RWY 14R	55 54.25N 023 22.68E	
Final approach descent angle: 3.00°		