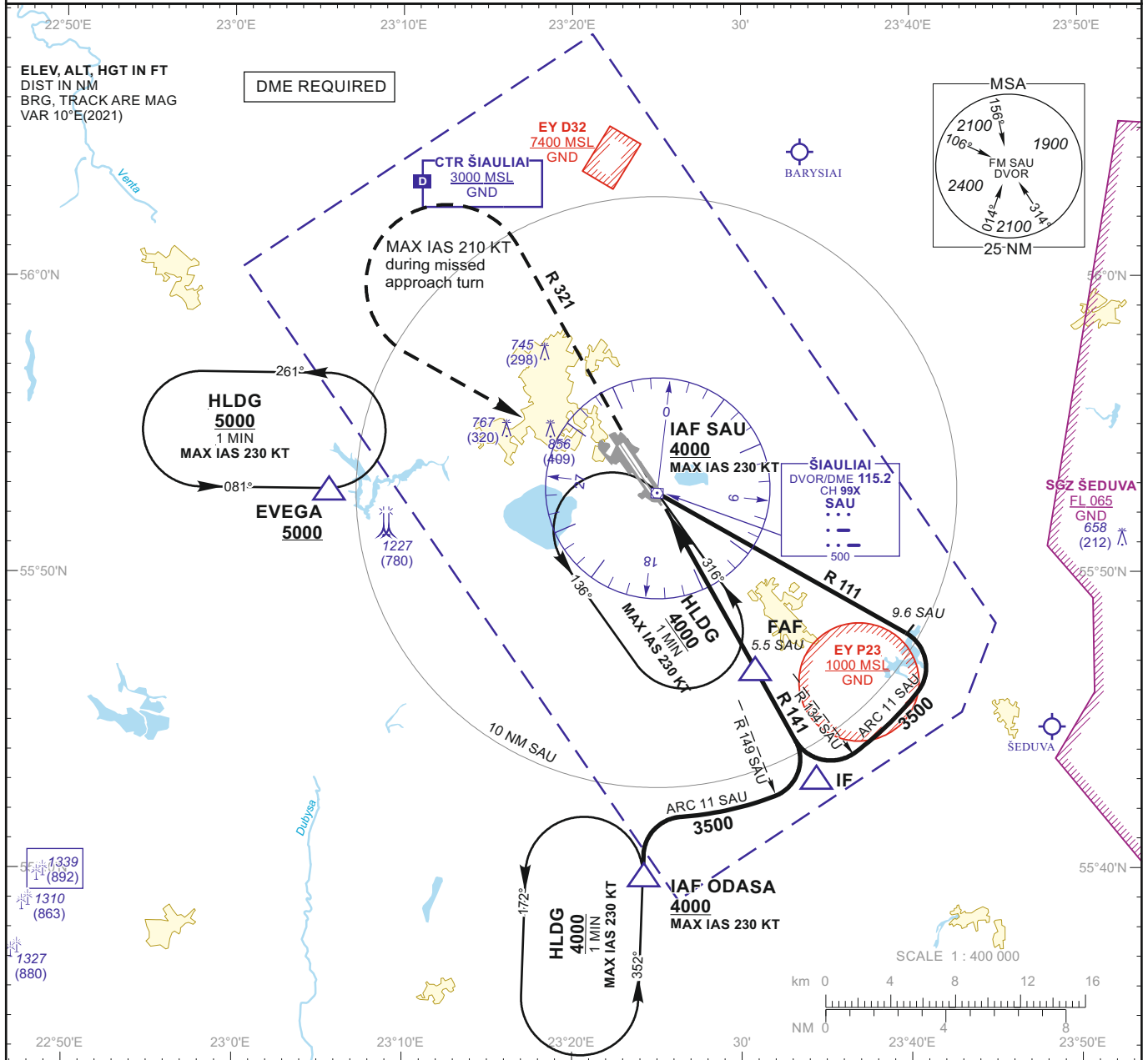


**INSTRUMENT
APPROACH
CHART - ICAO**

AERODROME ELEV 447
HEIGHTS RELATED TO AD ELEV
THR RWY 32R - ELEV 441

TWR 120.405
ATIS 120.755

**ŠIAULIAI (EYSA)
VOR RWY 32R
(CAT A/B/C/D)**

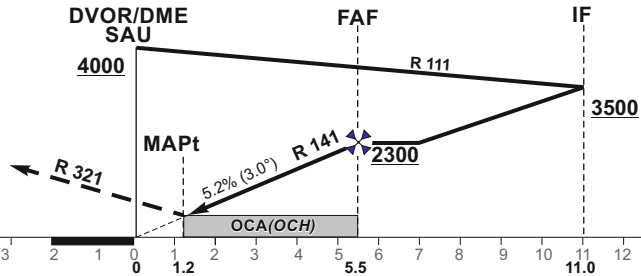


MISSED APPROACH

Climb via SAU, then on R 321 to 2200, then turn left (MAX IAS 210 KT) to SAU climbing to 4000.

THR ELEV 441

TRANSITION ALT 5000



NM to/from THR RWY 32R
NM to/from DME SAU

OCA(OCH)	A	B	C	D	DIST DME SAU	5	4	3	2			
STRAIGHT-IN APPROACH	930 (480)				Altitude	2130	1820	1500	1190			
					Height	(1683)	(1373)	(1053)	(743)			
CIRCLING	880 (440)	1160 (710)	1260 (810)		Timing not authorized for defining the MAPt							
	GS					Kts	80	100	120	140	160	180
	FAF - MAPt 4.4 NM					min:sec	3:16	2:37	2:11	1:52	1:38	1:27
	Rate of descent (5.2%)					ft/min	415	520	625	730	835	940

For data tabulation see verso

Changes:

INSTRUMENT
APPROACH
CHART - ICAO

AERODROME ELEV 447
HEIGHTS RELATED TO AD ELEV
THR RWY 32R - ELEV 441

TWR 120.405
ATIS 120.755

ŠIAULIAI (EYSA)
VOR RWY 32R
(CAT A/B/C/D)

TABULAR DESCRIPTION

VOR INSTRUMENT APPROACH from IAFs (SAU, ODASA)		
FIX/POINTS	COORDINATES	FIX FORMATION
EVEGA (HLDG)	55 52 52.4N 023 05 27.0E	BRG 080.98° / 11.00 NM SAU
ODASA (IAF)	55 39 46.4N 023 24 09.9E	BRG 352.21° / 13.00 NM SAU
SAU (IAF)	55 52 44.6N 023 24 59.0E	
IF	55 43 07.3N 023 34 22.9E	BRG 321.29° / 11.00 NM SAU
FAF	55 47 54.2N 023 29 43.4E	BRG 321.29° / 5.54 NM SAU
MAPt	55 51 42.3N 023 26 00.1E	BRG 321.29° / 1.19 NM SAU
THR RWY 32R	55 52 50.94N 023 24 38.15E	
Final approach descent angle: 3.00°		