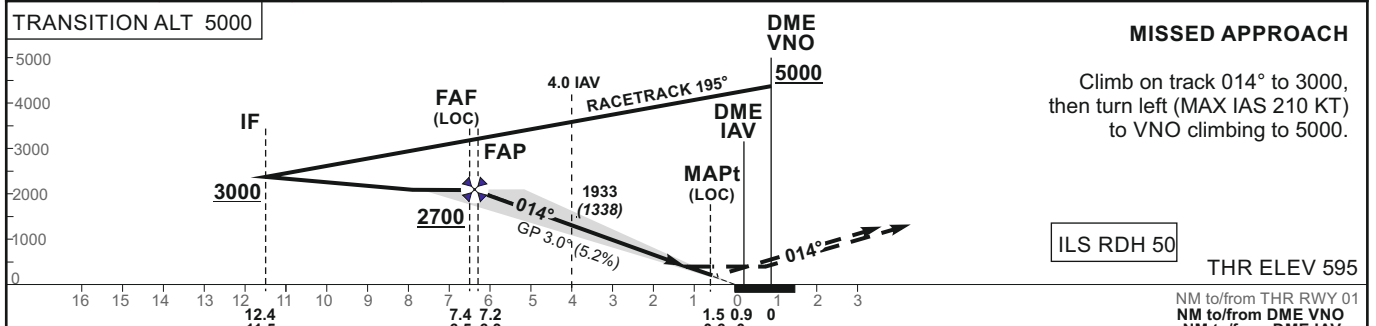
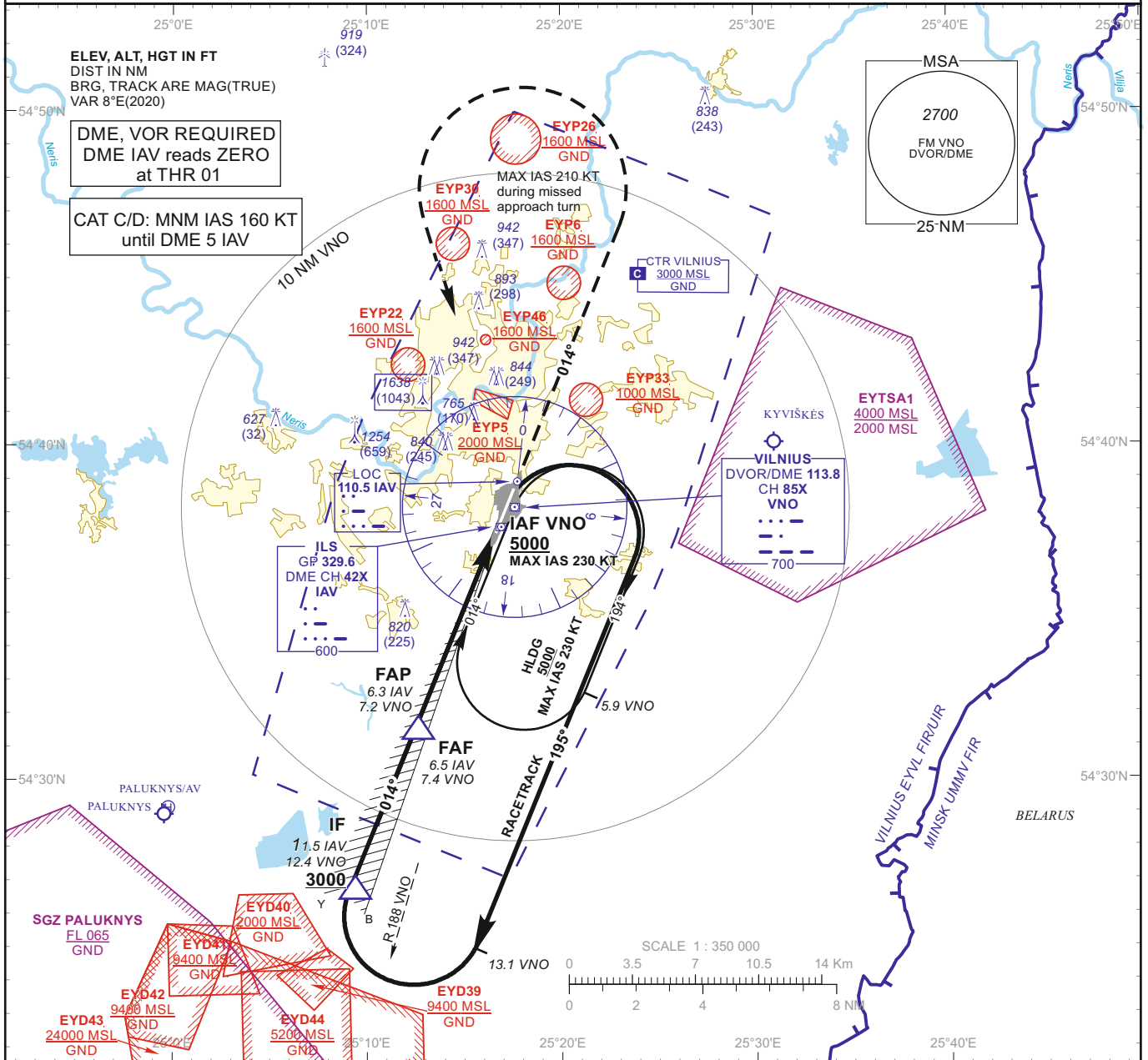


**INSTRUMENT APPROACH CHART - ICAO**

**AERODROME ELEV 649**  
HEIGHTS RELATED TO THR RWY 01 - ELEV 595

APP 120.705  
TWR 118.205  
ATIS 125.805

**VILNIUS (EYVI)**  
ILS CAT II Y or LOC RWY 01  
(CAT A/B/C/D)



OCA(OCH)		A B C D				DIST DME IAV	MISSED APPROACH						
		A	B	C	D		6	5	4	3	2		
STRAIGHT-IN APPROACH	ILS CAT II	746 (151)	764 (169)	775 (180)	790 (195)	Altitude	2590	2260	1940	1610	1290		
	ILS CAT I	844 (249)	856 (261)	865 (270)	875 (280)	Height	(1995)	(1665)	(1345)	(1015)	(695)		
	LOC	980 (380)				LOC : timing not authorized for defining the MAPt							
CIRCLING	NOT AUTHORIZED	GS					Kts	80	100	120	140	160	180
		FAF - MAPt 5.9 NM					min:sec	4:25	3:32	2:57	2:32	2:13	1:58
		Rate of descent (5.2%)					ft/min	415	520	625	730	835	940

For data tabulation see verso

Changes: EYP45 withdrawn; EYP46 added; ALT FM DME IAV.

**INSTRUMENT  
APPROACH  
CHART - ICAO**

**AERODROME ELEV 649**  
HEIGHTS RELATED TO  
THR RWY 01 - ELEV 595

**VILNIUS (EYVI)  
ILS CAT II Y or LOC RWY 01  
(CAT A/B/C/D)**

**TABULAR DESCRIPTION**

ILS or LOC INSTRUMENT APPROACH from IAF (VNO)		
FIX/POINTS	COORDINATES	FIX FORMATION
VNO (IAF)	54 38 09.8N 025 17 37.1E	
IF	54 26 45.4N 025 09 21.6E	BRG 014.63° / 12.40 NM VNO ; BRG 013.66° / 11.51 NM IAV
FAF	54 31 23.5N 025 12 32.8E	BRG 015.30° / 7.40 NM VNO ; BRG 013.66° / 6.51 NM IAV
FAP	54 31 32.7N 025 12 39.1E	BRG 015.33° / 7.23 NM VNO ; BRG 013.66° / 6.34 NM IAV
MAPt	54 36 51.9N 025 16 19.6E	BRG 021.76° / 1.50 NM VNO ; BRG 013.66° / 0.60 NM IAV
THR RWY 01	54 37 25.27N 025 16 42.70E	
LOC IAV	54 38 55.0N 025 17 44.9E	
DME IAV	54 37 33.7N 025 16 55.8E	
Final approach (LOC) descent angle: 3.00°		